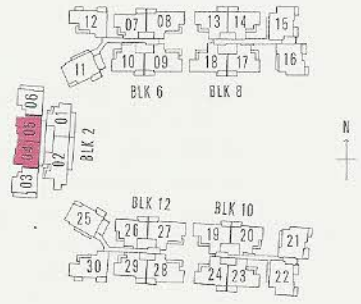


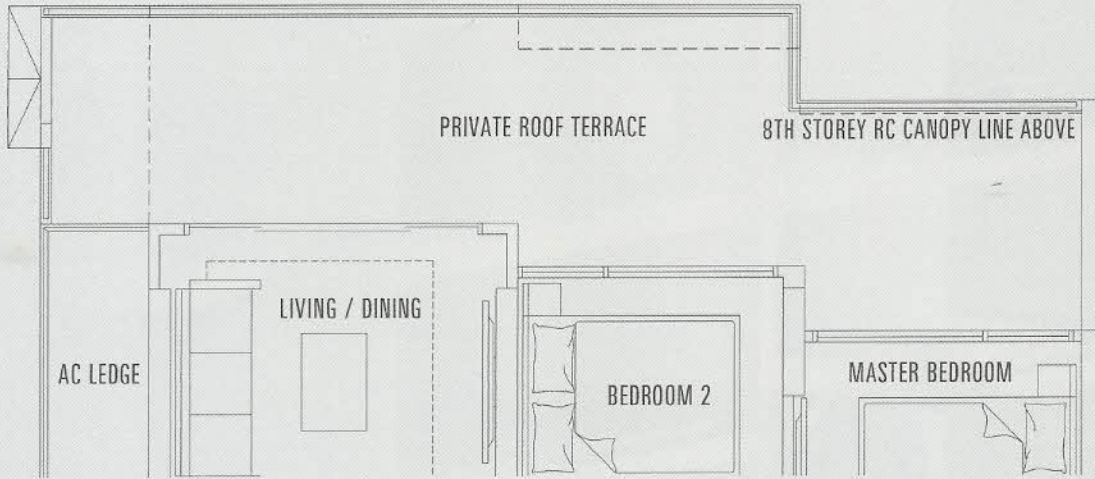
TYPICAL FLOOR PLAN OF UNIT 2A



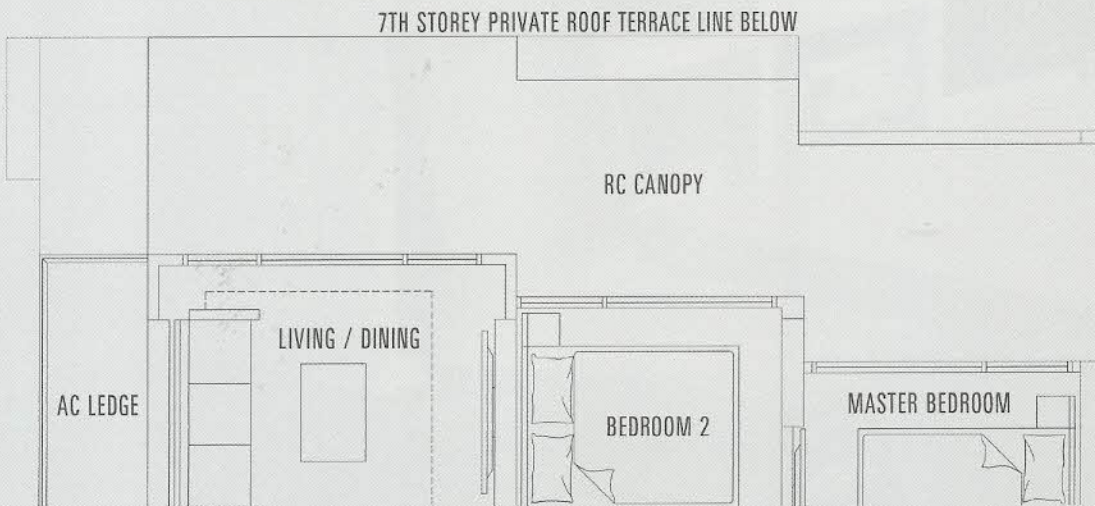
UNIT 2A  
69SQM / 743SQFT

BLOCK 2  
#09-04 to #20-04  
#09-05 to #20-05 (MIRROR)





PART FLOOR PLAN OF UNIT 2A P



PART FLOOR PLAN OF UNIT 2A a

THE ABOVE PLANS AND ILLUSTRATIONS ARE SUBJECT TO CHANGES AS MAY BE REQUIRED AND APPROVED BY THE RELEVANT AUTHORITIES. THE BALCONY SHALL NOT BE ENCLOSED UNLESS WITH THE APPROVED BALCONY SCREEN. FOR AN ILLUSTRATION OF THE APPROVED BALCONY SCREEN, PLEASE REFER TO THE DIAGRAM ANNEXED HERETO AS "ANNEXURE A". THE PRIVATE ENCLOSED SPACE AND PRIVATE ROOF TERRACES SHALL NOT BE ROOF OVER UNLESS WITH THE APPROVED ROOFING DESIGN. FOR AN ILLUSTRATION OF THE APPROVED ROOFING DESIGN, PLEASE REFER TO THE DIAGRAM ANNEXED HERETO AS "ANNEXURE B".

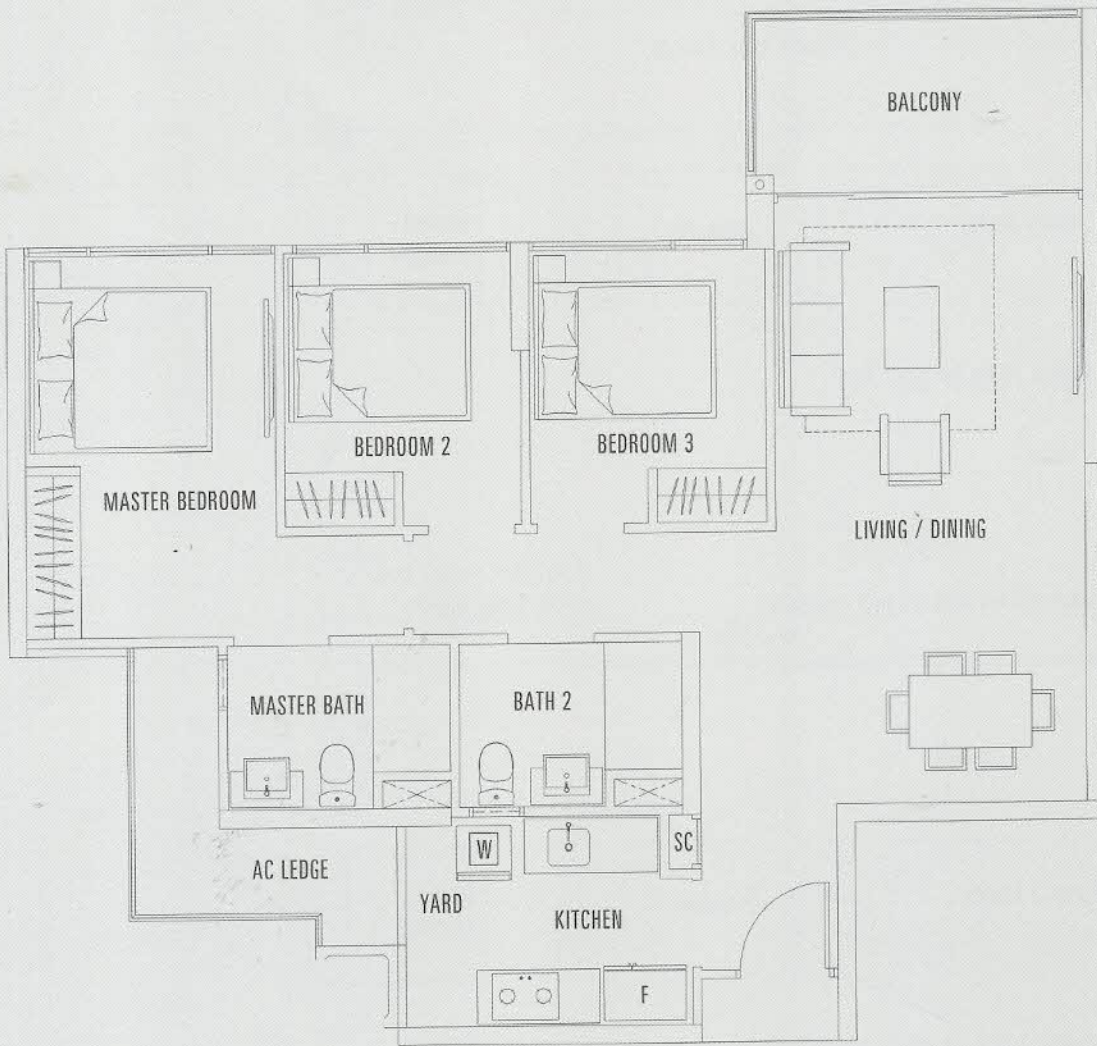
UNIT 2A P  
90SQM / 969SQFT

BLOCK 2  
#07-04  
#07-05 (MIRROR)

UNIT 2A a  
69SQM / 743SQFT

BLOCK 2  
#08-04  
#08-05 (MIRROR)

# 3 BEDROOM



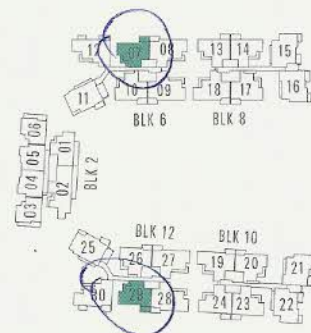
TYPICAL FLOOR PLAN OF UNIT 3A

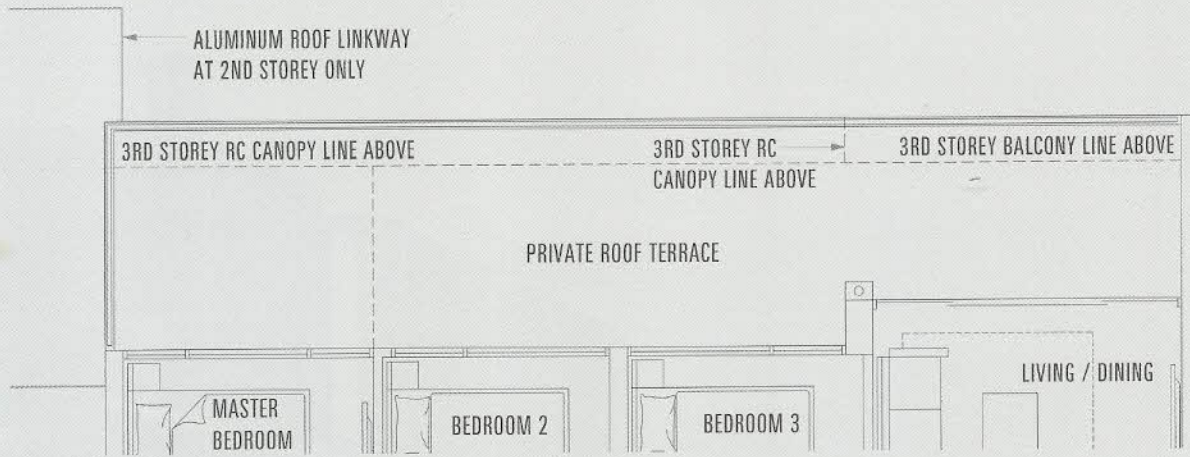


UNIT 3A  
96SQM / 1033SQFT

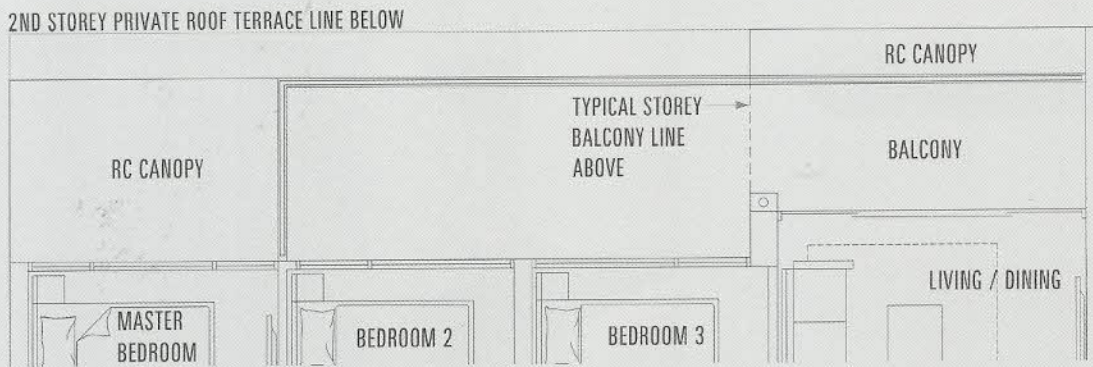
BLOCK 6  
#04-07 to #20-07

BLOCK 12  
#04-29 to #20-29 (MIRROR)





PART FLOOR PLAN OF UNIT 3A P



PART FLOOR PLAN OF UNIT 3A a

THE ABOVE PLANS AND ILLUSTRATIONS ARE SUBJECT TO CHANGES AS MAY BE REQUIRED AND APPROVED BY THE RELEVANT AUTHORITIES. THE BALCONY SHALL NOT BE ENCLOSED UNLESS WITH THE APPROVED BALCONY SCREEN. FOR AN ILLUSTRATION OF THE APPROVED BALCONY SCREEN, PLEASE REFER TO THE DIAGRAM ANNEXED HERETO AS "ANNEXURE A". THE PRIVATE ENCLOSED SPACE AND PRIVATE ROOF TERRACES SHALL NOT BE ROOF OVER UNLESS WITH THE APPROVED ROOFING DESIGN. FOR AN ILLUSTRATION OF THE APPROVED ROOFING DESIGN, PLEASE REFER TO THE DIAGRAM ANNEXED HERETO AS "ANNEXURE B".

UNIT 3A P  
116SQM / 1249SQFT

UNIT 3A a  
104SQM / 1119SQFT

BLOCK 6  
#02-07

BLOCK 12  
#02-29 (MIRROR)

BLOCK 6  
#03-07

BLOCK 12  
#03-29 (MIRROR)

