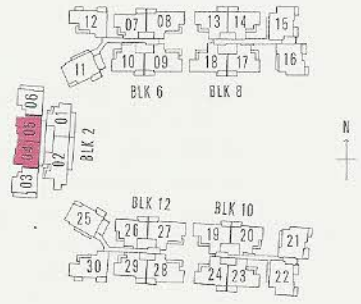


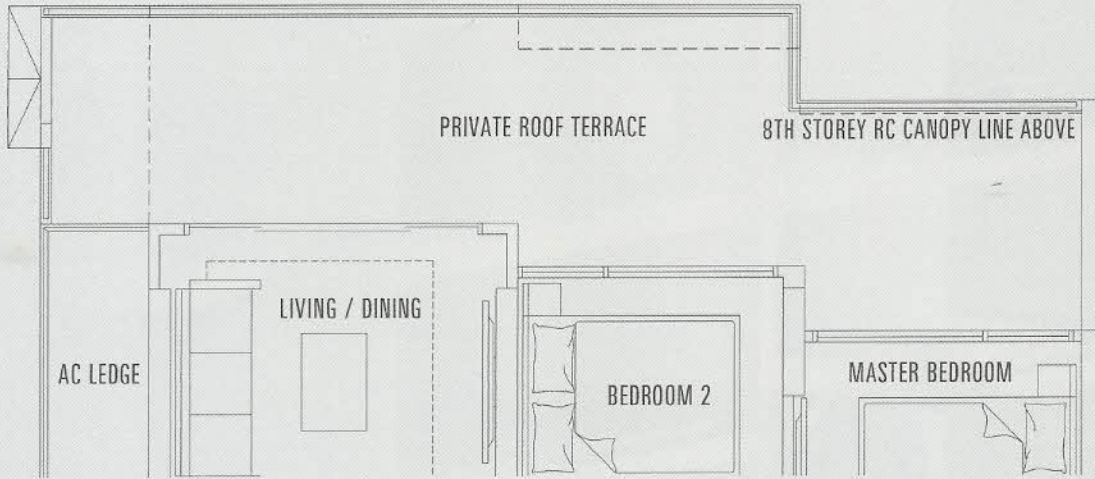
TYPICAL FLOOR PLAN OF UNIT 2A



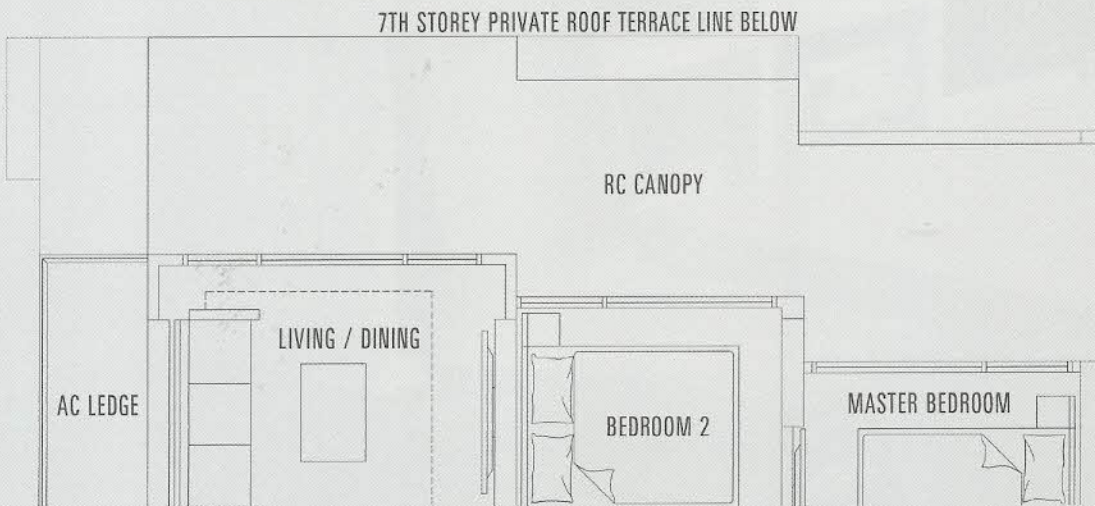
UNIT 2A  
69SQM / 743SQFT

BLOCK 2  
#09-04 to #20-04  
#09-05 to #20-05 (MIRROR)





PART FLOOR PLAN OF UNIT 2A P



PART FLOOR PLAN OF UNIT 2A a

THE ABOVE PLANS AND ILLUSTRATIONS ARE SUBJECT TO CHANGES AS MAY BE REQUIRED AND APPROVED BY THE RELEVANT AUTHORITIES. THE BALCONY SHALL NOT BE ENCLOSED UNLESS WITH THE APPROVED BALCONY SCREEN. FOR AN ILLUSTRATION OF THE APPROVED BALCONY SCREEN, PLEASE REFER TO THE DIAGRAM ANNEXED HERETO AS "ANNEXURE A". THE PRIVATE ENCLOSED SPACE AND PRIVATE ROOF TERRACES SHALL NOT BE ROOF OVER UNLESS WITH THE APPROVED ROOFING DESIGN. FOR AN ILLUSTRATION OF THE APPROVED ROOFING DESIGN, PLEASE REFER TO THE DIAGRAM ANNEXED HERETO AS "ANNEXURE B".

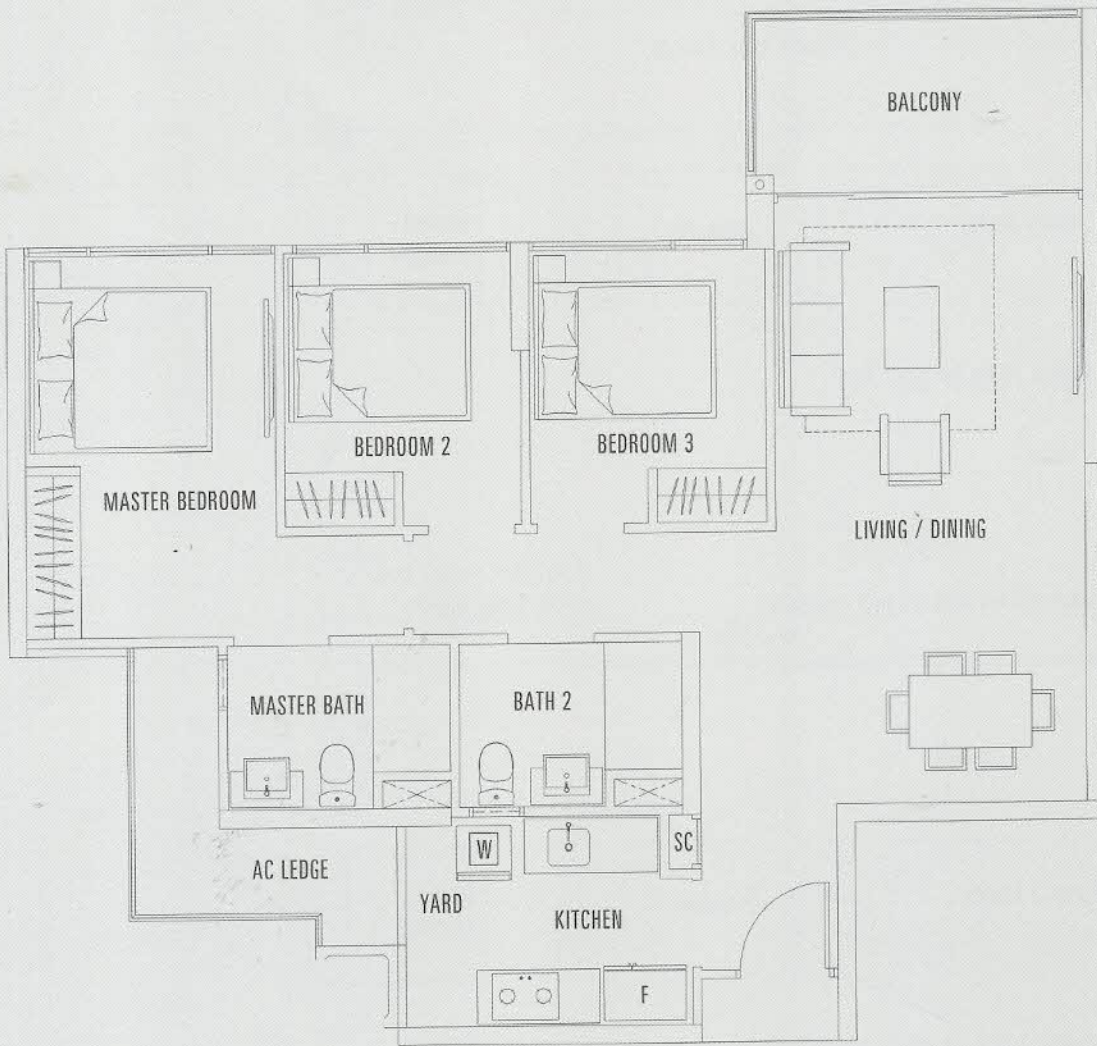
UNIT 2A P  
90SQM / 969SQFT

BLOCK 2  
#07-04  
#07-05 (MIRROR)

UNIT 2A a  
69SQM / 743SQFT

BLOCK 2  
#08-04  
#08-05 (MIRROR)

# 3 BEDROOM



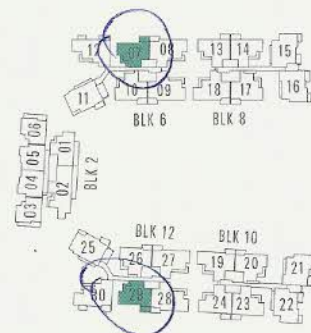
TYPICAL FLOOR PLAN OF UNIT 3A

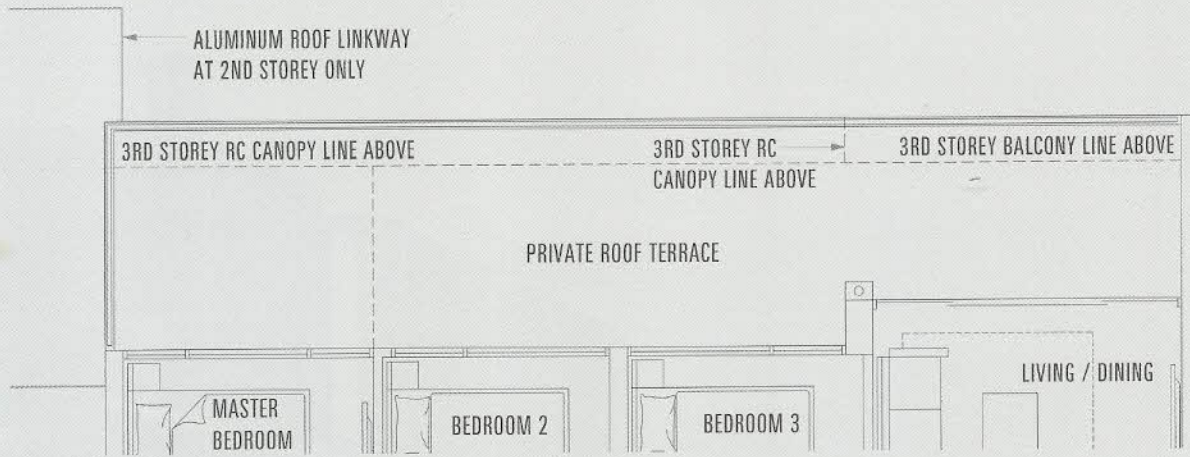


UNIT 3A  
96SQM / 1033SQFT

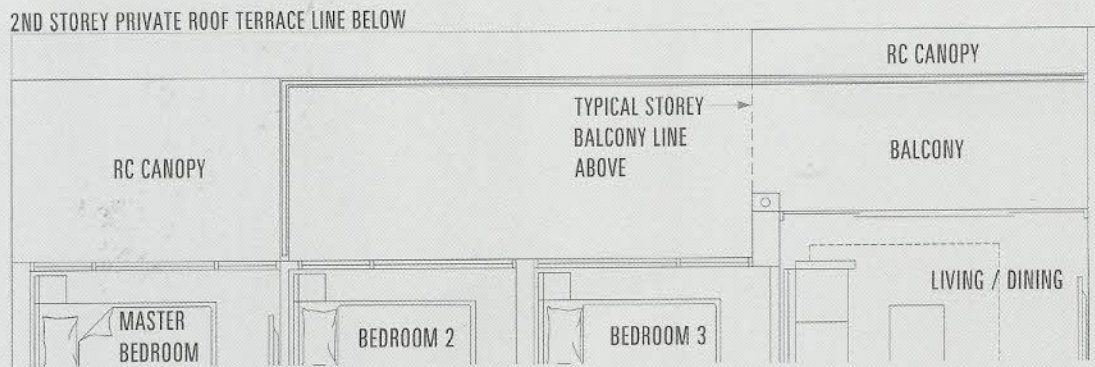
BLOCK 6  
#04-07 to #20-07

BLOCK 12  
#04-29 to #20-29 (MIRROR)





PART FLOOR PLAN OF UNIT 3A P



PART FLOOR PLAN OF UNIT 3A a

THE ABOVE PLANS AND ILLUSTRATIONS ARE SUBJECT TO CHANGES AS MAY BE REQUIRED AND APPROVED BY THE RELEVANT AUTHORITIES. THE BALCONY SHALL NOT BE ENCLOSED UNLESS WITH THE APPROVED BALCONY SCREEN. FOR AN ILLUSTRATION OF THE APPROVED BALCONY SCREEN, PLEASE REFER TO THE DIAGRAM ANNEXED HERETO AS "ANNEXURE A". THE PRIVATE ENCLOSED SPACE AND PRIVATE ROOF TERRACES SHALL NOT BE ROOF OVER UNLESS WITH THE APPROVED ROOFING DESIGN. FOR AN ILLUSTRATION OF THE APPROVED ROOFING DESIGN, PLEASE REFER TO THE DIAGRAM ANNEXED HERETO AS "ANNEXURE B".

UNIT 3A P  
116SQM / 1249SQFT

UNIT 3A a  
104SQM / 1119SQFT

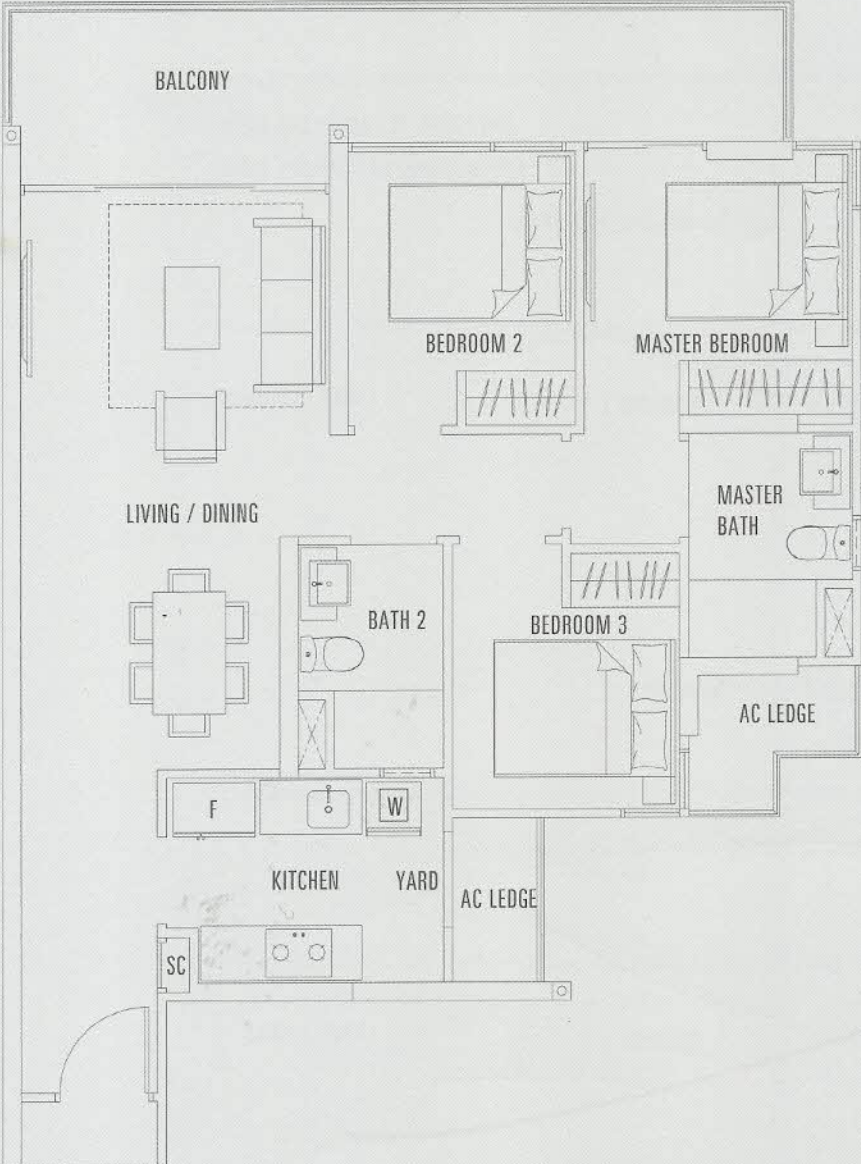
BLOCK 6  
#02-07

BLOCK 12  
#02-29 (MIRROR)

BLOCK 6  
#03-07

BLOCK 12  
#03-29 (MIRROR)

3 BEDROOM

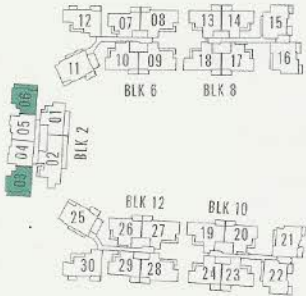


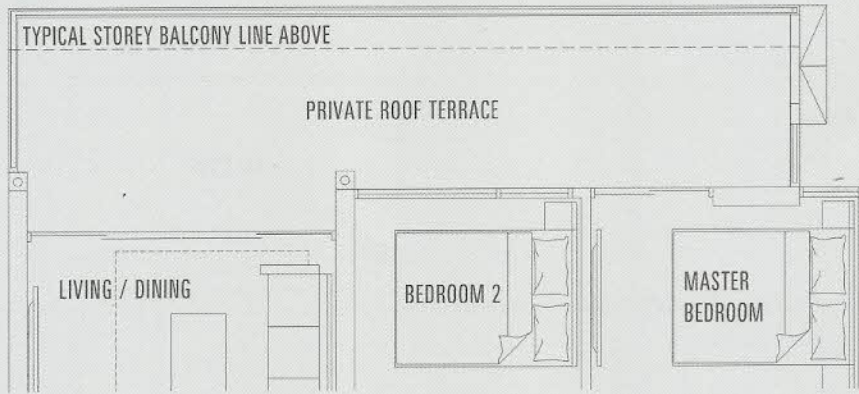
TYPICAL FLOOR PLAN OF UNIT 3B



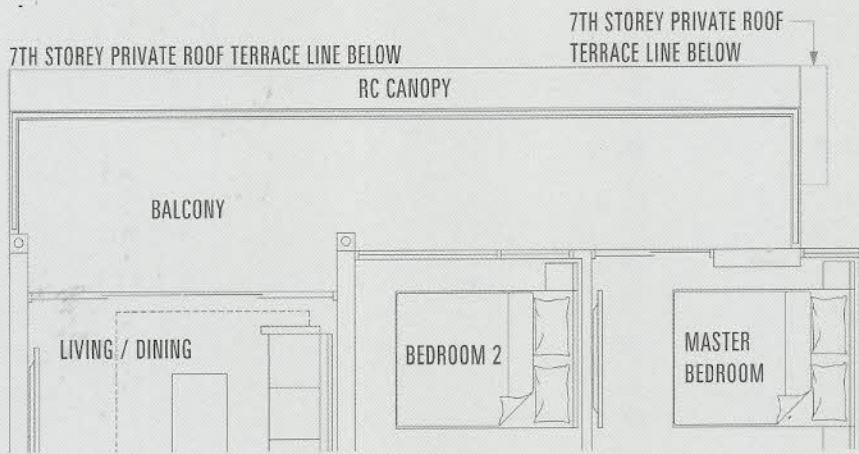
UNIT 3B  
95SQM / 1023SQFT

BLOCK 2  
#09-03 to #20-03  
#09-06 to #20-06 (MIRROR)





PART FLOOR PLAN OF UNIT 3B P



PART FLOOR PLAN OF UNIT 3B a

THE ABOVE PLANS AND ILLUSTRATIONS ARE SUBJECT TO CHANGES AS MAY BE REQUIRED AND APPROVED BY THE RELEVANT AUTHORITIES. THE BALCONY SHALL NOT BE ENCLOSED UNLESS WITH THE APPROVED BALCONY SCREEN. FOR AN ILLUSTRATION OF THE APPROVED BALCONY SCREEN, PLEASE REFER TO THE DIAGRAM ANNEXED HERETO AS "ANNEXURE A". THE PRIVATE ENCLOSED SPACE AND PRIVATE ROOF TERRACES SHALL NOT BE ROOF OVER UNLESS WITH THE APPROVED ROOFING DESIGN. FOR AN ILLUSTRATION OF THE APPROVED ROOFING DESIGN, PLEASE REFER TO THE DIAGRAM ANNEXED HERETO AS "ANNEXURE B".

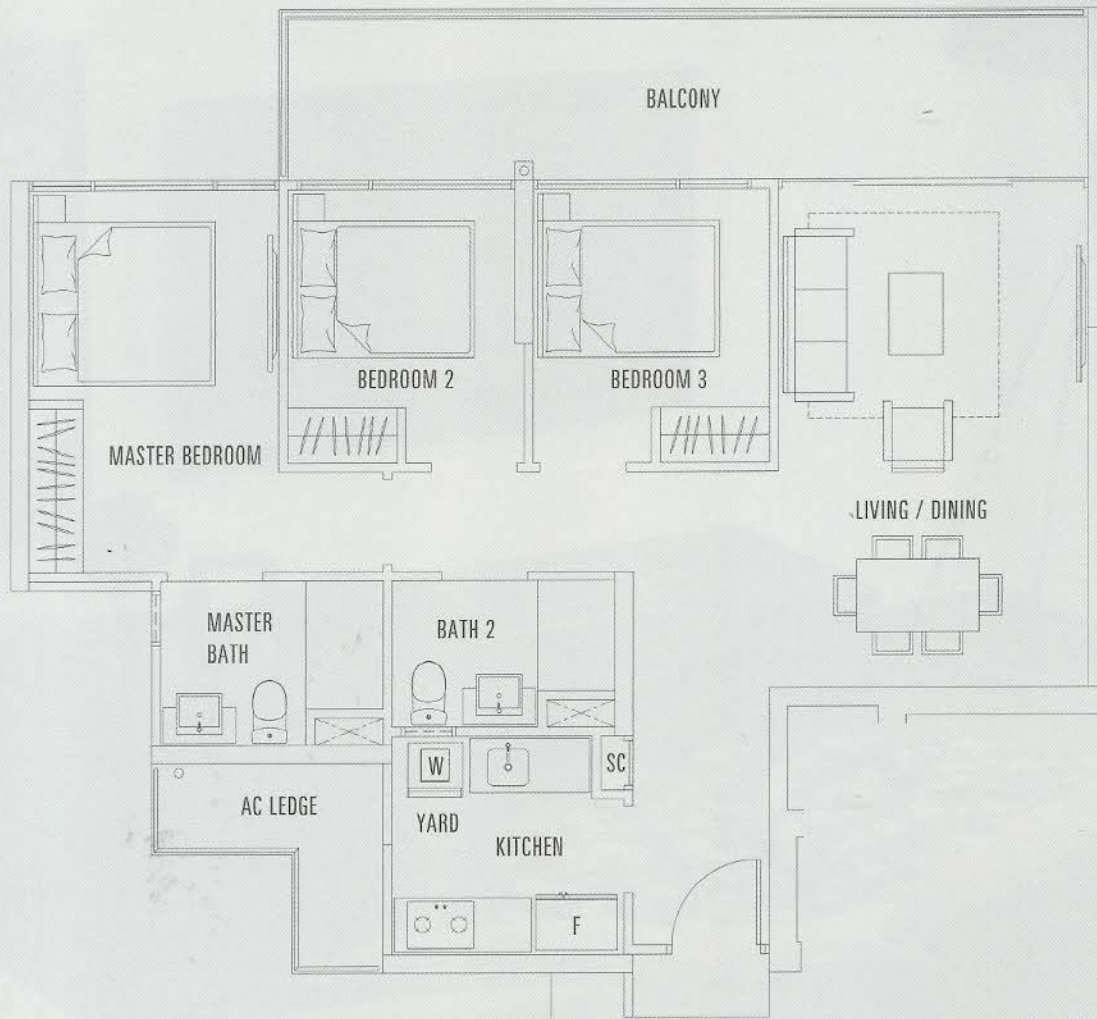
UNIT 3B P  
99SQM / 1066SQFT

UNIT 3B a  
95SQM / 1023SQFT

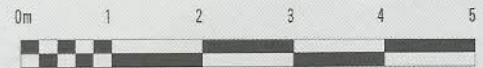
BLOCK 2  
#07-03  
#07-06 (MIRROR)

BLOCK 2  
#08-03  
#08-06 (MIRROR)

# 3 BEDROOM

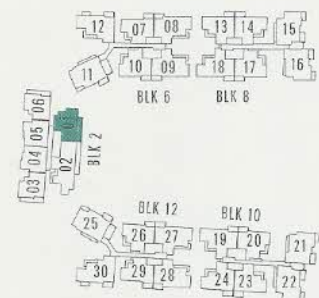


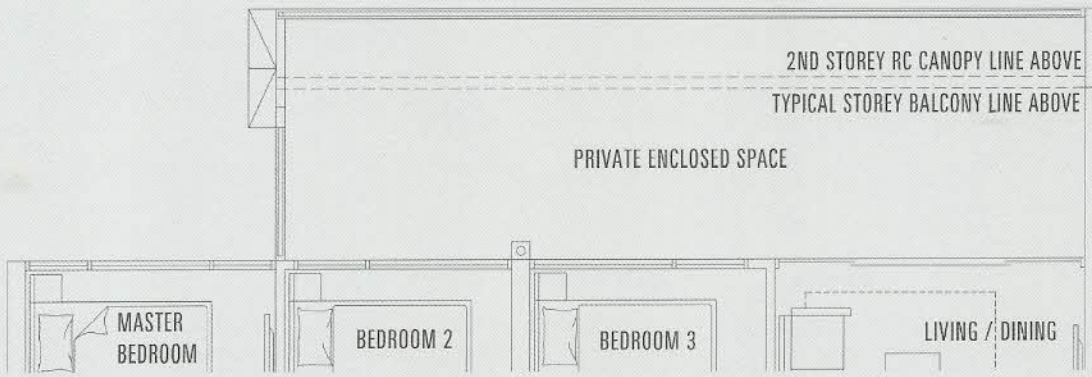
TYPICAL FLOOR PLAN OF UNIT 3C



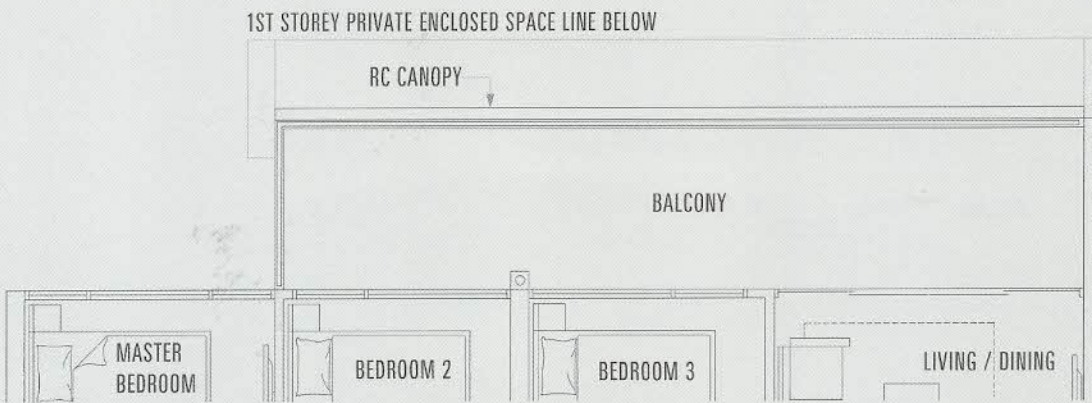
TYPE 3C  
100SQM / 1076SQFT

BLOCK 2  
#03-01 to #19-01





PART FLOOR PLAN OF UNIT 3C P



PART FLOOR PLAN OF UNIT 3C a

THE ABOVE PLANS AND ILLUSTRATIONS ARE SUBJECT TO CHANGES AS MAY BE REQUIRED AND APPROVED BY THE RELEVANT AUTHORITIES. THE BALCONY SHALL NOT BE ENCLOSED UNLESS WITH THE APPROVED BALCONY SCREEN. FOR AN ILLUSTRATION OF THE APPROVED BALCONY SCREEN, PLEASE REFER TO THE DIAGRAM ANNEXED HERETO AS "ANNEXURE A". THE PRIVATE ENCLOSED SPACE AND PRIVATE ROOF TERRACES SHALL NOT BE ROOF OVER UNLESS WITH THE APPROVED ROOFING DESIGN. FOR AN ILLUSTRATION OF THE APPROVED ROOFING DESIGN, PLEASE REFER TO THE DIAGRAM ANNEXED HERETO AS "ANNEXURE B".

TYPE 3C P  
108SQM / 1163SQFT

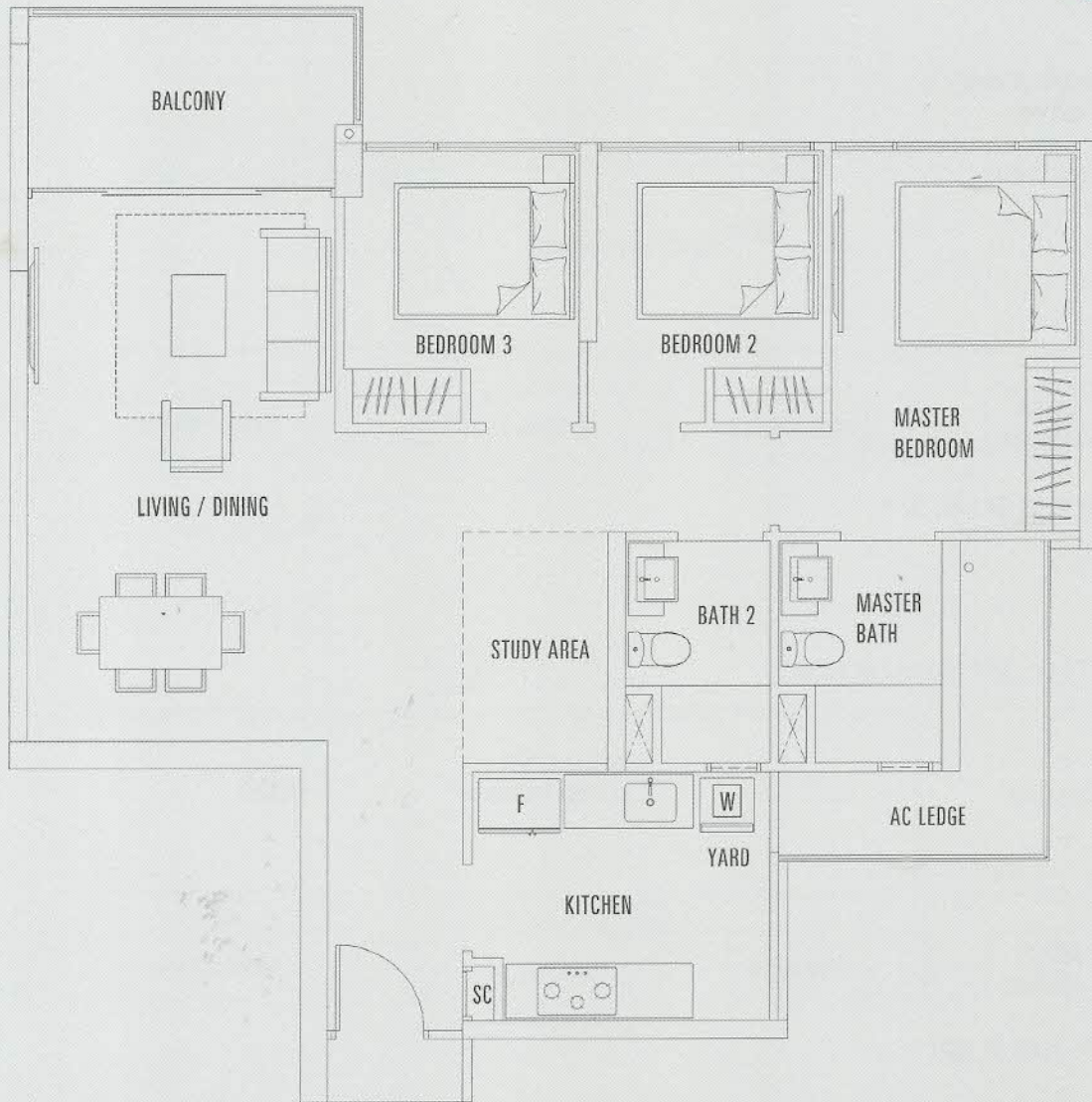
BLOCK 2  
#01-01

TYPE 3C a  
100SQM / 1076SQFT

BLOCK 2  
#02-01



# 3 BEDROOM PREMIUM



TYPICAL FLOOR PLAN OF UNIT 3D



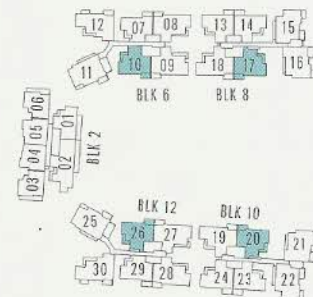
TYPE 3D  
104SQM / 1119SQFT

BLOCK 6  
#03-10 to #20-10

BLOCK 8  
#03-17 to #18-17 (MIRROR)

BLOCK 10  
#03-20 to #18-20

BLOCK 12  
#03-26 to #20-26(MIRROR)





PART FLOOR PLAN OF UNIT 3D P



PART FLOOR PLAN OF UNIT 3D a

THE ABOVE PLANS AND ILLUSTRATIONS ARE SUBJECT TO CHANGES AS MAY BE REQUIRED AND APPROVED BY THE RELEVANT AUTHORITIES. THE BALCONY SHALL NOT BE ENCLOSED UNLESS WITH THE APPROVED BALCONY SCREEN. FOR AN ILLUSTRATION OF THE APPROVED BALCONY SCREEN, PLEASE REFER TO THE DIAGRAM ANNEXED HERETO AS "ANNEXURE A". THE PRIVATE ENCLOSED SPACE AND PRIVATE ROOF TERRACES SHALL NOT BE ROOF OVER UNLESS WITH THE APPROVED ROOFING DESIGN. FOR AN ILLUSTRATION OF THE APPROVED ROOFING DESIGN, PLEASE REFER TO THE DIAGRAM ANNEXED HERETO AS "ANNEXURE B".

UNIT 3D P  
123SQM / 1324SQFT

TYPE 3D a  
112SQM / 1206SQFT

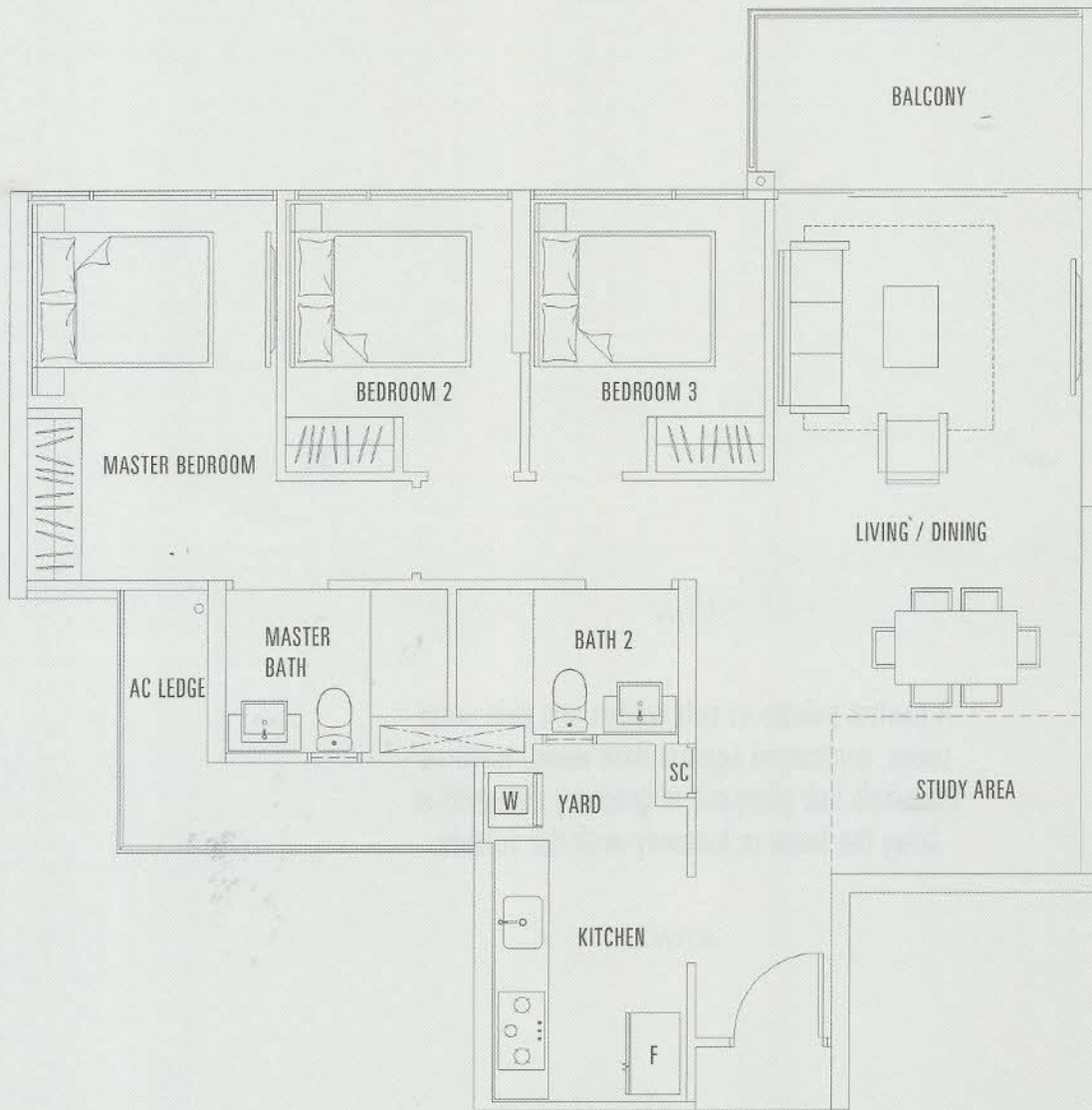
BLOCK 6                      BLOCK 10  
#01-10                      #01-20

BLOCK 6                      BLOCK 10  
#02-10                      #02-20

BLOCK 8                      BLOCK 12  
#01-17 (MIRROR)        #01-26 (MIRROR)

BLOCK 8                      BLOCK 12  
#02-17 (MIRROR)        #02-26 (MIRROR)

# 3 BEDROOM PREMIUM



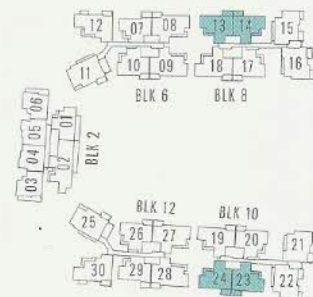
TYPICAL FLOOR PLAN OF UNIT 3E



TYPE 3E  
101SQM / 1087SQFT

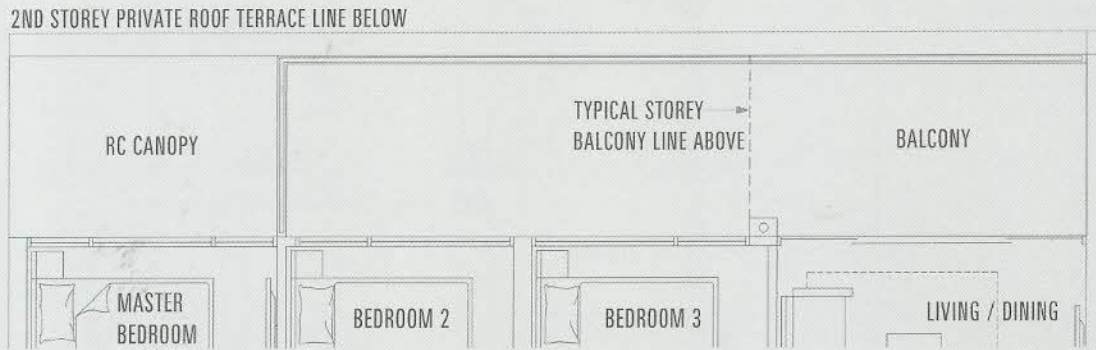
BLOCK 8  
#04-13 to #18-13  
#04-14 to #18-14 (MIRROR)

BLOCK 10  
#04-23 to #18-23  
#04-24 to #18-24 (MIRROR)





PART FLOOR PLAN OF UNIT 3E P



PART FLOOR PLAN OF UNIT 3E a

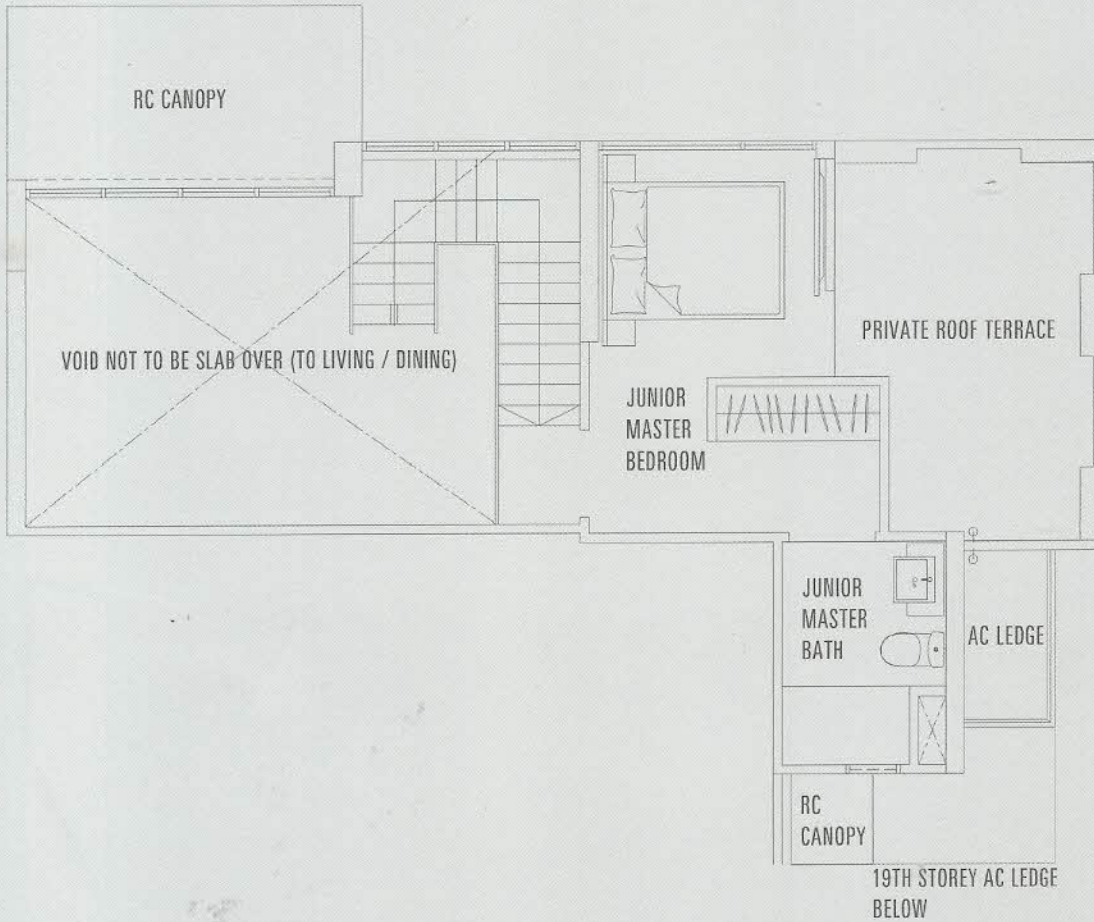
THE ABOVE PLANS AND ILLUSTRATIONS ARE SUBJECT TO CHANGES AS MAY BE REQUIRED AND APPROVED BY THE RELEVANT AUTHORITIES. THE BALCONY SHALL NOT BE ENCLOSED UNLESS WITH THE APPROVED BALCONY SCREEN. FOR AN ILLUSTRATION OF THE APPROVED BALCONY SCREEN, PLEASE REFER TO THE DIAGRAM ANNEXED HERETO AS "ANNEXURE A". THE PRIVATE ENCLOSED SPACE AND PRIVATE ROOF TERRACES SHALL NOT BE ROOF-OVER UNLESS WITH THE APPROVED ROOFING DESIGN. FOR AN ILLUSTRATION OF THE APPROVED ROOFING DESIGN, PLEASE REFER TO THE DIAGRAM ANNEXED HERETO AS "ANNEXURE B".

UNIT 3E P  
121SQM / 1302SQFT

TYPE 3E a  
112SQM / 1206SQFT

BLOCK 8                      BLOCK 10  
#02-13                      #02-23  
#02-14 (MIRROR)        #02-24 (MIRROR)

BLOCK 8                      BLOCK 10  
#03-13                      #03-23  
#03-14 (MIRROR)        #03-24 (MIRROR)



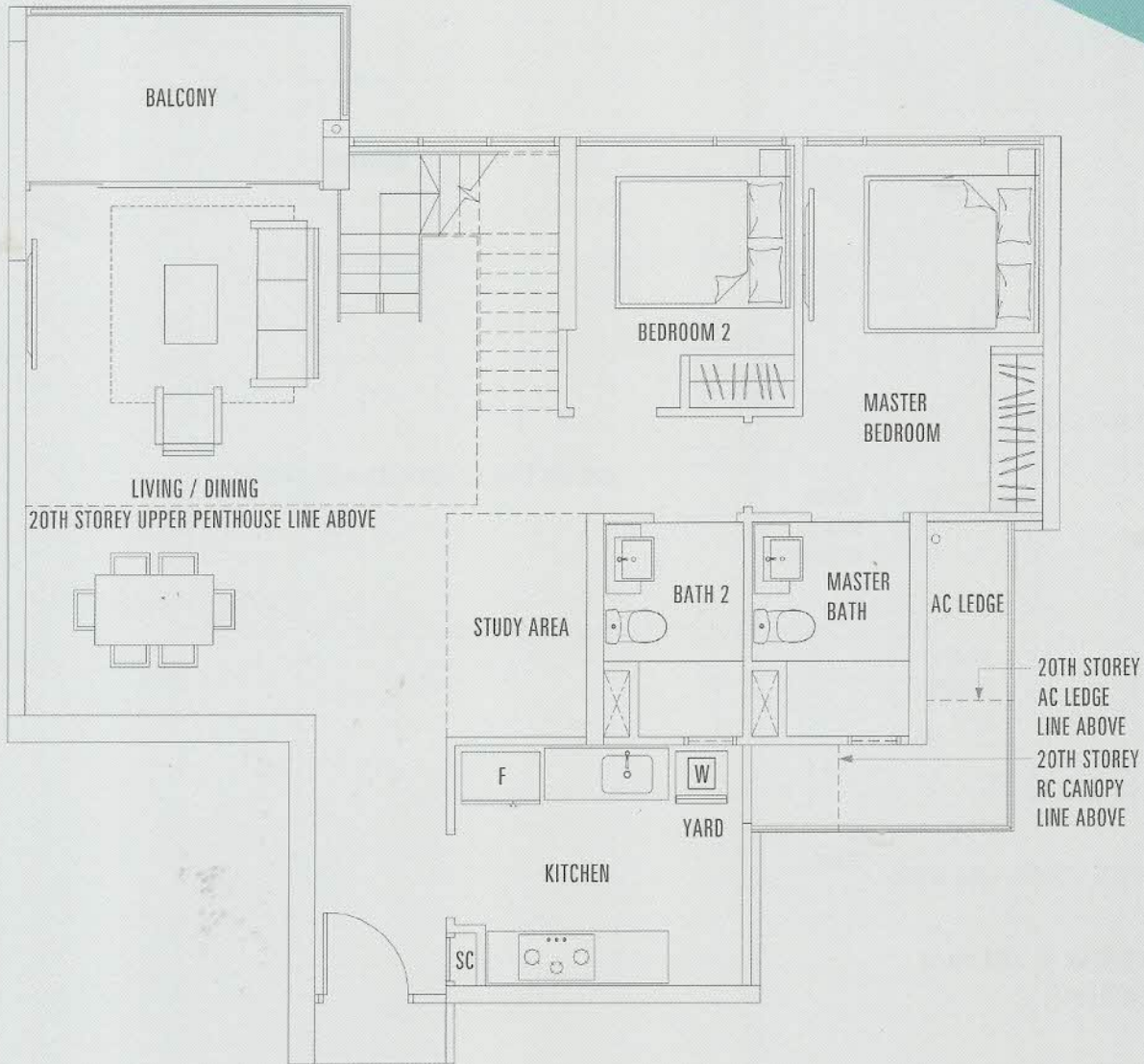
PART FLOOR PLAN OF UNIT PH 3D  
(UPPER PENTHOUSE)

THE ABOVE PLANS AND ILLUSTRATIONS ARE SUBJECT TO CHANGES AS MAY BE REQUIRED AND APPROVED BY THE RELEVANT AUTHORITIES. THE BALCONY SHALL NOT BE ENCLOSED UNLESS WITH THE APPROVED BALCONY SCREEN. FOR AN ILLUSTRATION OF THE APPROVED BALCONY SCREEN, PLEASE REFER TO THE DIAGRAM ANNEXED HERETO AS "ANNEXURE A". THE PRIVATE ENCLOSED SPACE AND PRIVATE ROOF TERRACES SHALL NOT BE ROOF OVER UNLESS WITH THE APPROVED ROOFING DESIGN. FOR AN ILLUSTRATION OF THE APPROVED ROOFING DESIGN, PLEASE REFER TO THE DIAGRAM ANNEXED HERETO AS "ANNEXURE B".

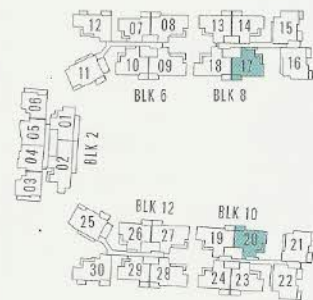
UNIT PH 3D  
160SQM / 1722SQFT

BLOCK 8                      BLOCK 10  
#19-17 (MIRROR)      #19-20

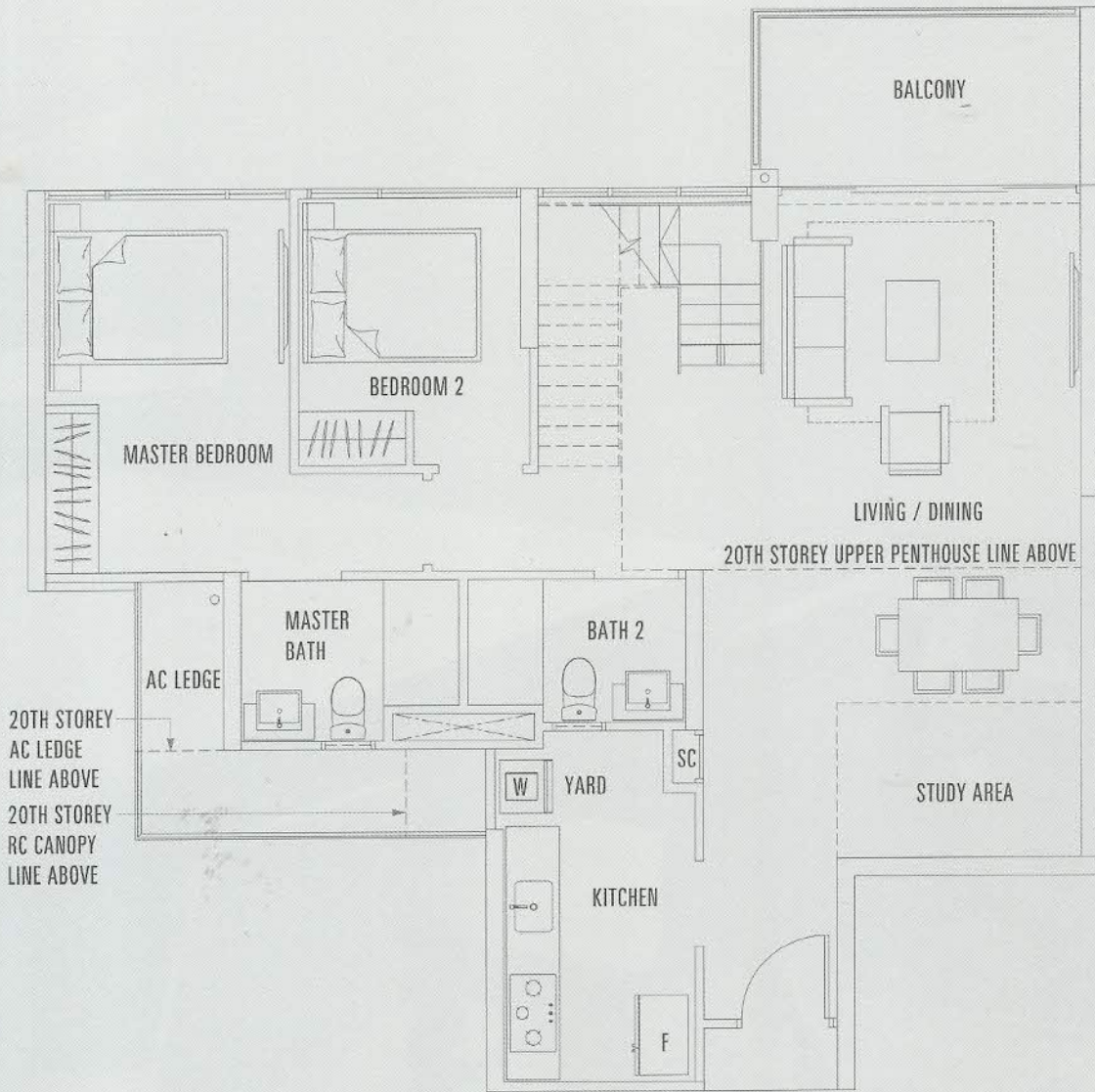
# 3 BEDROOM PENTHOUSE



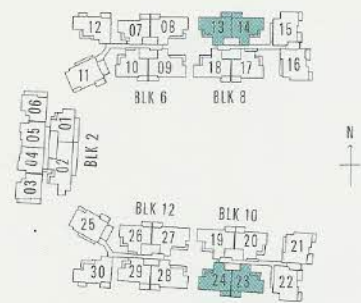
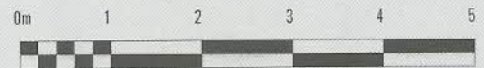
PART FLOOR PLAN OF UNIT PH 3D  
(LOWER PENTHOUSE)

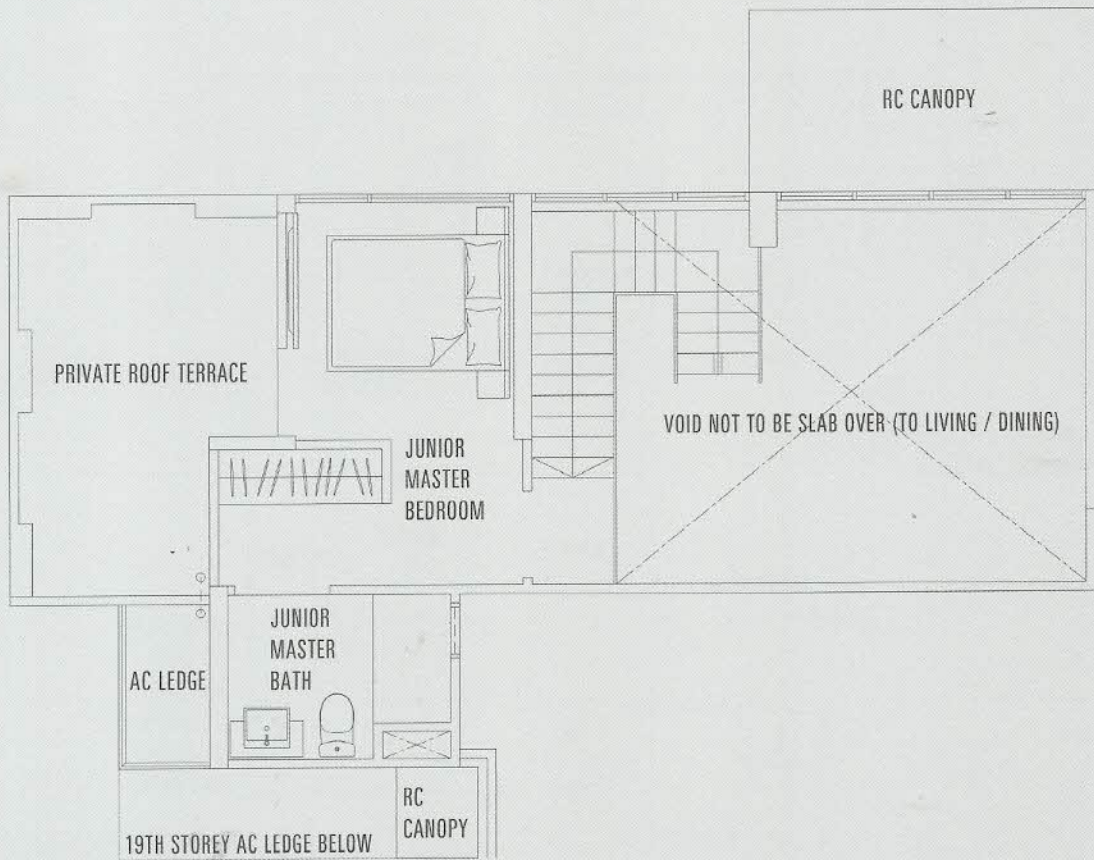


# 3 BEDROOM PENTHOUSE



PART FLOOR PLAN OF UNIT PH 3E  
(LOWER PENTHOUSE)





**PART FLOOR PLAN OF UNIT PH 3E  
(UPPER PENTHOUSE)**

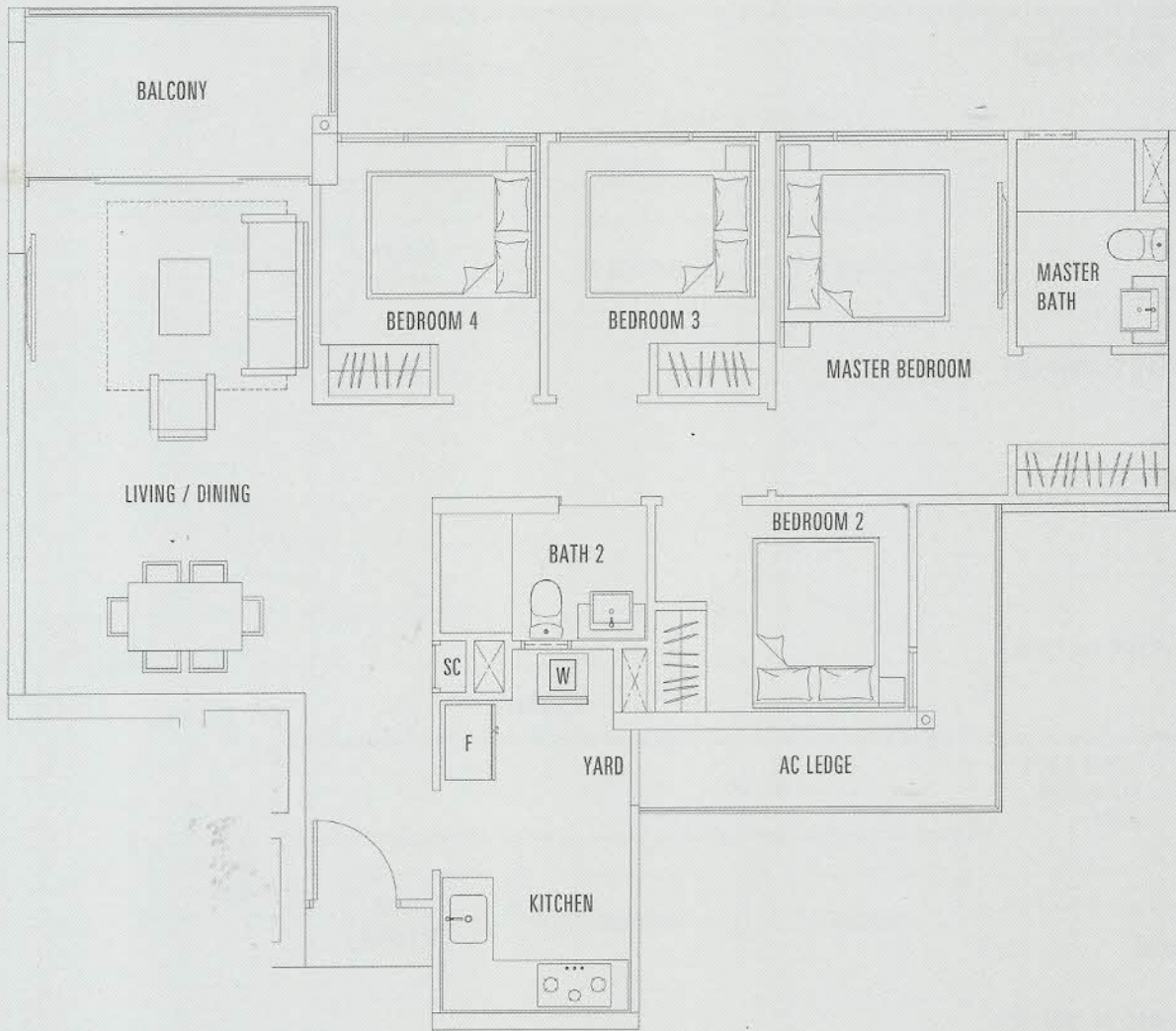
THE ABOVE PLANS AND ILLUSTRATIONS ARE SUBJECT TO CHANGES AS MAY BE REQUIRED AND APPROVED BY THE RELEVANT AUTHORITIES. THE BALCONY SHALL NOT BE ENCLOSED UNLESS WITH THE APPROVED BALCONY SCREEN. FOR AN ILLUSTRATION OF THE APPROVED BALCONY SCREEN, PLEASE REFER TO THE DIAGRAM ANNEXED HERETO AS "ANNEXURE A". THE PRIVATE ENCLOSED SPACE AND PRIVATE ROOF TERRACES SHALL NOT BE ROOF OVER UNLESS WITH THE APPROVED ROOFING DESIGN. FOR AN ILLUSTRATION OF THE APPROVED ROOFING DESIGN, PLEASE REFER TO THE DIAGRAM ANNEXED HERETO AS "ANNEXURE B".

**UNIT PH 3E  
159SQM / 1711SQFT**

<b>BLOCK 8</b>	<b>BLOCK 10</b>
<b>#19-13</b>	<b>#19-23</b>
<b>#19-14 (MIRROR)</b>	<b>#19-24 (MIRROR)</b>



# 4 BEDROOM



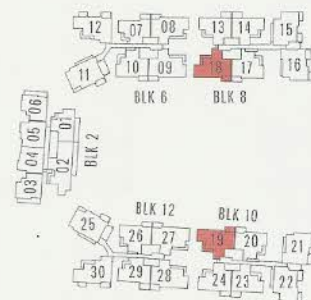
TYPICAL FLOOR PLAN OF UNIT 4A



UNIT 4A  
111SQM / 1195SQFT

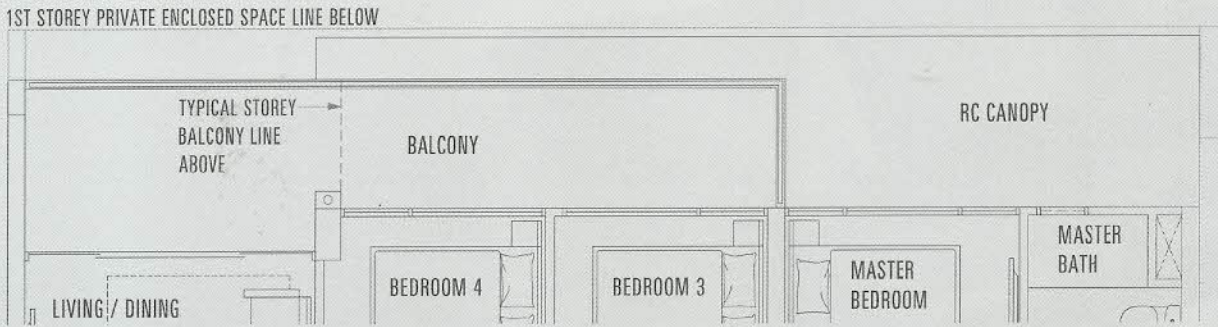
BLOCK 8  
#03-18 to #18-18

BLOCK 10  
#03-19 to #18-19 (MIRROR)





PART FLOOR PLAN OF UNIT 4A P



PART FLOOR PLAN OF UNIT 4A a

THE ABOVE PLANS AND ILLUSTRATIONS ARE SUBJECT TO CHANGES AS MAY BE REQUIRED AND APPROVED BY THE RELEVANT AUTHORITIES. THE BALCONY SHALL NOT BE ENCLOSED UNLESS WITH THE APPROVED BALCONY SCREEN. FOR AN ILLUSTRATION OF THE APPROVED BALCONY SCREEN, PLEASE REFER TO THE DIAGRAM ANNEXED HERETO AS "ANNEXURE A". THE PRIVATE ENCLOSED SPACE AND PRIVATE ROOF TERRACES SHALL NOT BE ROOF OVER UNLESS WITH THE APPROVED ROOFING DESIGN. FOR AN ILLUSTRATION OF THE APPROVED ROOFING DESIGN, PLEASE REFER TO THE DIAGRAM ANNEXED HERETO AS "ANNEXURE B".

UNIT 4A P  
135SQM / 1453SQFT

UNIT 4A a  
119SQM / 1281SQFT

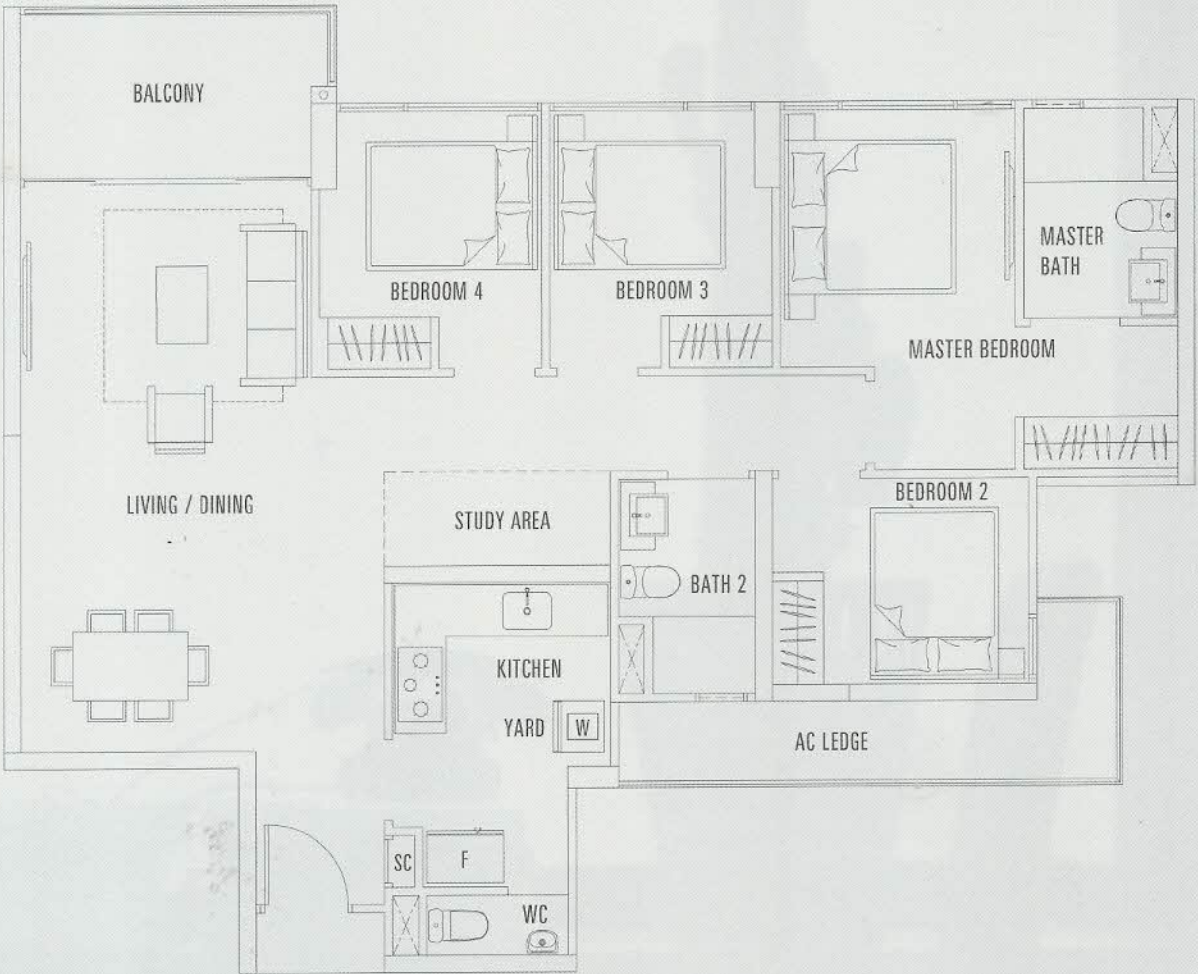
BLOCK 8  
#01-18

BLOCK 10  
#01-19 (MIRROR)

BLOCK 8  
#02-18

BLOCK 10  
#02-19 (MIRROR)

4 BEDROOM



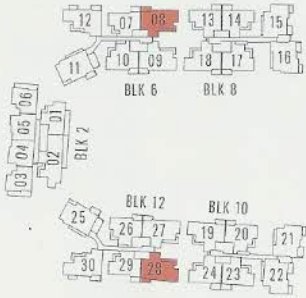
TYPICAL FLOOR PLAN OF UNIT 4B

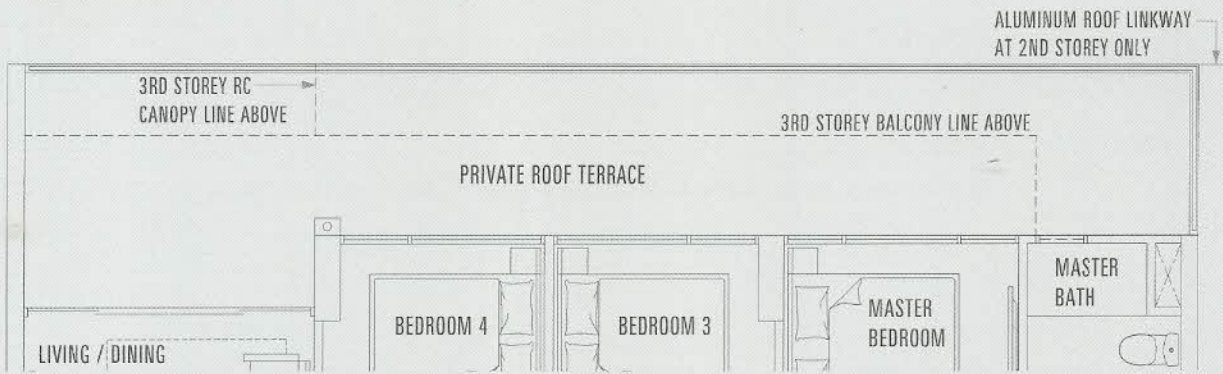


UNIT 4B  
115SQM / 1238SQFT

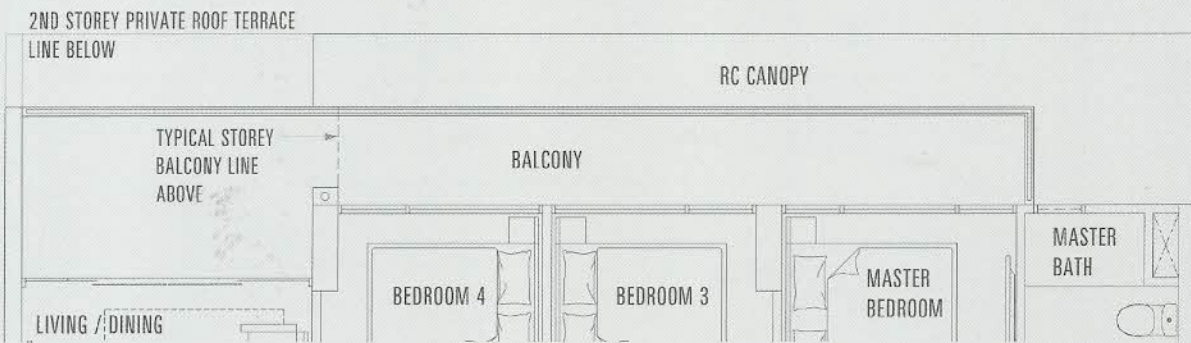
BLOCK 6  
#04-08 to #20-08

BLOCK 12  
#04-28 to #20-28 (MIRROR)





PART FLOOR PLAN OF UNIT 4B P



PART FLOOR PLAN OF UNIT 4B a

THE ABOVE PLANS AND ILLUSTRATIONS ARE SUBJECT TO CHANGES AS MAY BE REQUIRED AND APPROVED BY THE RELEVANT AUTHORITIES. THE BALCONY SHALL NOT BE ENCLOSED UNLESS WITH THE APPROVED BALCONY SCREEN. FOR AN ILLUSTRATION OF THE APPROVED BALCONY SCREEN, PLEASE REFER TO THE DIAGRAM ANNEXED HERETO AS "ANNEXURE A". THE PRIVATE ENCLOSED SPACE AND PRIVATE ROOF TERRACES SHALL NOT BE ROOF OVER UNLESS WITH THE APPROVED ROOFING DESIGN. FOR AN ILLUSTRATION OF THE APPROVED ROOFING DESIGN, PLEASE REFER TO THE DIAGRAM ANNEXED HERETO AS "ANNEXURE B".

UNIT 4B P

139SQM / 1496SQFT

BLOCK 6

#02-08

BLOCK 12

#02-28 (MIRROR)

UNIT 4B a

125SQM / 1345SQFT

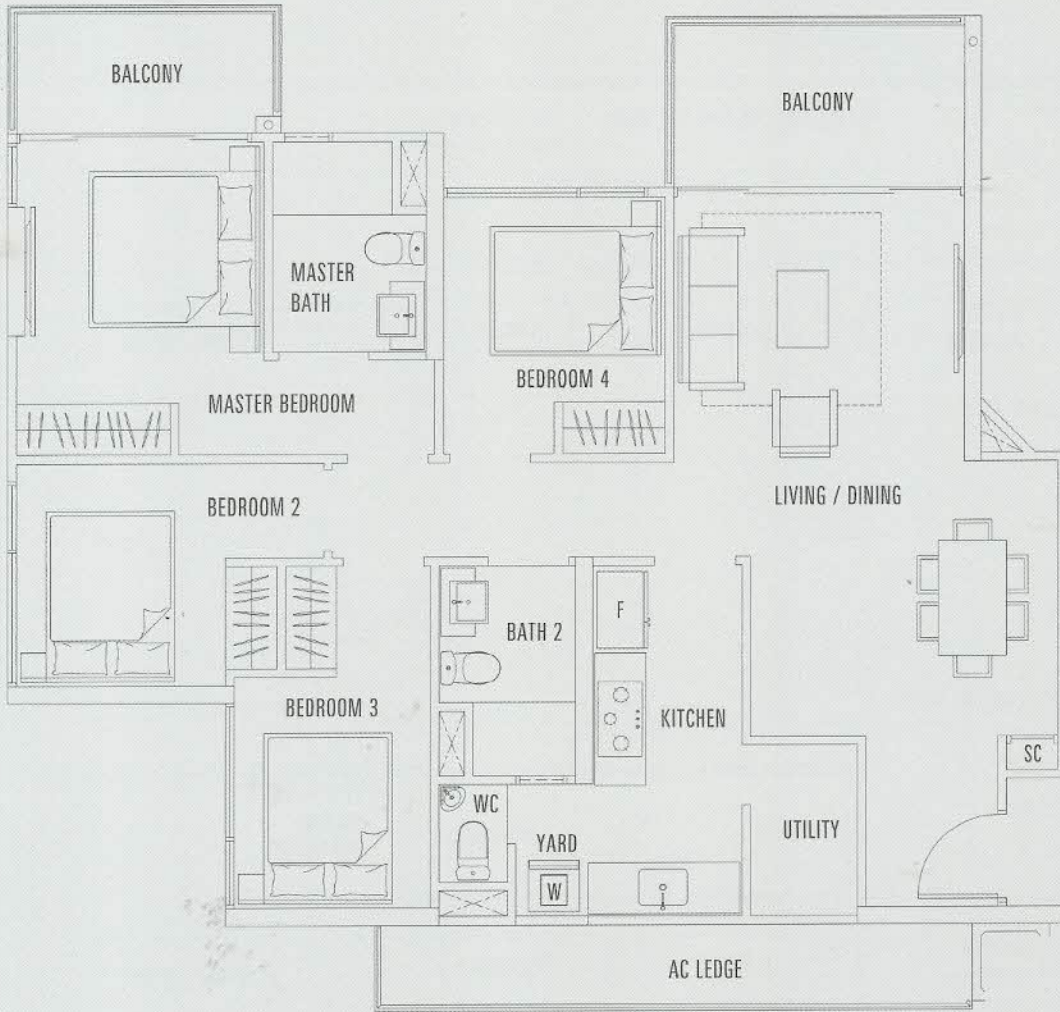
BLOCK 6

#03-08

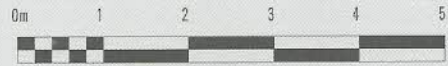
BLOCK 12

#03-28 (MIRROR)

4 BEDROOM  
PREMIUM



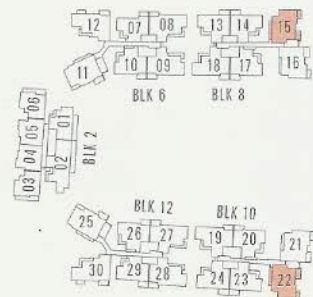
TYPICAL FLOOR PLAN OF UNIT 4C

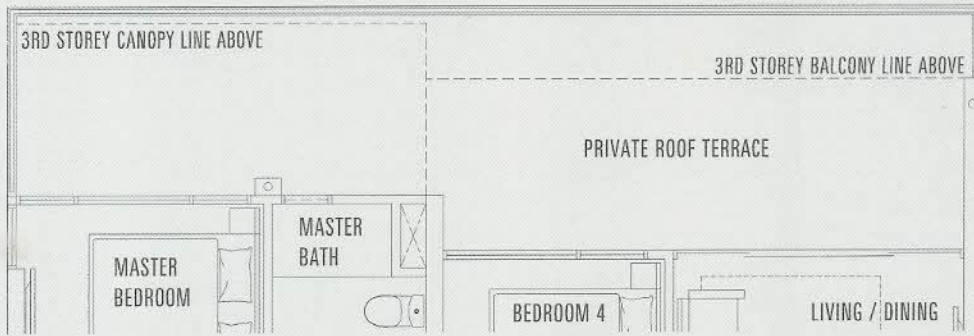


UNIT 4C  
116SQM / 1249SQFT

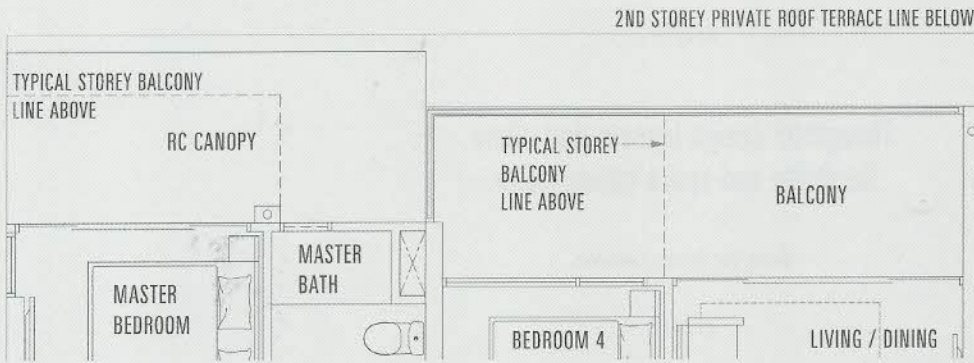
BLOCK 8  
#04-15 to #18-15

BLOCK 10  
#04-22 to #18-22 (MIRROR)





PART FLOOR PLAN OF UNIT 4C P



PART FLOOR PLAN OF UNIT 4C a

THE ABOVE PLANS AND ILLUSTRATIONS ARE SUBJECT TO CHANGES AS MAY BE REQUIRED AND APPROVED BY THE RELEVANT AUTHORITIES. THE BALCONY SHALL NOT BE ENCLOSED UNLESS WITH THE APPROVED BALCONY SCREEN. FOR AN ILLUSTRATION OF THE APPROVED BALCONY SCREEN, PLEASE REFER TO THE DIAGRAM ANNEXED HERETO AS "ANNEXURE A". THE PRIVATE ENCLOSED SPACE AND PRIVATE ROOF TERRACES SHALL NOT BE ROOF-OVER UNLESS WITH THE APPROVED ROOFING DESIGN. FOR AN ILLUSTRATION OF THE APPROVED ROOFING DESIGN, PLEASE REFER TO THE DIAGRAM ANNEXED HERETO AS "ANNEXURE B".

UNIT 4C P  
133SQM / 1432SQFT

UNIT 4C a  
117SQM / 1259SQFT

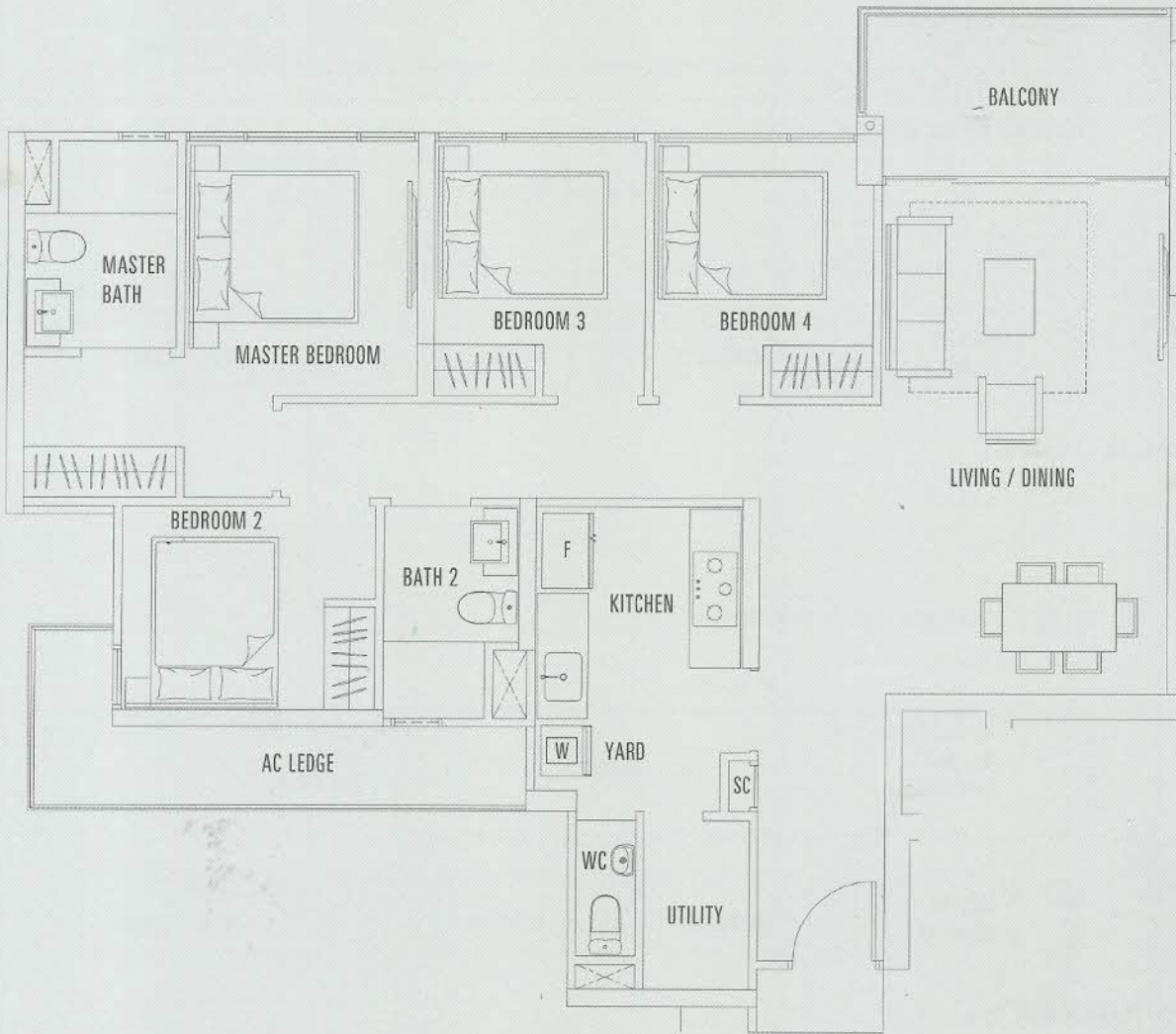
BLOCK 8  
#02-15

BLOCK 10  
#02-22 (MIRROR)

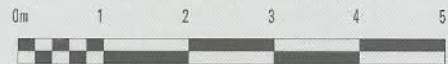
BLOCK 8  
#03-15

BLOCK 10  
#03-22 (MIRROR)

# 4 BEDROOM PREMIUM



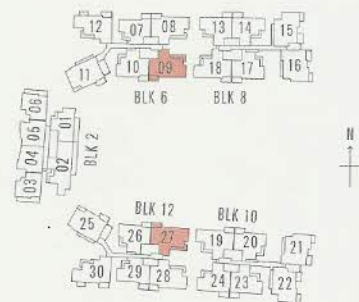
TYPICAL FLOOR PLAN OF UNIT 4D

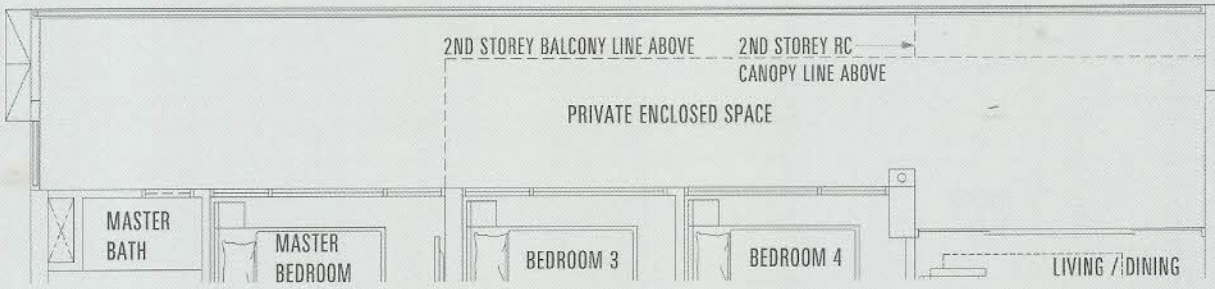


UNIT 4D  
116SQM / 1249SQFT

BLOCK 6  
#03-09 to #20-09

BLOCK 12  
#03-27 to #20-27 (MIRROR)





PART FLOOR PLAN OF UNIT 4D P



PART FLOOR PLAN OF UNIT 4D a

THE ABOVE PLANS AND ILLUSTRATIONS ARE SUBJECT TO CHANGES AS MAY BE REQUIRED AND APPROVED BY THE RELEVANT AUTHORITIES. THE BALCONY SHALL NOT BE ENCLOSED UNLESS WITH THE APPROVED BALCONY SCREEN. FOR AN ILLUSTRATION OF THE APPROVED BALCONY SCREEN, PLEASE REFER TO THE DIAGRAM ANNEXED HERETO AS "ANNEXURE A". THE PRIVATE ENCLOSED SPACE AND PRIVATE ROOF TERRACES SHALL NOT BE ROOF OVER UNLESS WITH THE APPROVED ROOFING DESIGN. FOR AN ILLUSTRATION OF THE APPROVED ROOFING DESIGN, PLEASE REFER TO THE DIAGRAM ANNEXED HERETO AS "ANNEXURE B".

UNIT 4D P  
140SQM / 1507SQFT

UNIT 4D a  
124SQM / 1335SQFT

BLOCK 6  
#01-09

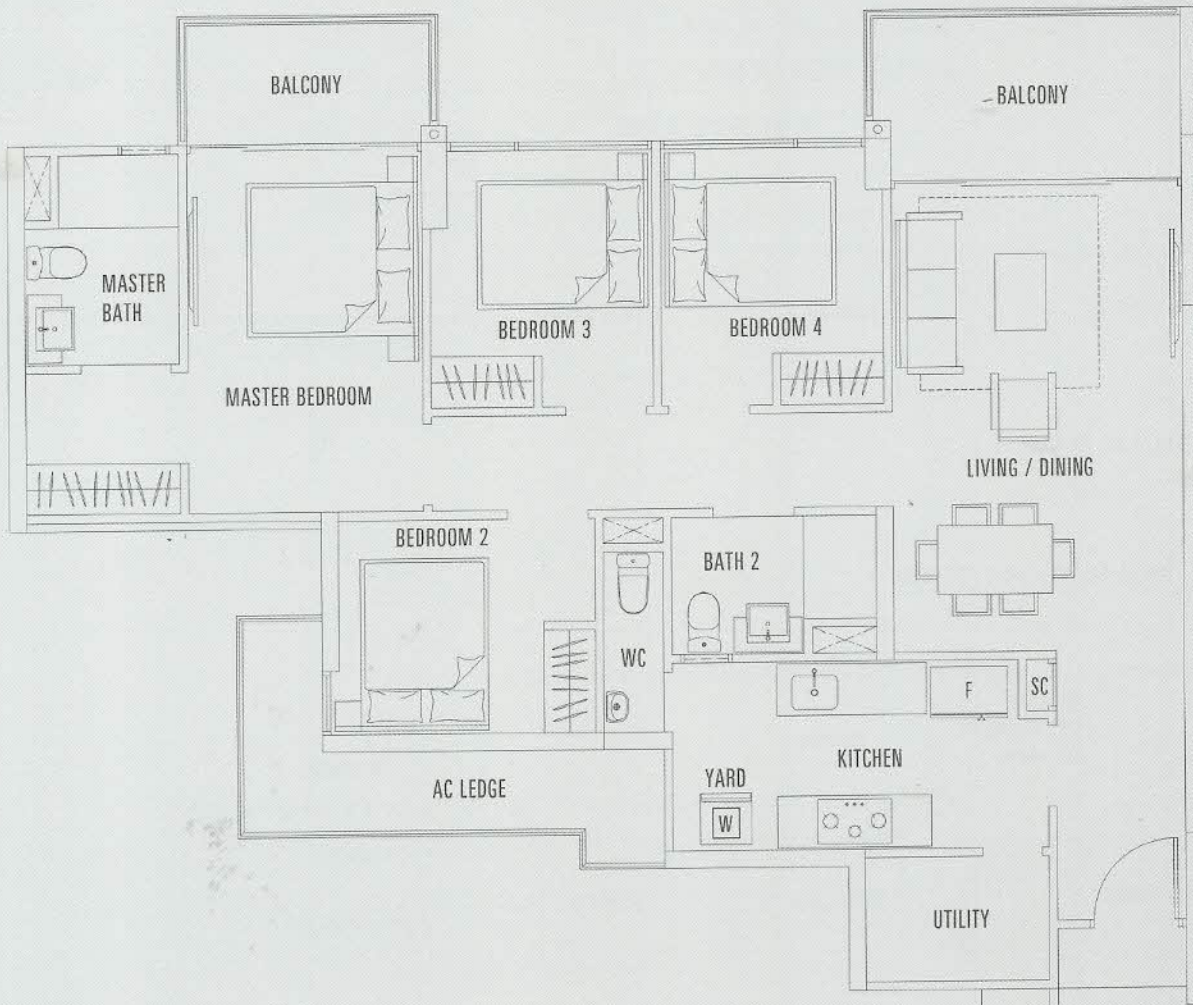
BLOCK 12  
#01-27 (MIRROR)

BLOCK 6  
#02-09

BLOCK 12  
#02-27 (MIRROR)



# 4 BEDROOM PREMIUM



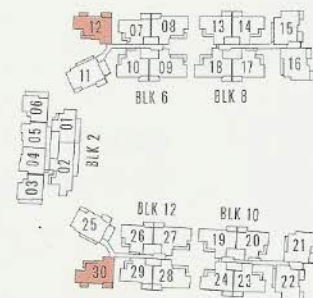
TYPICAL FLOOR PLAN OF UNIT 4E

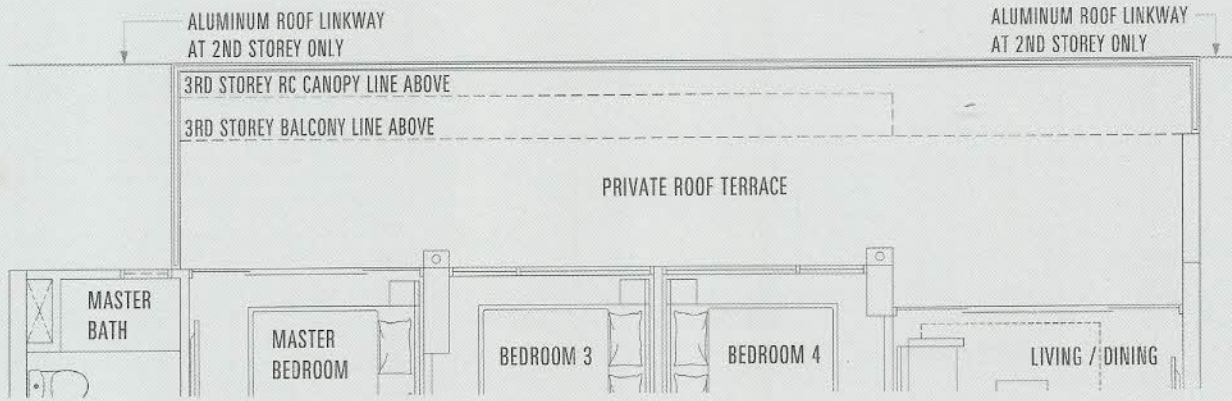


UNIT 4E  
117SQM / 1259SQFT

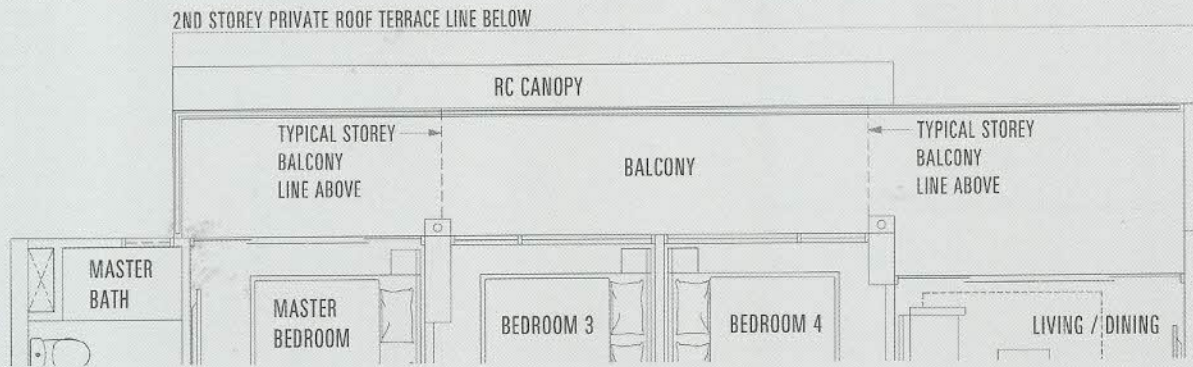
BLOCK 6  
#04-12 to #19-12

BLOCK 12  
#04-30 to #19-30 (MIRROR)





PART FLOOR PLAN OF UNIT 4E P



PART FLOOR PLAN OF UNIT 4E a

THE ABOVE PLANS AND ILLUSTRATIONS ARE SUBJECT TO CHANGES AS MAY BE REQUIRED AND APPROVED BY THE RELEVANT AUTHORITIES. THE BALCONY SHALL NOT BE ENCLOSED UNLESS WITH THE APPROVED BALCONY SCREEN. FOR AN ILLUSTRATION OF THE APPROVED BALCONY SCREEN, PLEASE REFER TO THE DIAGRAM ANNEXED HERETO AS "ANNEXURE A". THE PRIVATE ENCLOSED SPACE AND PRIVATE ROOF TERRACES SHALL NOT BE ROOF OVER UNLESS WITH THE APPROVED ROOFING DESIGN. FOR AN ILLUSTRATION OF THE APPROVED ROOFING DESIGN, PLEASE REFER TO THE DIAGRAM ANNEXED HERETO AS "ANNEXURE B".

UNIT 4E P  
136SQM / 1464SQFT

UNIT 4E a  
125SQM / 1345SQFT

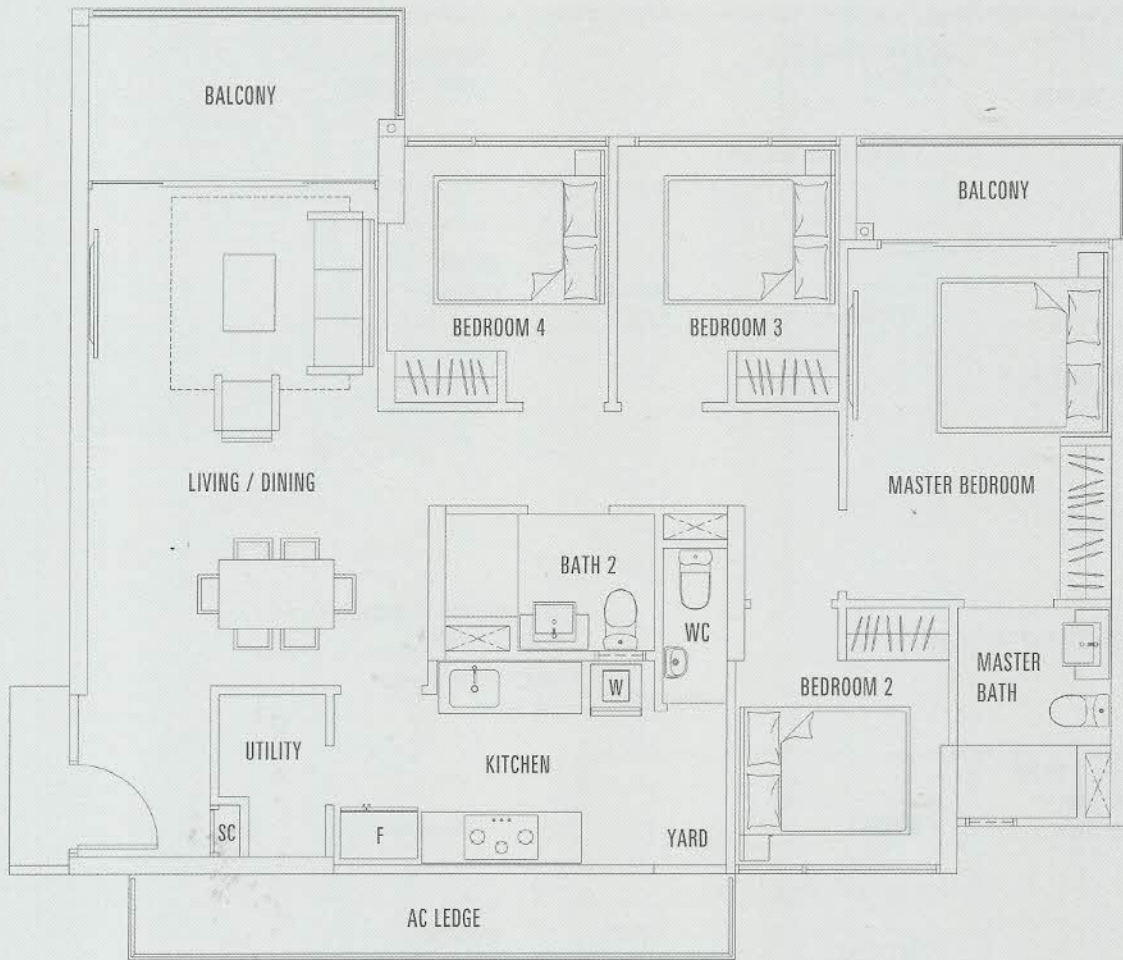
BLOCK 6  
#02-12

BLOCK 12  
#02-30 (MIRROR)

BLOCK 6  
#03-12

BLOCK 12  
#03-30 (MIRROR)

4 BEDROOM  
PREMIUM



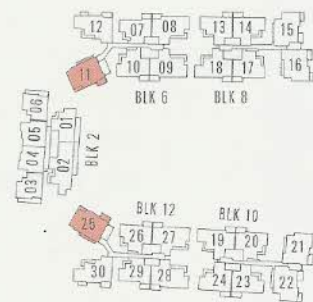
TYPICAL FLOOR PLAN OF UNIT 4F

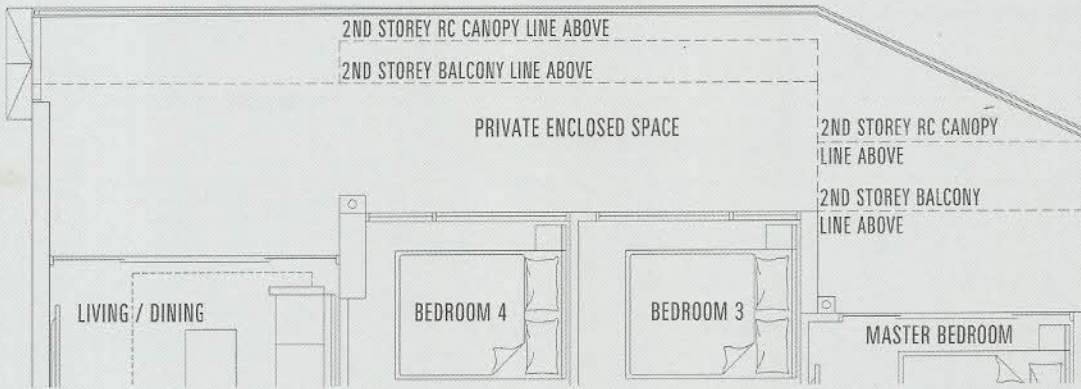


UNIT 4F  
116SQM / 1249SQFT

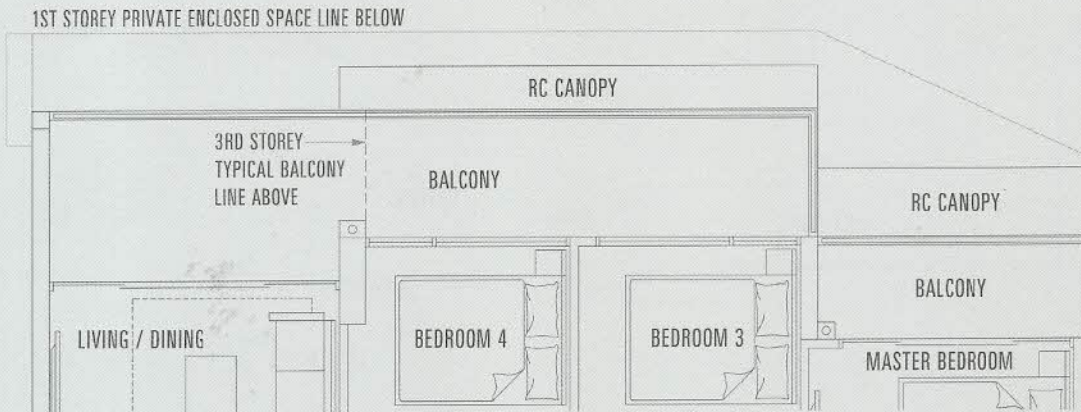
BLOCK 6  
#03-11 to #19-11

BLOCK 12  
#03-25 to #19-25 (MIRROR)





PART FLOOR PLAN OF UNIT 4F P



PART FLOOR PLAN OF UNIT 4F a

THE ABOVE PLANS AND ILLUSTRATIONS ARE SUBJECT TO CHANGES AS MAY BE REQUIRED AND APPROVED BY THE RELEVANT AUTHORITIES. THE BALCONY SHALL NOT BE ENCLOSED UNLESS WITH THE APPROVED BALCONY SCREEN. FOR AN ILLUSTRATION OF THE APPROVED BALCONY SCREEN, PLEASE REFER TO THE DIAGRAM ANNEXED HERETO AS "ANNEXURE A". THE PRIVATE ENCLOSED SPACE AND PRIVATE ROOF TERRACES SHALL NOT BE ROOF OVER UNLESS WITH THE APPROVED ROOFING DESIGN. FOR AN ILLUSTRATION OF THE APPROVED ROOFING DESIGN, PLEASE REFER TO THE DIAGRAM ANNEXED HERETO AS "ANNEXURE B".

UNIT 4F P  
138SQM / 1485SQFT

UNIT 4F a  
124SQM / 1335SQFT

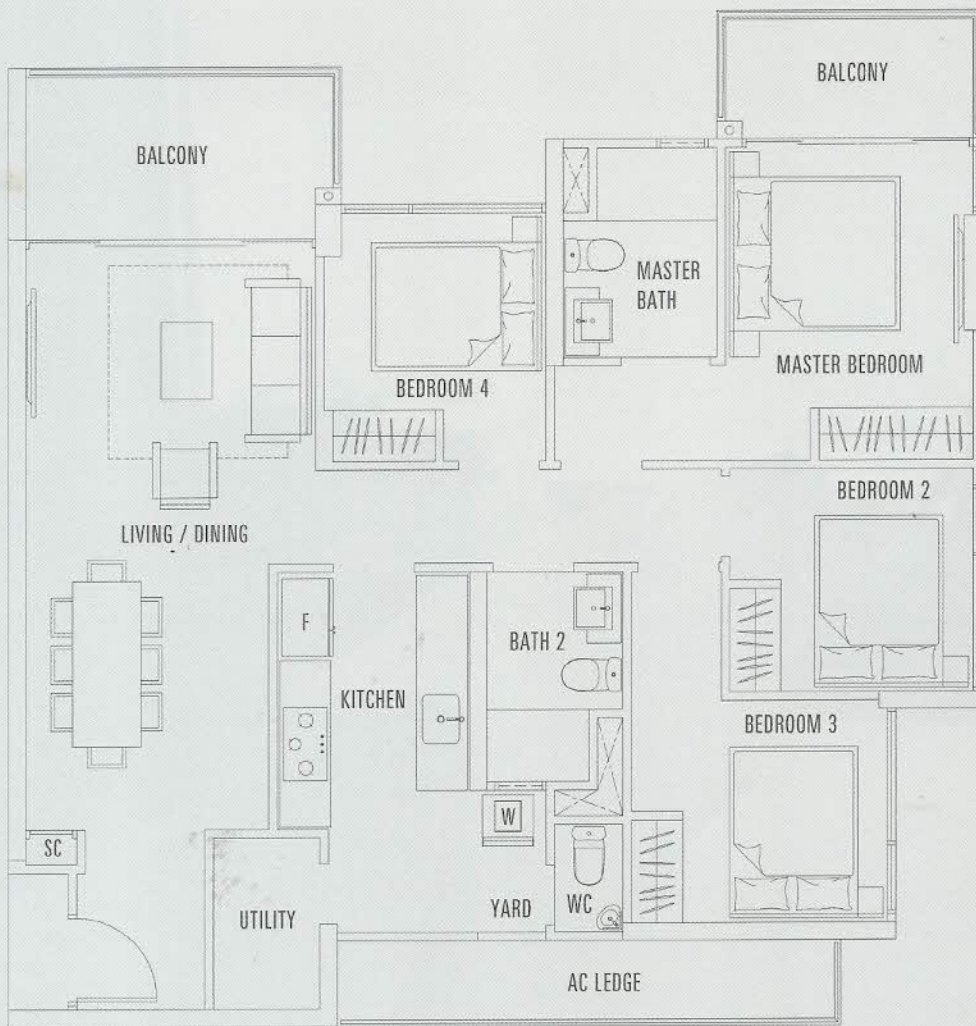
BLOCK 6  
#01-11

BLOCK 12  
#01-25 (MIRROR)

BLOCK 6  
#02-11

BLOCK 12  
#02-25 (MIRROR)

4 BEDROOM  
PREMIUM

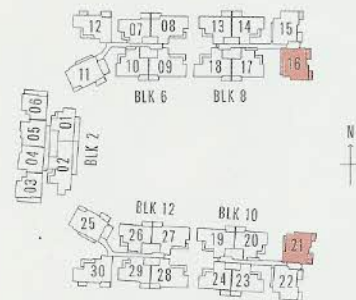


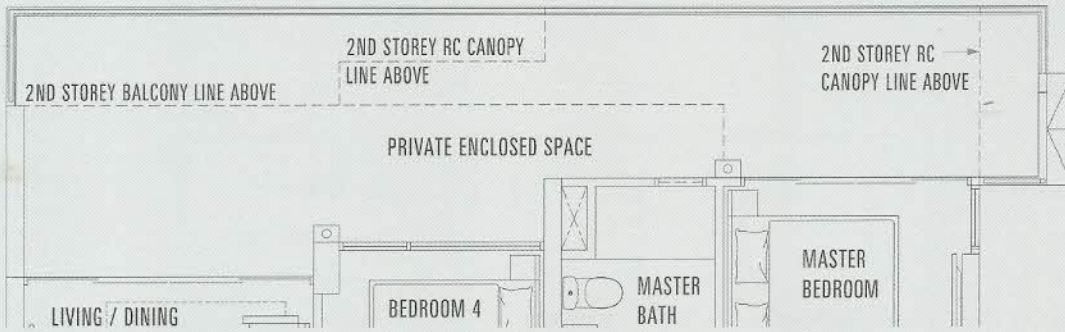
TYPICAL FLOOR PLAN OF UNIT 4G

UNIT 4G  
116SQM / 1249SQFT

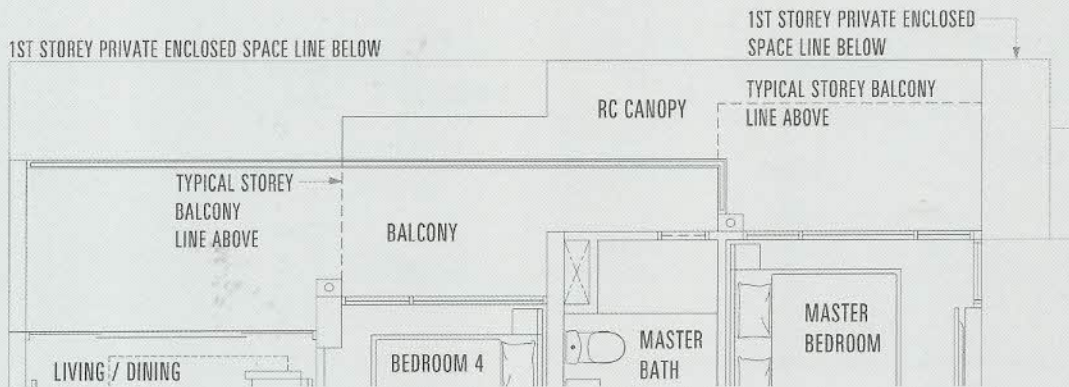
BLOCK 8  
#03-16 to #18-16

BLOCK 10  
#03-21 to #18-21 (MIRROR)





PART FLOOR PLAN OF UNIT 4G P



PART FLOOR PLAN OF UNIT 4G a

THE ABOVE PLANS AND ILLUSTRATIONS ARE SUBJECT TO CHANGES AS MAY BE REQUIRED AND APPROVED BY THE RELEVANT AUTHORITIES. THE BALCONY SHALL NOT BE ENCLOSED UNLESS WITH THE APPROVED BALCONY SCREEN. FOR AN ILLUSTRATION OF THE APPROVED BALCONY SCREEN, PLEASE REFER TO THE DIAGRAM ANNEXED HERETO AS "ANNEXURE A". THE PRIVATE ENCLOSED SPACE AND PRIVATE ROOF TERRACES SHALL NOT BE ROOF OVER UNLESS WITH THE APPROVED ROOFING DESIGN. FOR AN ILLUSTRATION OF THE APPROVED ROOFING DESIGN, PLEASE REFER TO THE DIAGRAM ANNEXED HERETO AS "ANNEXURE B".

UNIT 4G P  
134SQM / 1442SQFT

UNIT 4G a  
117SQM / 1259SQFT

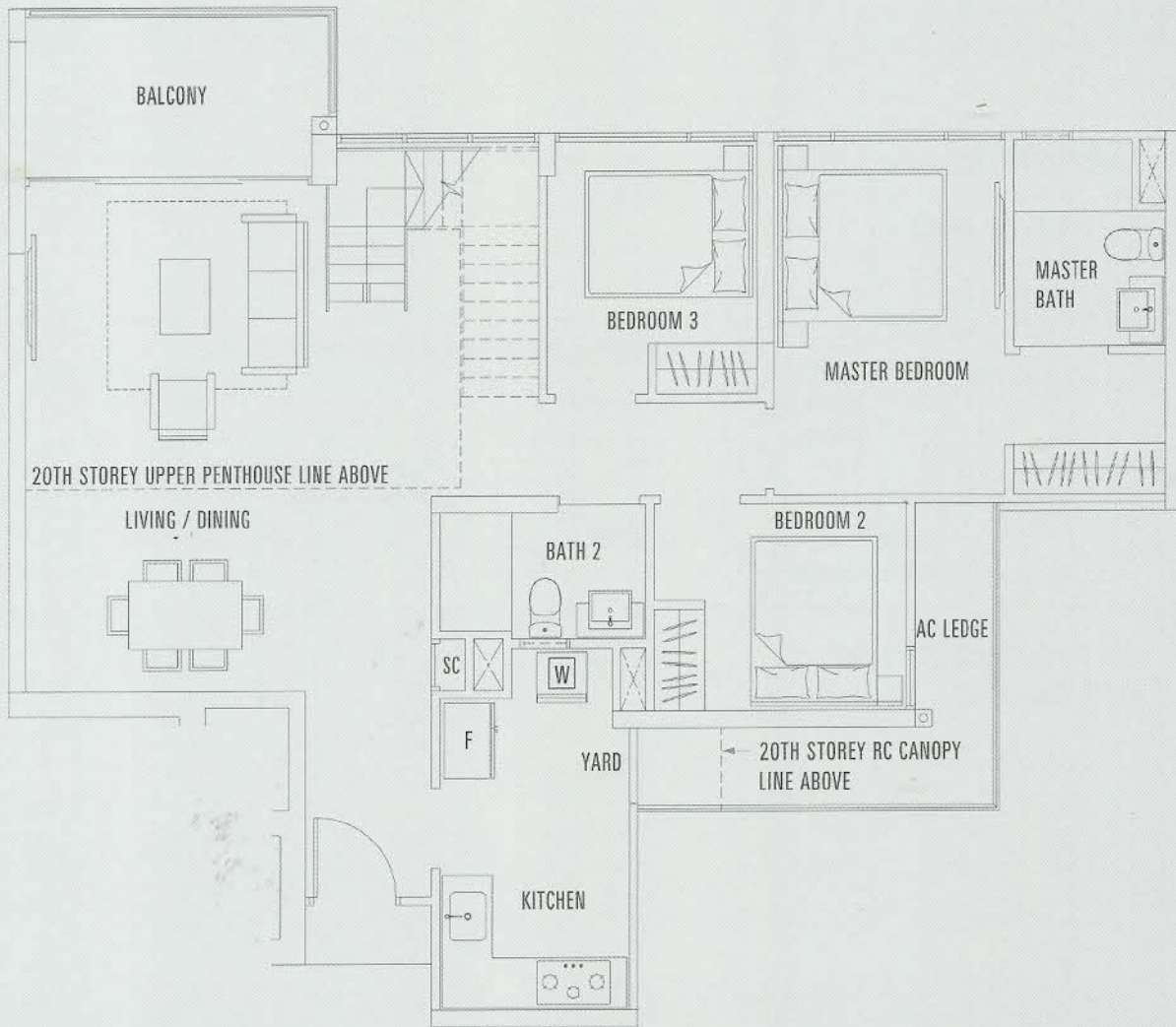
BLOCK 8  
#01-16

BLOCK 10  
#01-21 (MIRROR)

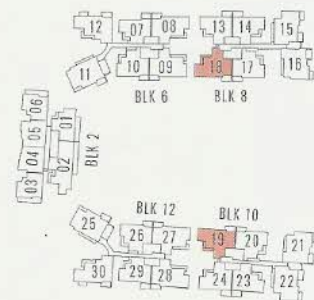
BLOCK 8  
#02-16

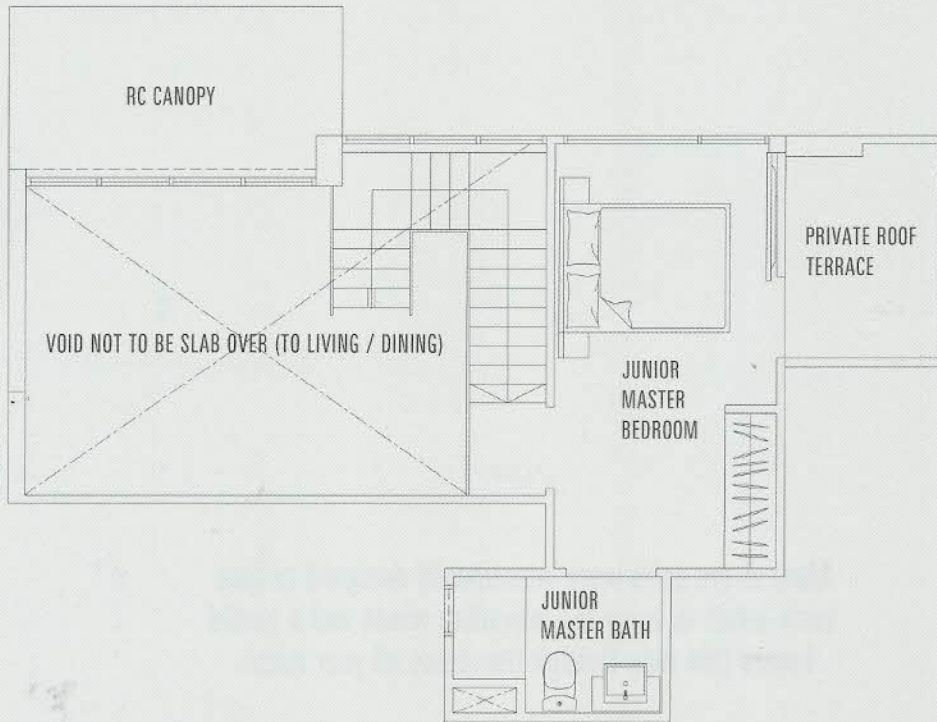
BLOCK 10  
#02-21 (MIRROR)

# 4 BEDROOM PENTHOUSE



PART FLOOR PLAN OF UNIT PH 4A  
(LOWER PENTHOUSE)





PART FLOOR PLAN OF UNIT PH 4A  
(UPPER PENTHOUSE)

THE ABOVE PLANS AND ILLUSTRATIONS ARE SUBJECT TO CHANGES AS MAY BE REQUIRED AND APPROVED BY THE RELEVANT AUTHORITIES; THE BALCONY SHALL NOT BE ENCLOSED UNLESS WITH THE APPROVED BALCONY SCREEN. FOR AN ILLUSTRATION OF THE APPROVED BALCONY SCREEN, PLEASE REFER TO THE DIAGRAM ANNEXED HERETO AS "ANNEXURE A". THE PRIVATE ENCLOSED SPACE AND PRIVATE ROOF TERRACES SHALL NOT BE ROOF OVER UNLESS WITH THE APPROVED ROOFING DESIGN. FOR AN ILLUSTRATION OF THE APPROVED ROOFING DESIGN, PLEASE REFER TO THE DIAGRAM ANNEXED HERETO AS "ANNEXURE B".

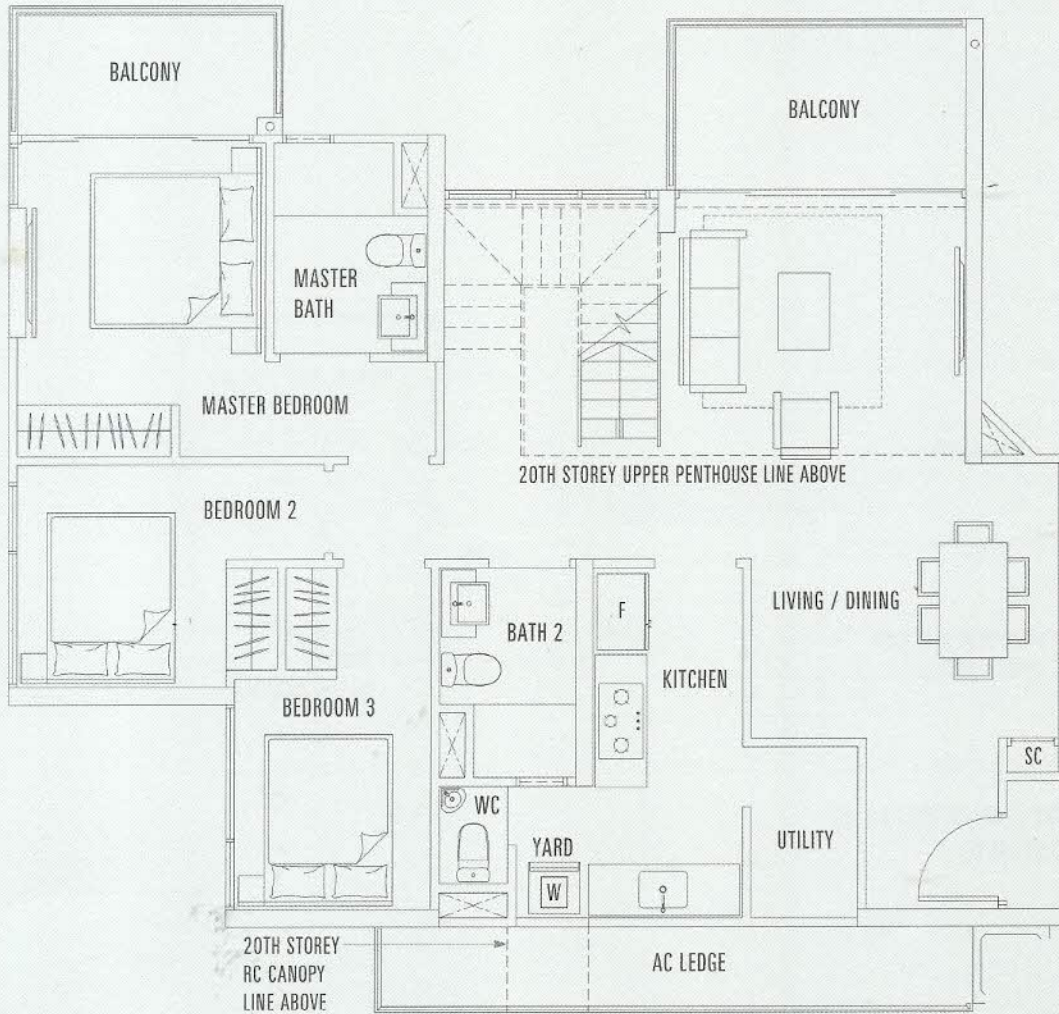
UNIT PH 4A  
158SQM / 1701SQFT

BLOCK 8  
#19-18

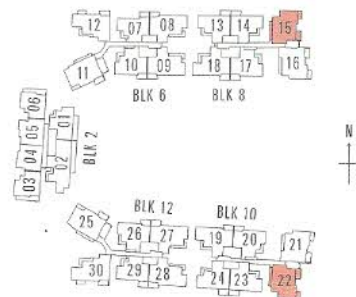
BLOCK 10  
#19-19 (MIRROR)

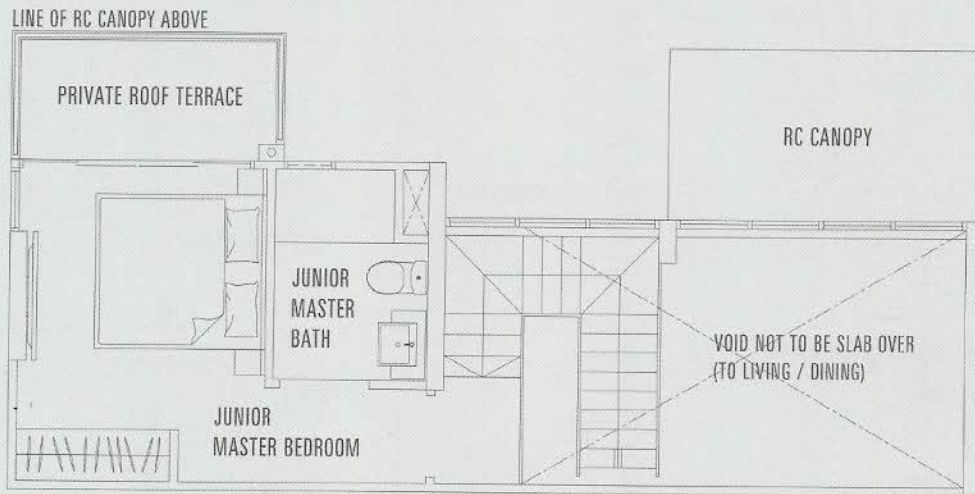


# 4 BEDROOM PENTHOUSE



PART FLOOR PLAN OF UNIT PH 4C  
(LOWER PENTHOUSE)





PART FLOOR PLAN OF UNIT PH 4C  
(UPPER PENTHOUSE)

THE ABOVE PLANS AND ILLUSTRATIONS ARE SUBJECT TO CHANGES AS MAY BE REQUIRED AND APPROVED BY THE RELEVANT AUTHORITIES. THE BALCONY SHALL NOT BE ENCLOSED UNLESS WITH THE APPROVED BALCONY SCREEN. FOR AN ILLUSTRATION OF THE APPROVED BALCONY SCREEN, PLEASE REFER TO THE DIAGRAM ANNEXED HERETO AS "ANNEXURE A". THE PRIVATE ENCLOSED SPACE AND PRIVATE ROOF TERRACES SHALL NOT BE ROOF OVER UNLESS WITH THE APPROVED ROOFING DESIGN. FOR AN ILLUSTRATION OF THE APPROVED ROOFING DESIGN, PLEASE REFER TO THE DIAGRAM ANNEXED HERETO AS "ANNEXURE B".

UNIT PH 4C

158SQM / 1701SQFT

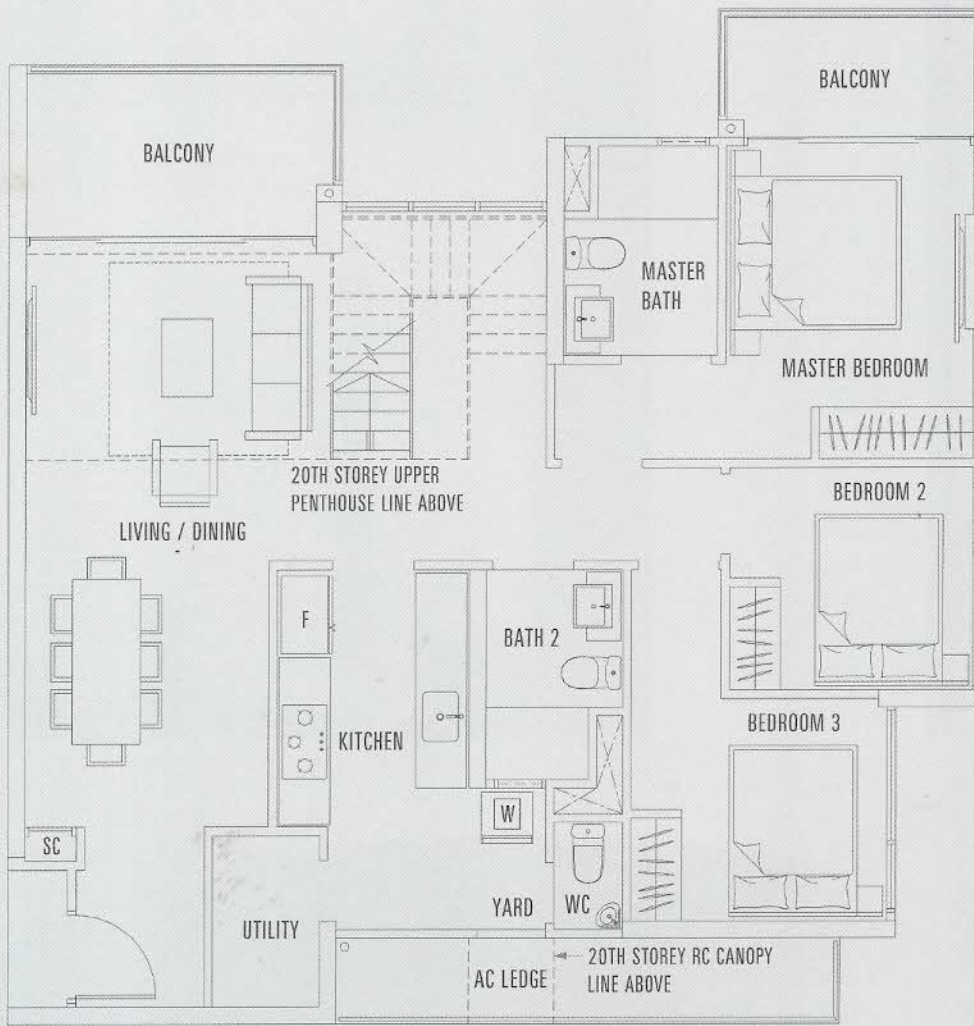
BLOCK 8

#19-15

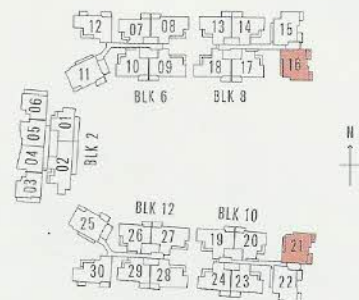
BLOCK 10

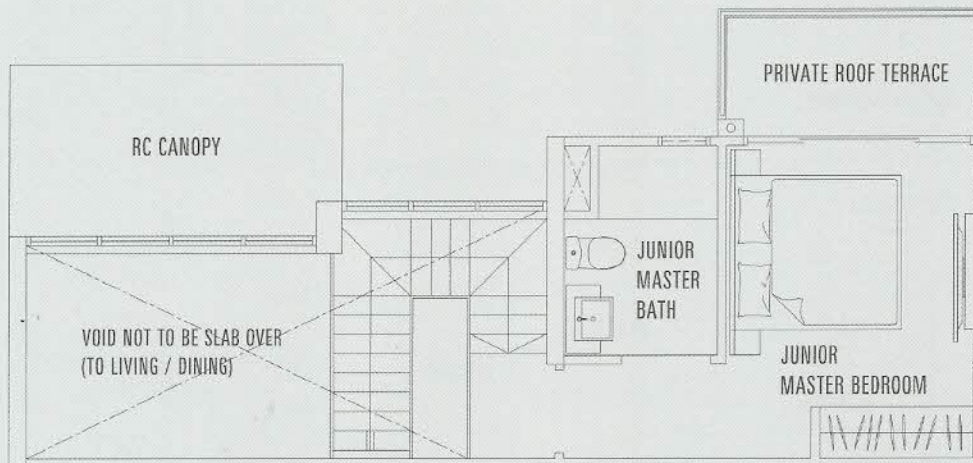
#19-22 (MIRROR)

# 4 BEDROOM PENTHOUSE



PART FLOOR PLAN OF UNIT PH 4G  
(LOWER PENTHOUSE)





PART FLOOR PLAN OF UNIT PH 4G  
(UPPER PENTHOUSE)

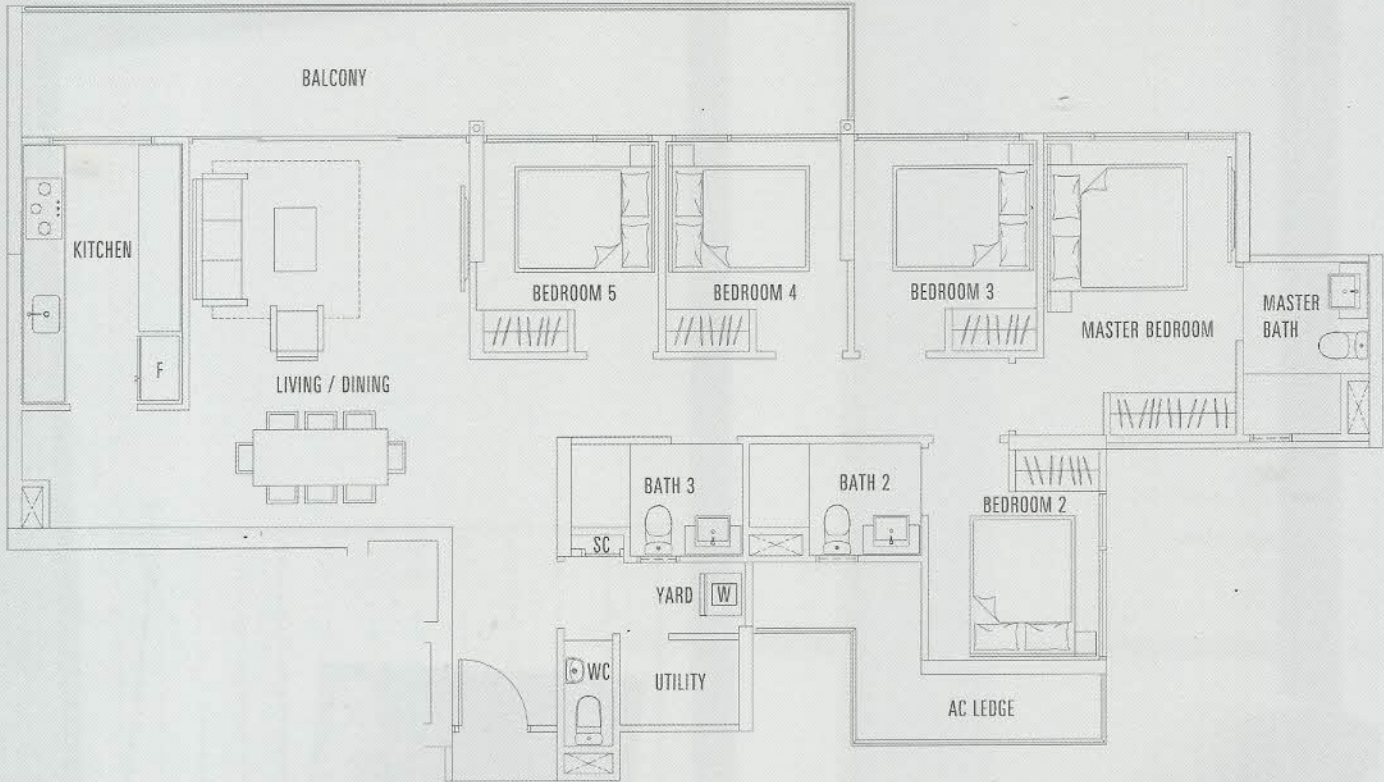
THE ABOVE PLANS AND ILLUSTRATIONS ARE SUBJECT TO CHANGES AS MAY BE REQUIRED AND APPROVED BY THE RELEVANT AUTHORITIES. THE BALCONY SHALL NOT BE ENCLOSED UNLESS WITH THE APPROVED BALCONY SCREEN. FOR AN ILLUSTRATION OF THE APPROVED BALCONY SCREEN, PLEASE REFER TO THE DIAGRAM ANNEXED HERETO AS "ANNEXURE A". THE PRIVATE ENCLOSED SPACE AND PRIVATE ROOF TERRACES SHALL NOT BE ROOF OVER UNLESS WITH THE APPROVED ROOFING DESIGN. FOR AN ILLUSTRATION OF THE APPROVED ROOFING DESIGN, PLEASE REFER TO THE DIAGRAM ANNEXED HERETO AS "ANNEXURE B".

UNIT PH 4G  
156SQM / 1680SQFT

BLOCK 8  
#19-16

BLOCK 10  
#19-21 (MIRROR)

# 5 BEDROOM

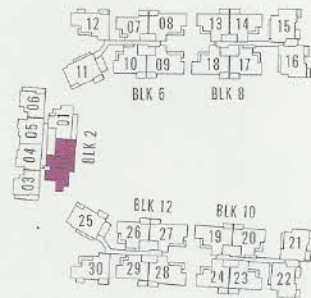


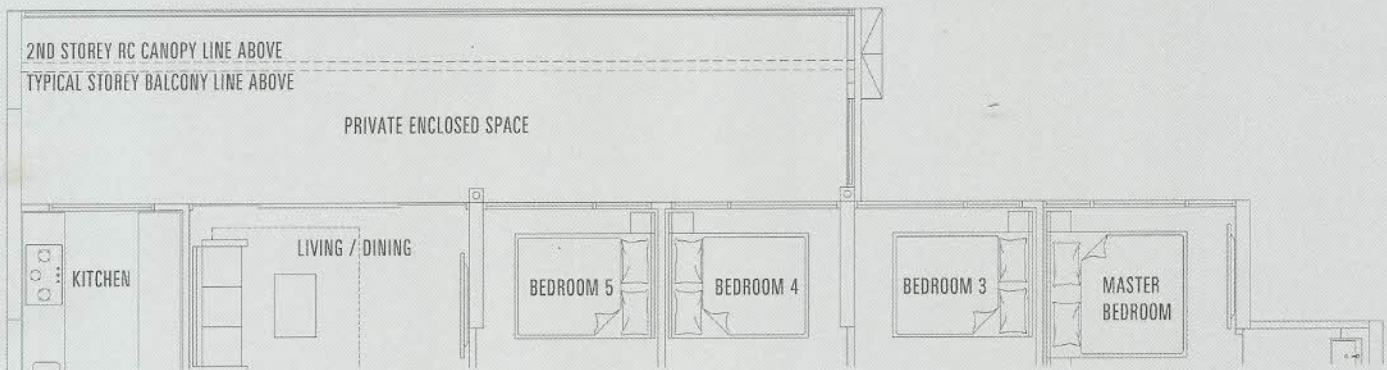
TYPICAL FLOOR PLAN OF UNIT 5A



UNIT 5A  
149SQM / 1604SQFT

BLOCK 2  
#03-02 to #19-02





PART FLOOR PLAN OF UNIT 5A P



PART FLOOR PLAN OF UNIT 5A a

THE ABOVE PLANS AND ILLUSTRATIONS ARE SUBJECT TO CHANGES AS MAY BE REQUIRED AND APPROVED BY THE RELEVANT AUTHORITIES. THE BALCONY SHALL NOT BE ENCLOSED UNLESS WITH THE APPROVED BALCONY SCREEN. FOR AN ILLUSTRATION OF THE APPROVED BALCONY SCREEN, PLEASE REFER TO THE DIAGRAM ANNEXED HERETO AS "ANNEXURE A". THE PRIVATE ENCLOSED SPACE AND PRIVATE ROOF TERRACES SHALL NOT BE ROOF OVER UNLESS WITH THE APPROVED ROOFING DESIGN. FOR AN ILLUSTRATION OF THE APPROVED ROOFING DESIGN, PLEASE REFER TO THE DIAGRAM ANNEXED HERETO AS "ANNEXURE B".

UNIT 5A P  
159SQM / 1711SQFT

BLOCK 2  
#01-02

UNIT 5A a  
149SQM / 1604SQFT

BLOCK 2  
#02-02