

# TYPE 1B1

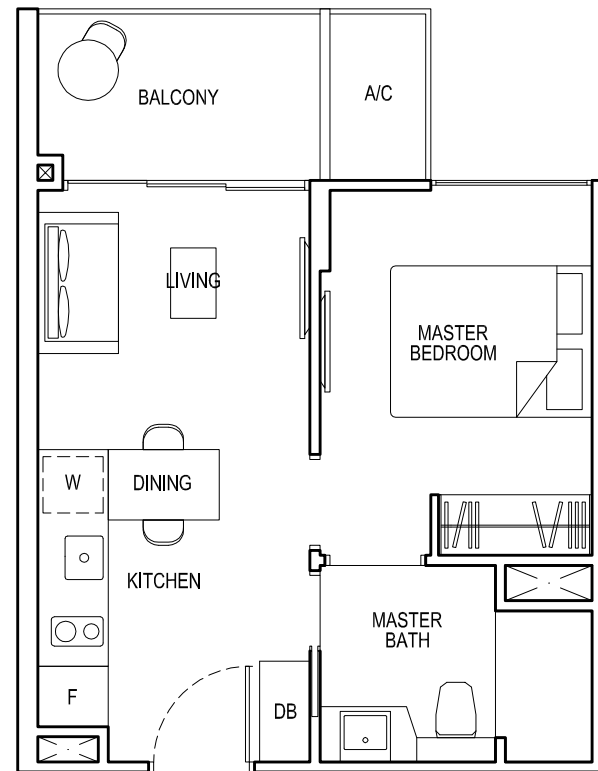
Area: 39 sq m (include 2 sq m A/C LEDGE, 5 sq m BALCONY)

Unit(s): #05-07\* TO #14-07\*

#05-08 TO #14-08

#05-09 TO #14-09

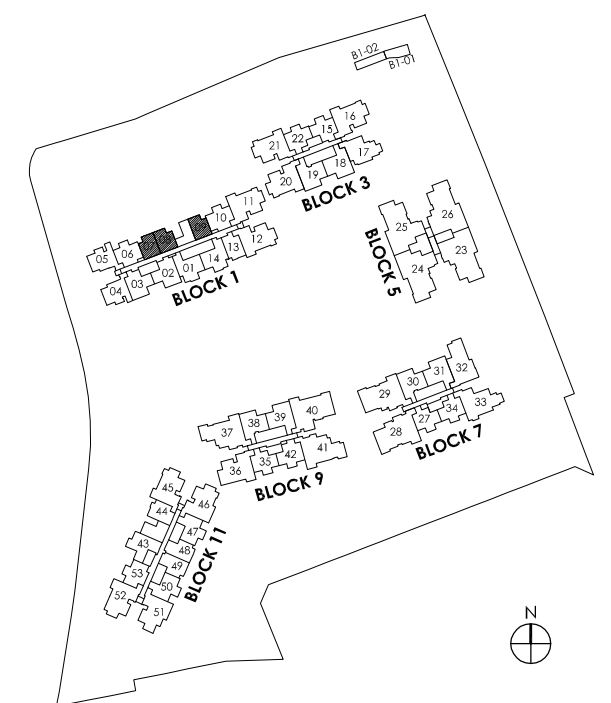
# 1 - BEDROOM



NOTE:

\* Mirror image

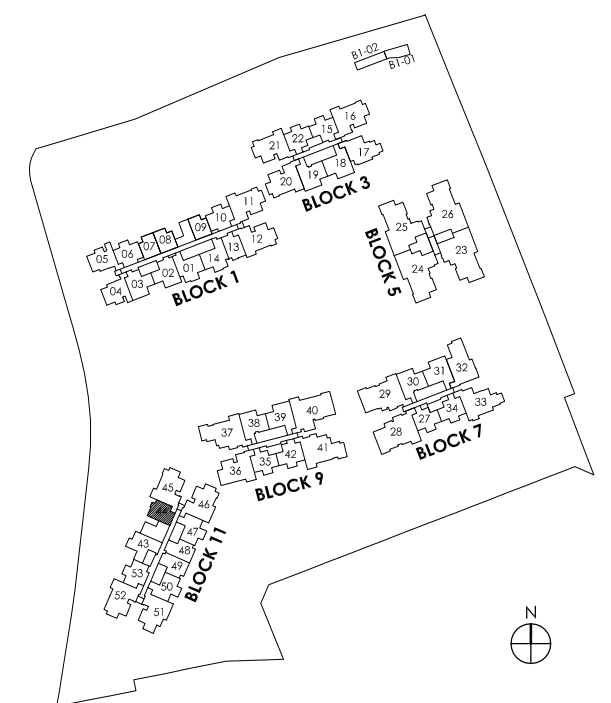
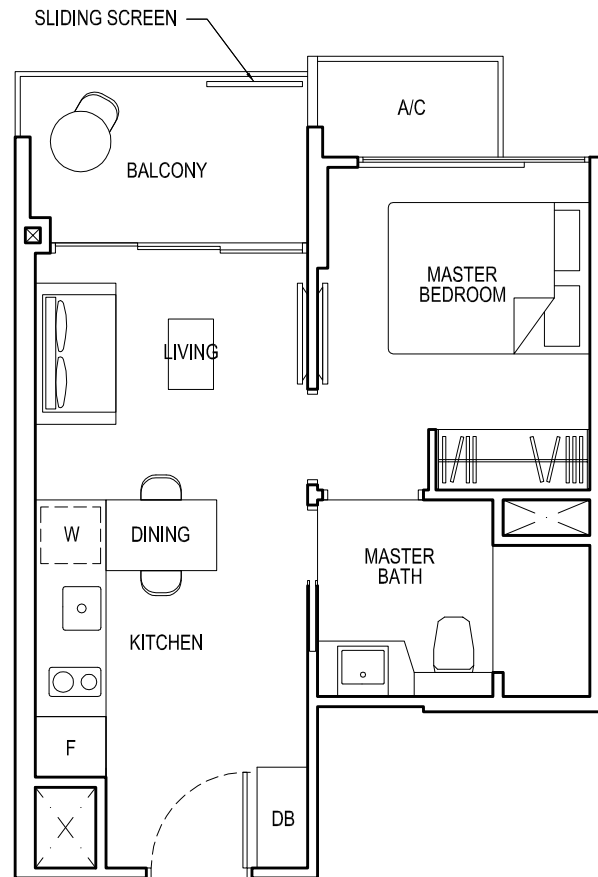
Plans are subject to change/amendments as may be required and/or approved by the Developer and/or the relevant authorities and do not form part of any offer or contract. These are not drawn to scale and are for the purpose of visual presentation only.



# TYPE 1B2

Area: 39 sq m (include 2 sq m A/C LEDGE, 5 sq m BALCONY)  
Unit(s): #02-44 TO #14-44

# 1 - BEDROOM



Plans are subject to change/amendments as may be required and/or approved by the Developer and/or the relevant authorities and do not form part of any offer or contract. These are not drawn to scale and are for the purpose of visual presentation only.

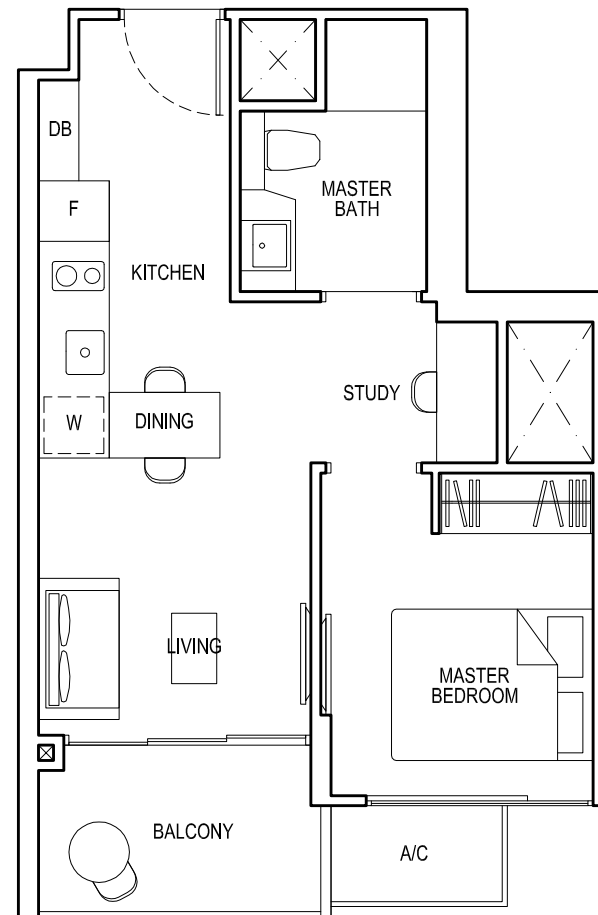
# TYPE 1S1

Area: 42 sq m (include 2 sq m A/C LEDGE, 5 sq m BALCONY)

Unit(s): #02-48 TO #14-48

#02-49\* TO #14-49\*

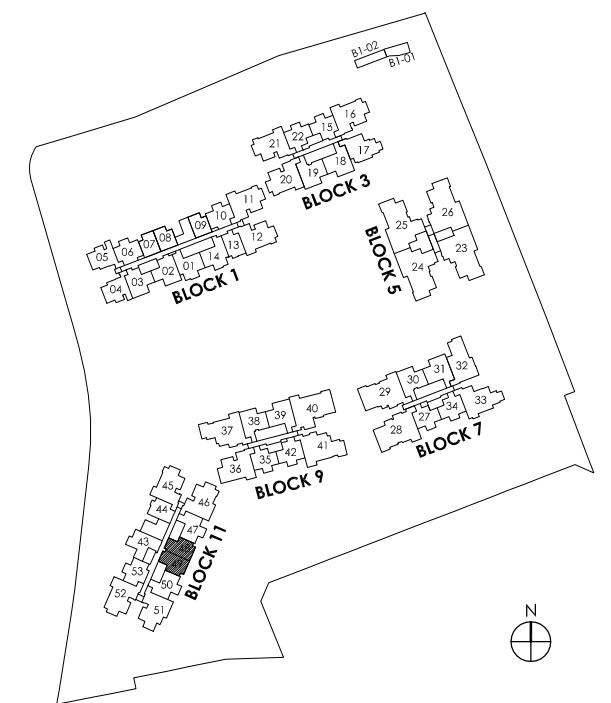
# 1 - BEDROOM + STUDY



**NOTE:**

\* Mirror image

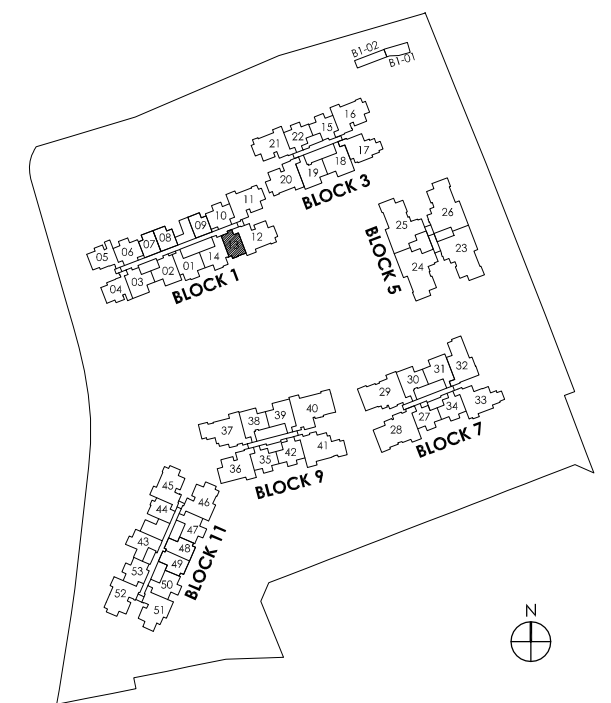
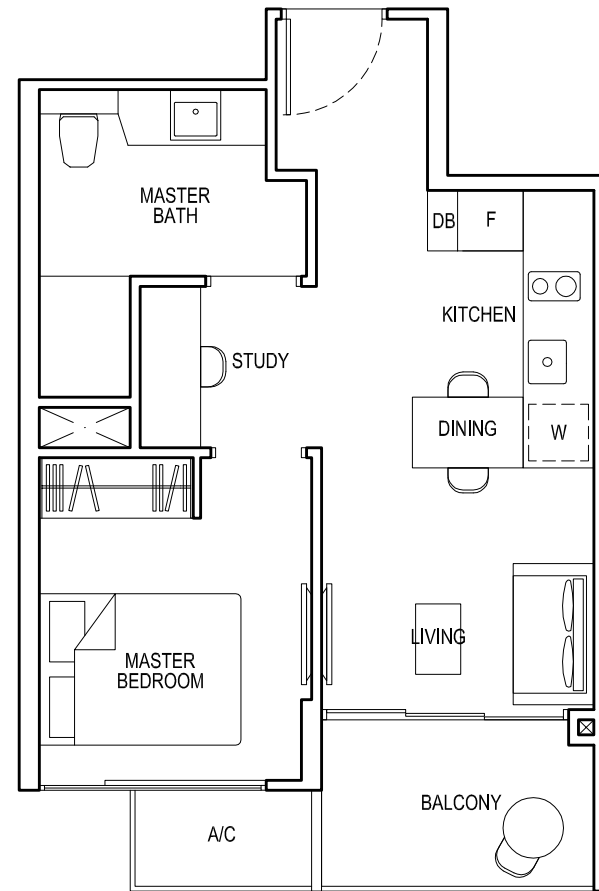
Plans are subject to change/amendments as may be required and/or approved by the Developer and/or the relevant authorities and do not form part of any offer or contract. These are not drawn to scale and are for the purpose of visual presentation only.



# TYPE 1S2

Area: 44 sq m (include 2 sq m A/C LEDGE, 5 sq m BALCONY)  
Unit(s): #02-13 TO #14-13

# 1 - BEDROOM + STUDY



Plans are subject to change/amendments as may be required and/or approved by the Developer and/or the relevant authorities and do not form part of any offer or contract. These are not drawn to scale and are for the purpose of visual presentation only.

# TYPE 2C1

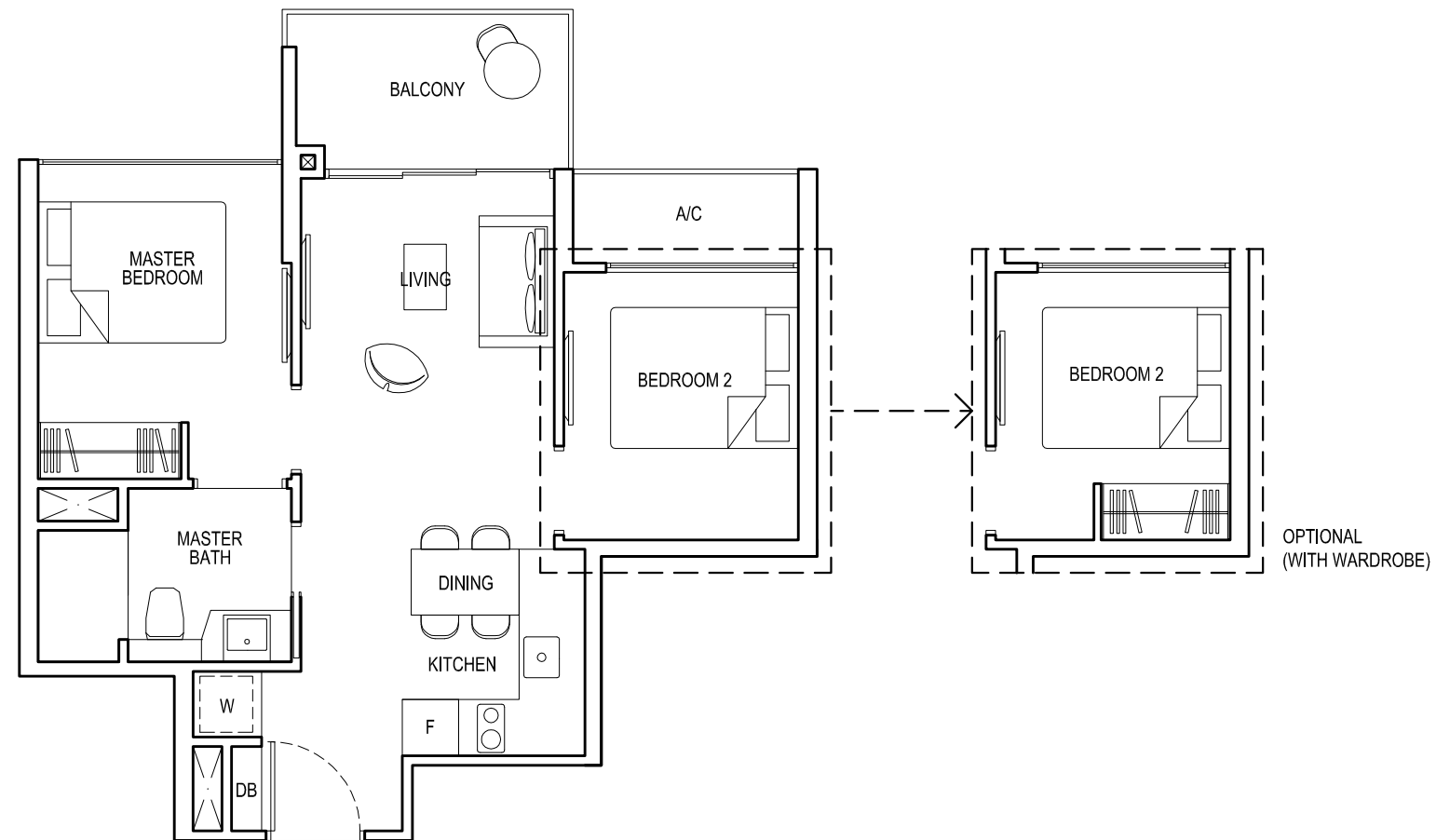
Area: 52 sq m (include 3 sq m A/C LEDGE, 5 sq m BALCONY)

Unit(s): #05-22 TO #13-22

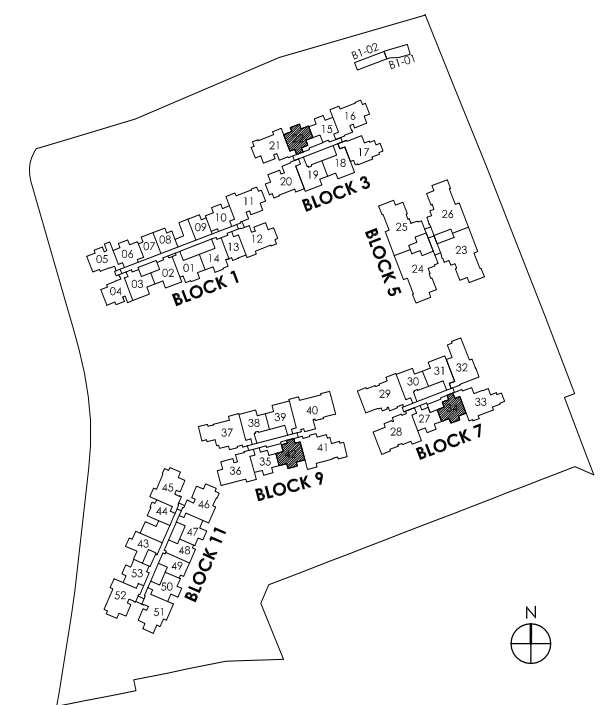
#02-34 TO #13-34

#03-42 TO #14-42

# 2 - BEDROOM COMPACT



Plans are subject to change/amendments as may be required and/or approved by the Developer and/or the relevant authorities and do not form part of any offer or contract. These are not drawn to scale and are for the purpose of visual presentation only.



# TYPE 2C1a

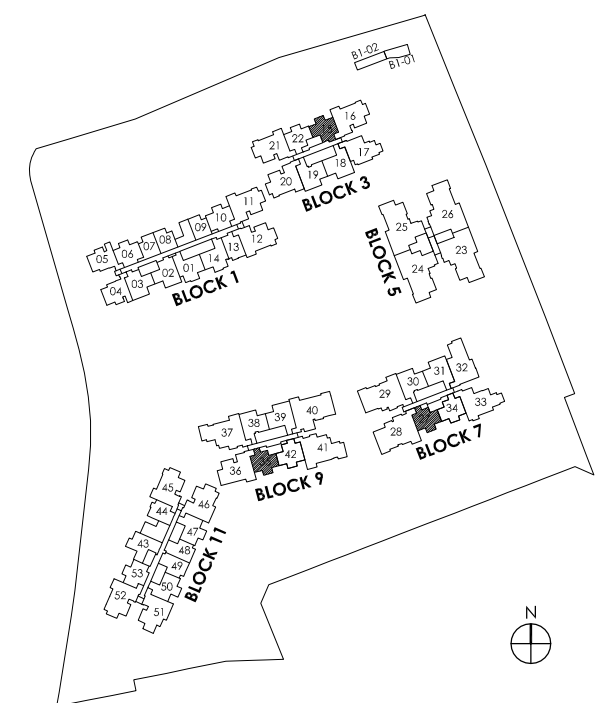
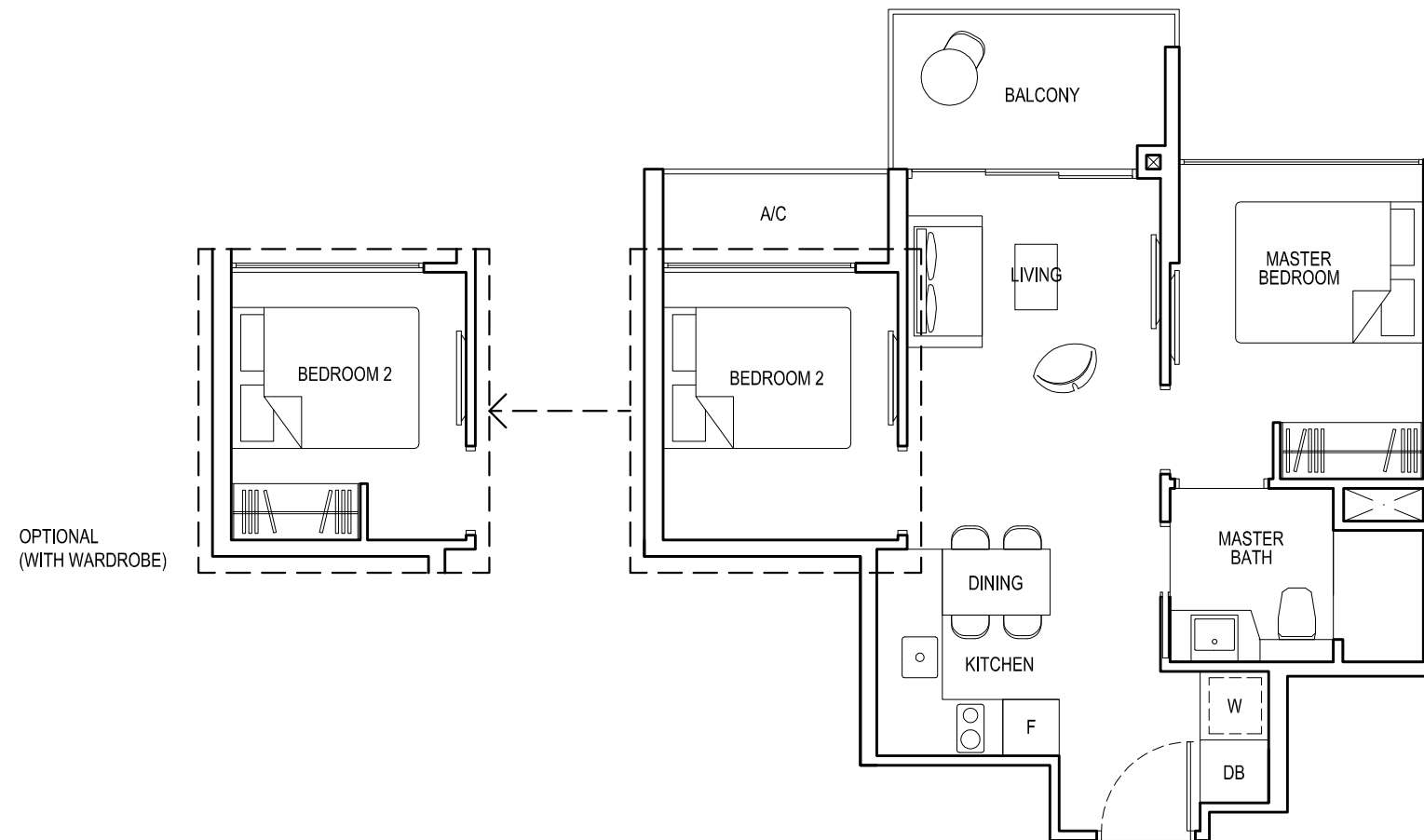
Area: 52 sq m (include 3 sq m A/C LEDGE, 5 sq m BALCONY)

Unit(s): #05-15 TO #13-15

#02-27 TO #13-27

#03-35 TO #14-35

# 2 - BEDROOM COMPACT



Plans are subject to change/amendments as may be required and/or approved by the Developer and/or the relevant authorities and do not form part of any offer or contract. These are not drawn to scale and are for the purpose of visual presentation only.

# TYPE 2C2

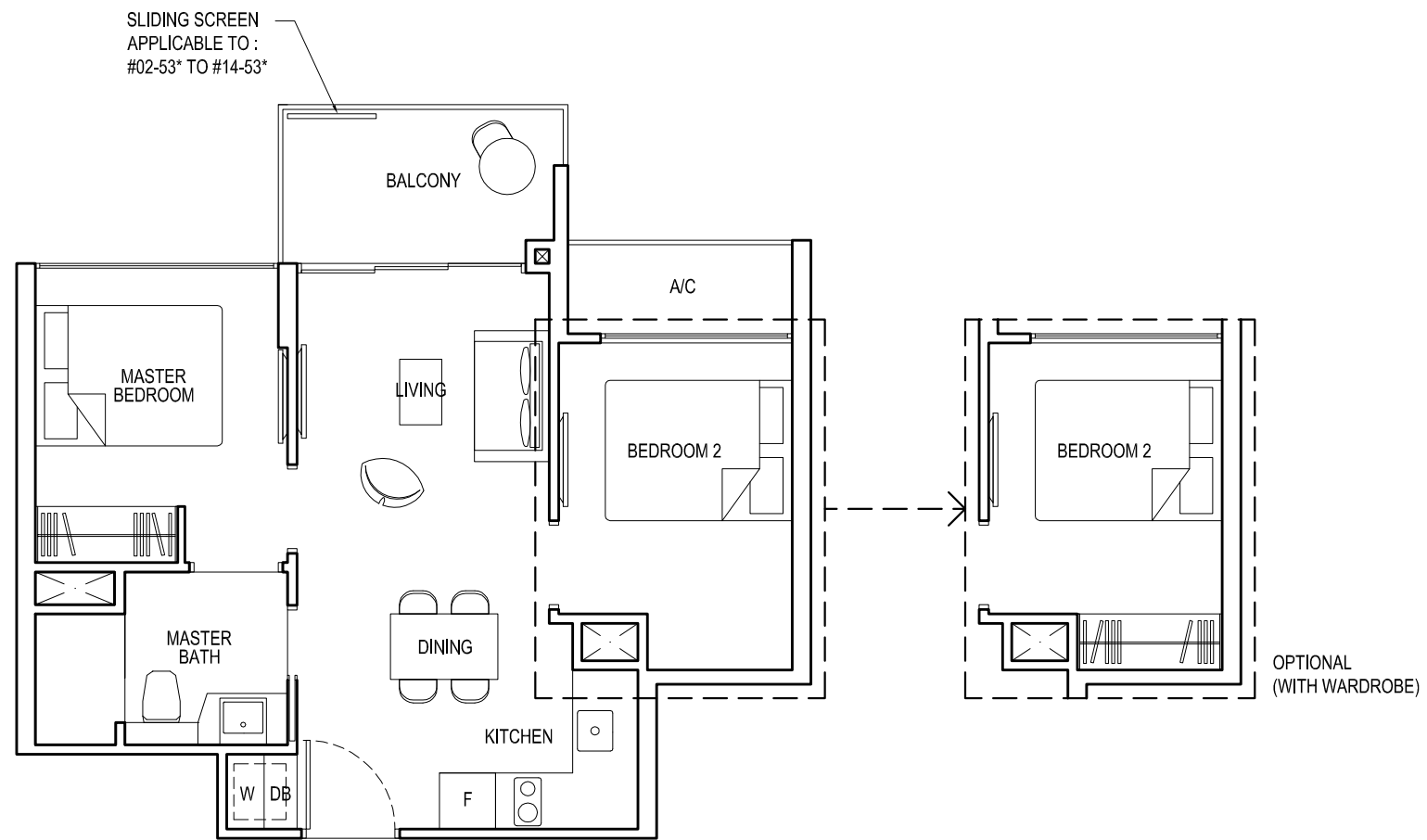
# 2 - BEDROOM COMPACT

Area: 51 sq m (include 3 sq m A/C LEDGE, 5 sq m BALCONY)

Unit(s): #05-06\* TO #14-06\*

#05-10 TO #14-10

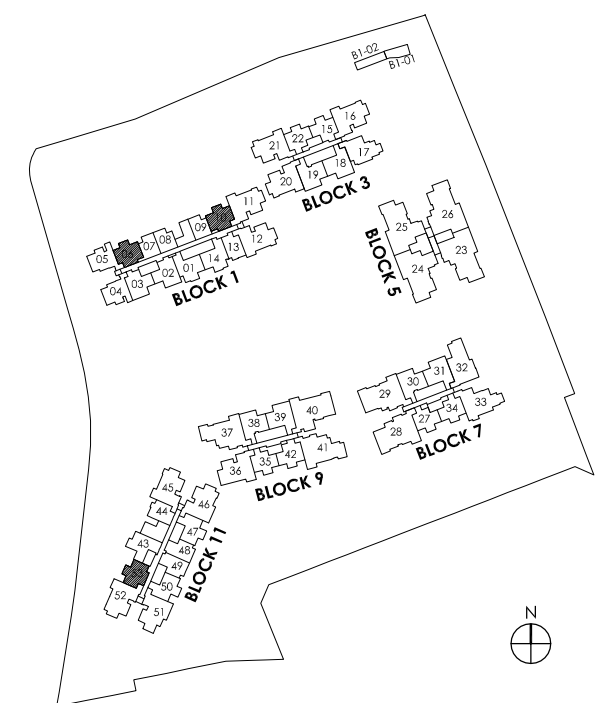
#02-53\* TO #14-53\*



## NOTE:

\* Mirror image

Plans are subject to change/amendments as may be required and/or approved by the Developer and/or the relevant authorities and do not form part of any offer or contract. These are not drawn to scale and are for the purpose of visual presentation only.



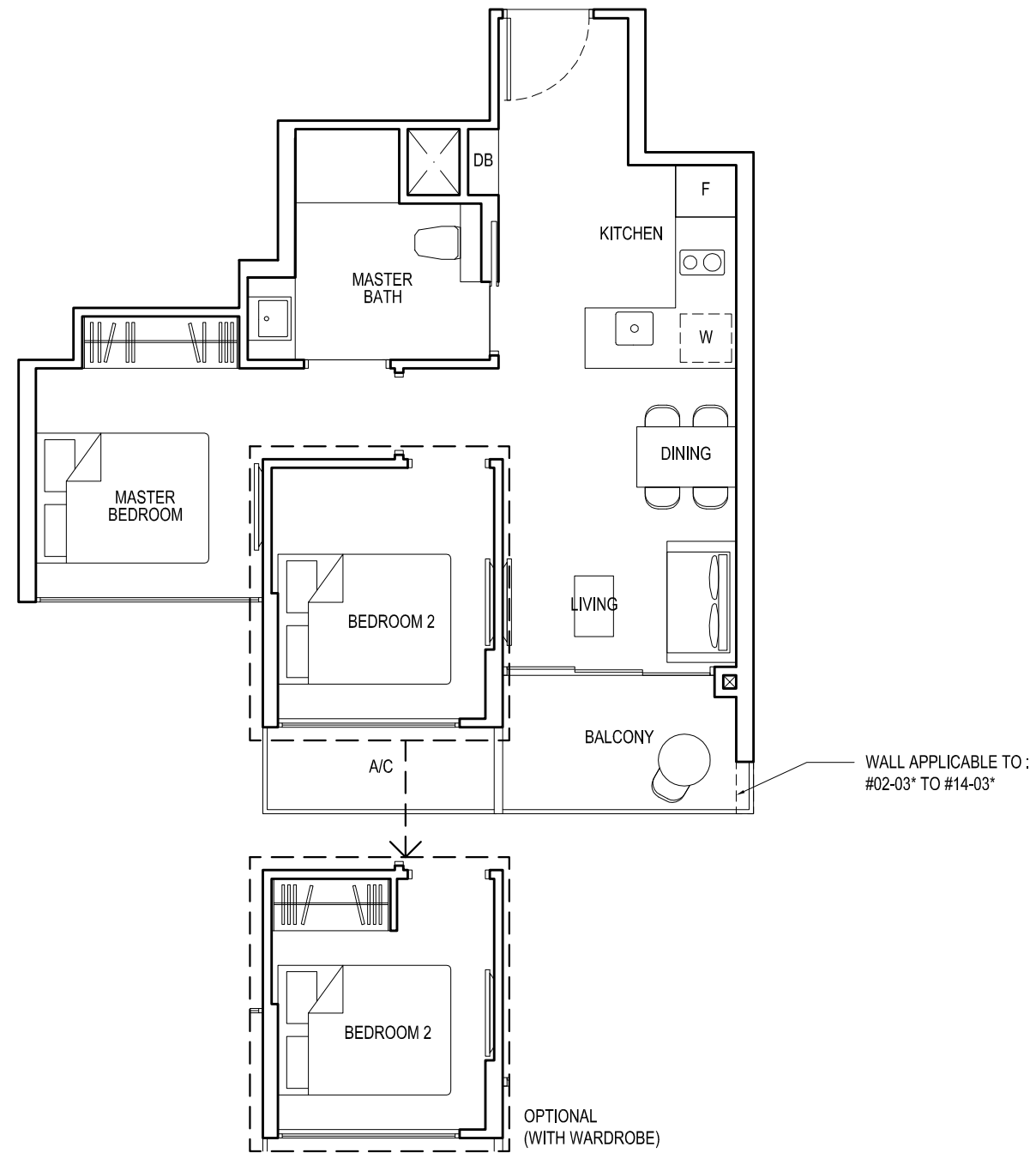
# TYPE 2C3

Area: 54 sq m (include 3 sq m A/C LEDGE, 5 sq m BALCONY)

Unit(s): #02-02 TO #14-02

#02-03\* TO #14-03\*

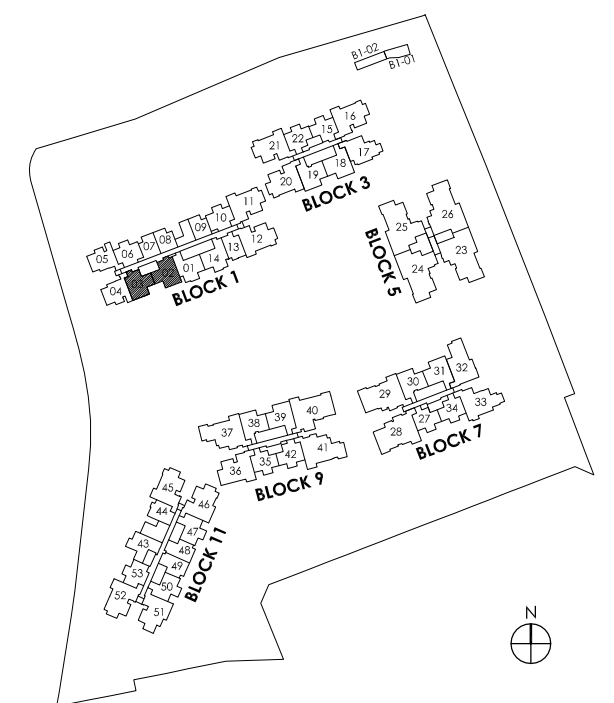
# 2 - BEDROOM COMPACT



**NOTE:**

\* Mirror image

Plans are subject to change/amendments as may be required and/or approved by the Developer and/or the relevant authorities and do not form part of any offer or contract. These are not drawn to scale and are for the purpose of visual presentation only.

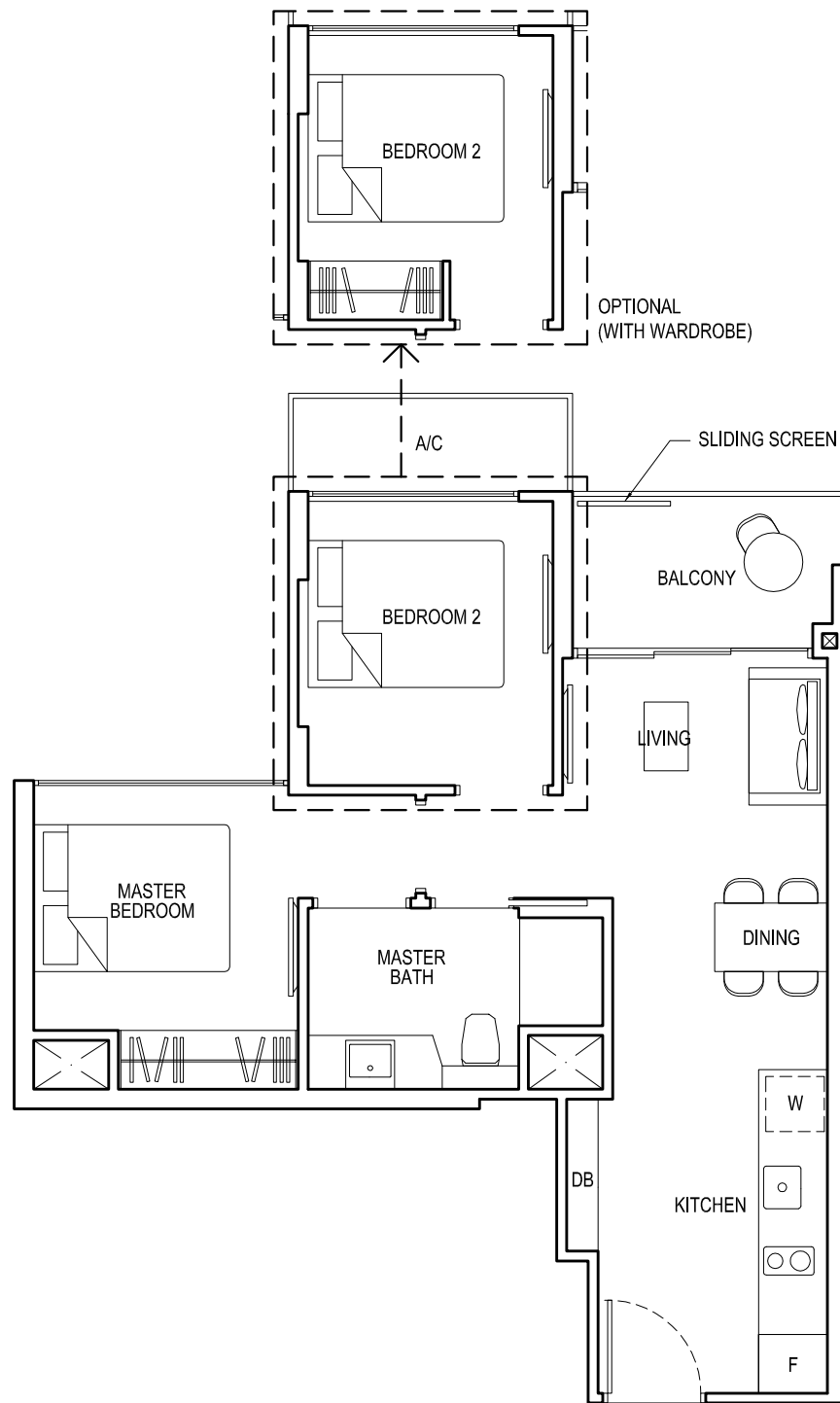




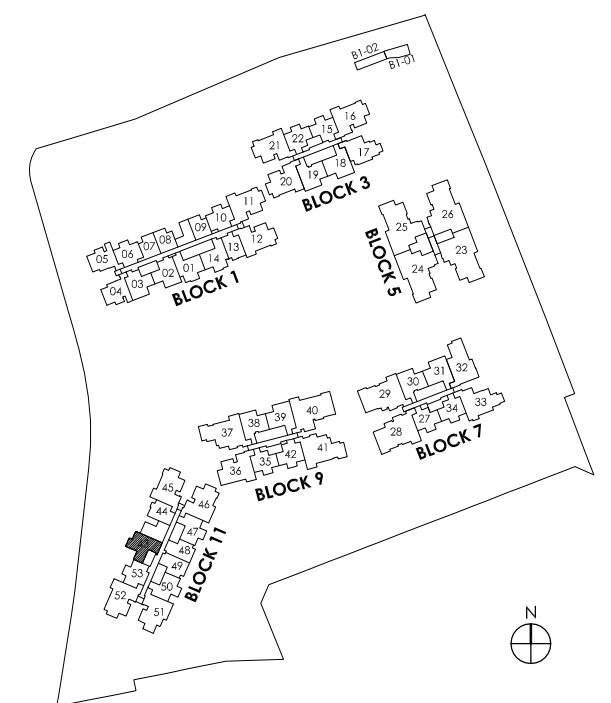
# TYPE 2C4

Area: 53 sq m (include 3 sq m A/C LEDGE, 5 sq m BALCONY)  
Unit(s): #02-43 TO #14-43

# 2 - BEDROOM COMPACT



Plans are subject to change/amendments as may be required and/or approved by the Developer and/or the relevant authorities and do not form part of any offer or contract. These are not drawn to scale and are for the purpose of visual presentation only.



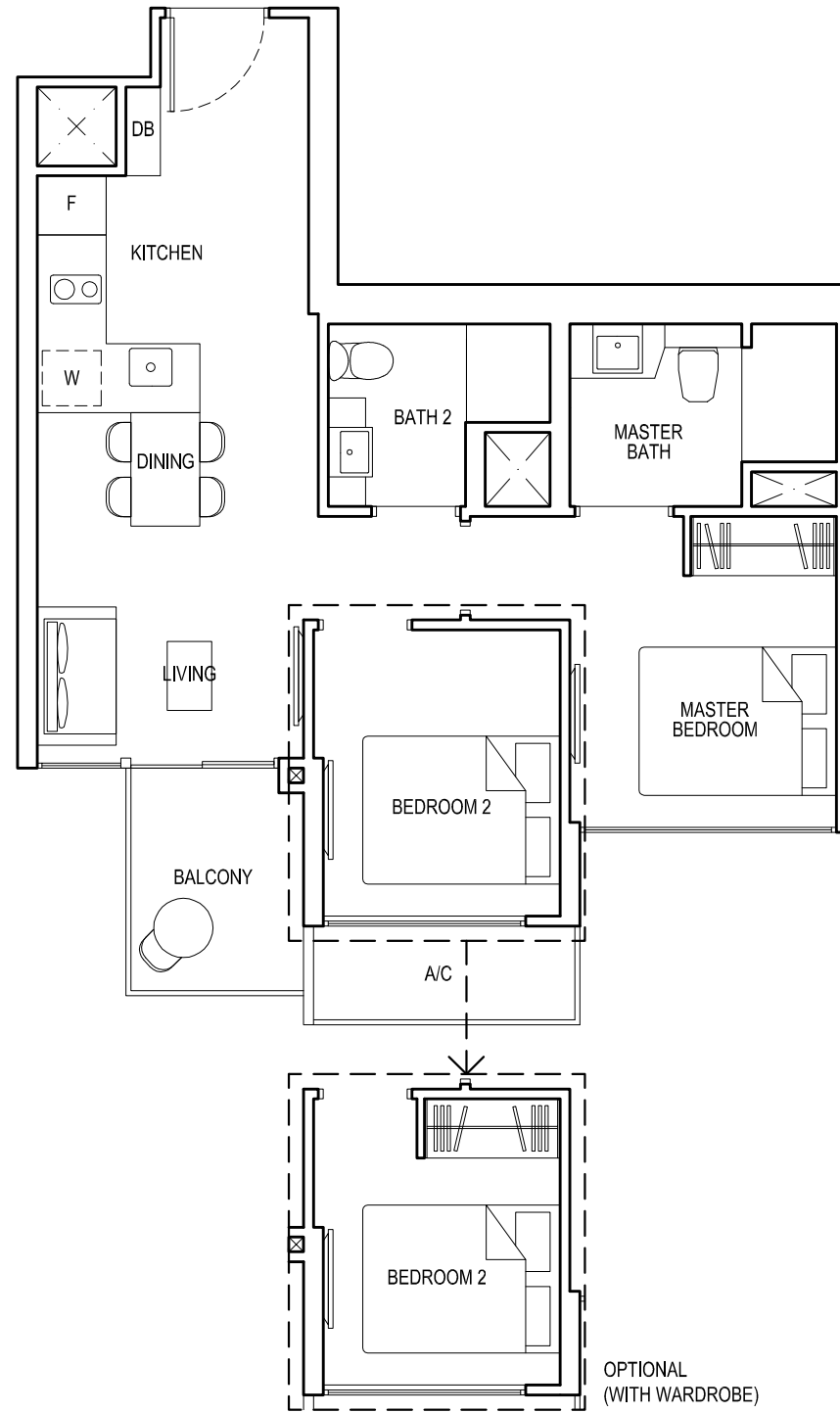
# TYPE 2D1

Area: 58 sq m (include 3 sq m A/C LEDGE, 5 sq m BALCONY)

Unit(s): #02-01 TO #14-01

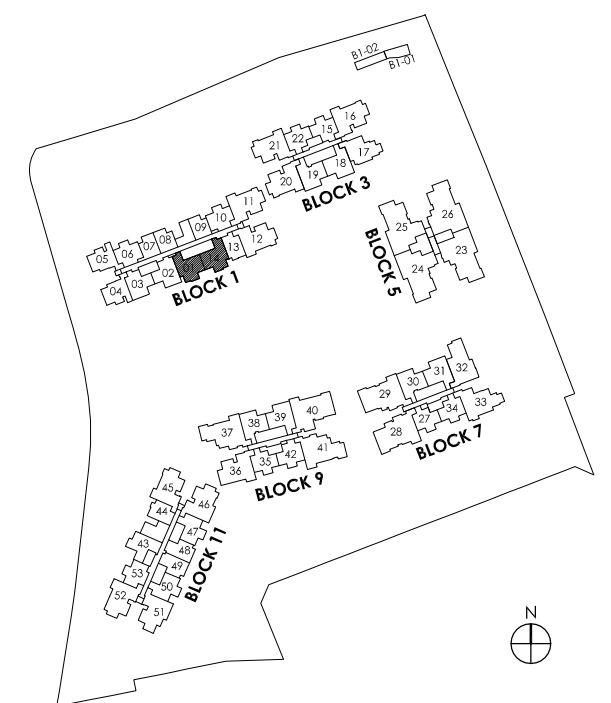
#02-14\* TO #14-14\*

# 2 - BEDROOM DELUXE



NOTE:  
\* Mirror image

Plans are subject to change/amendments as may be required and/or approved by the Developer and/or the relevant authorities and do not form part of any offer or contract. These are not drawn to scale and are for the purpose of visual presentation only.



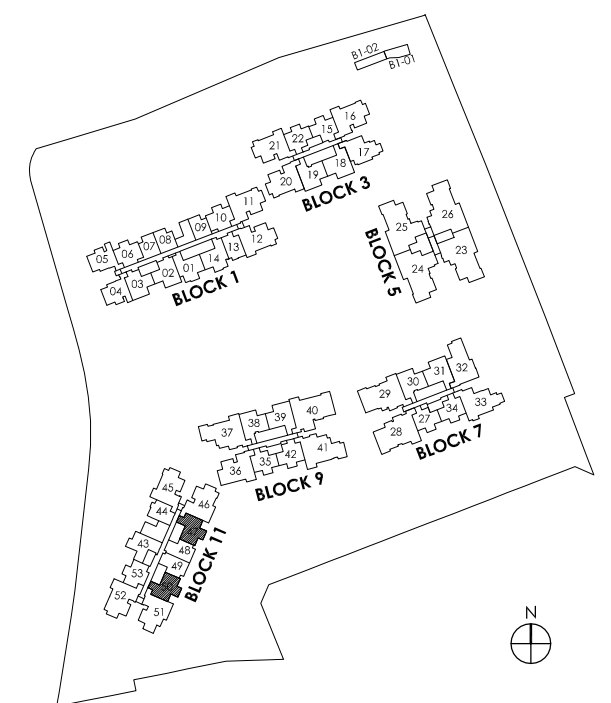
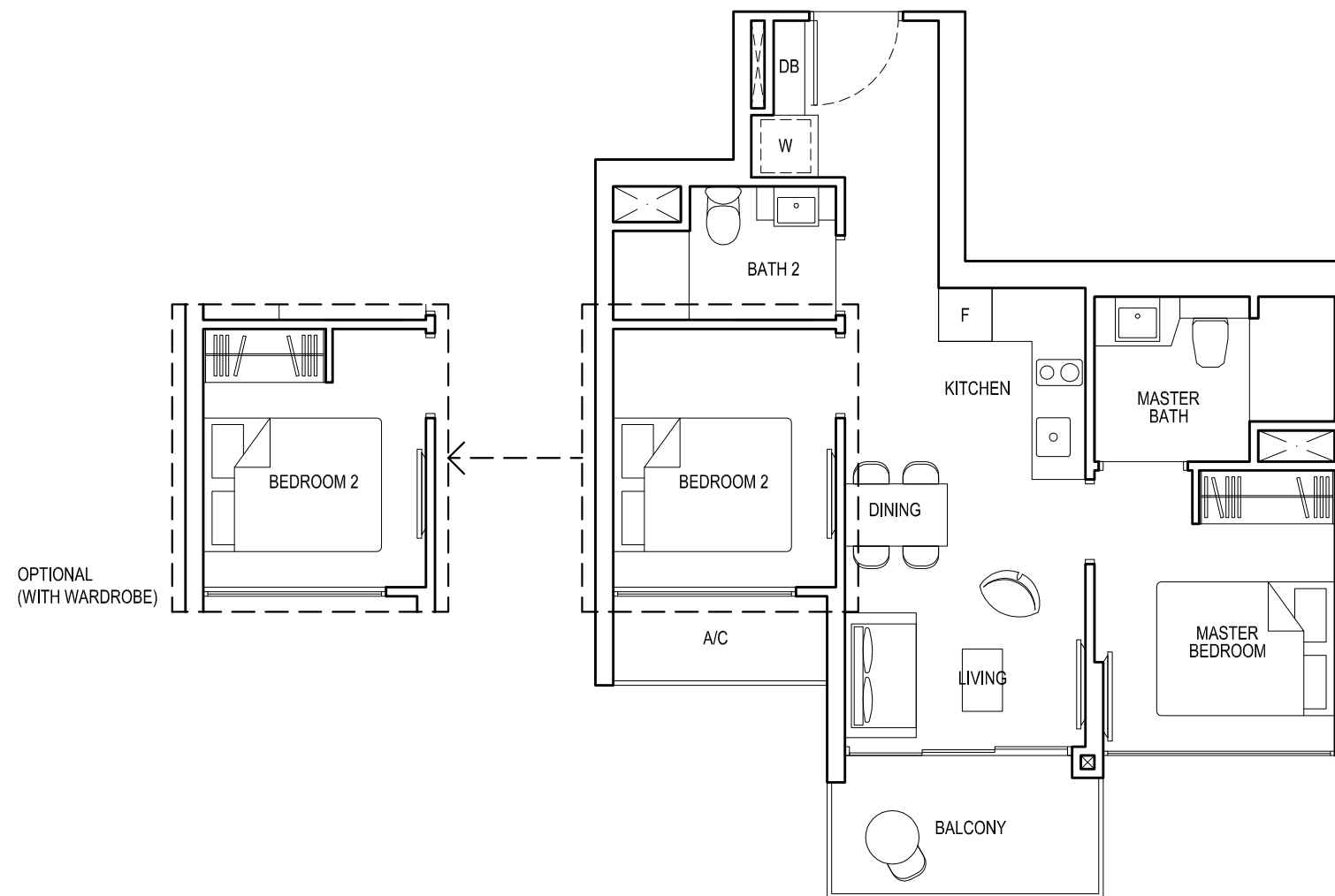
# TYPE 2D2

Area: 55 sq m (include 3 sq m A/C LEDGE, 5 sq m BALCONY)

Unit(s): #02-47\* TO #14-47\*

#02-50 TO #14-50

# 2 - BEDROOM DELUXE



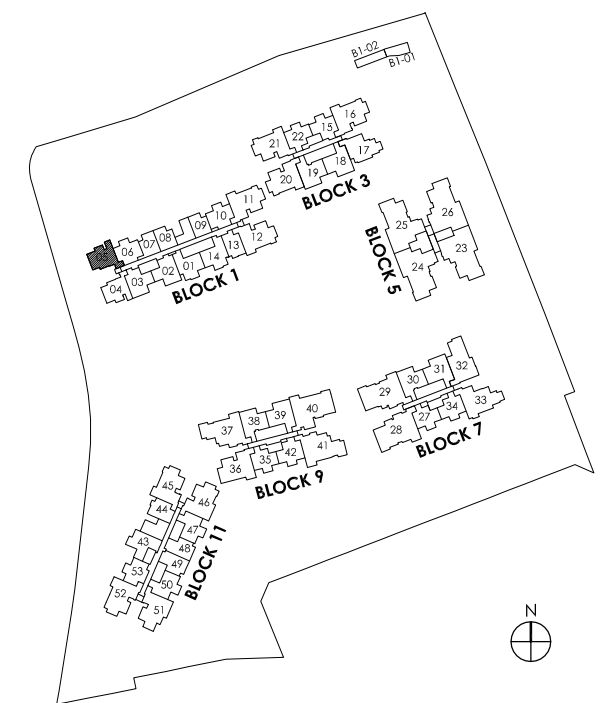
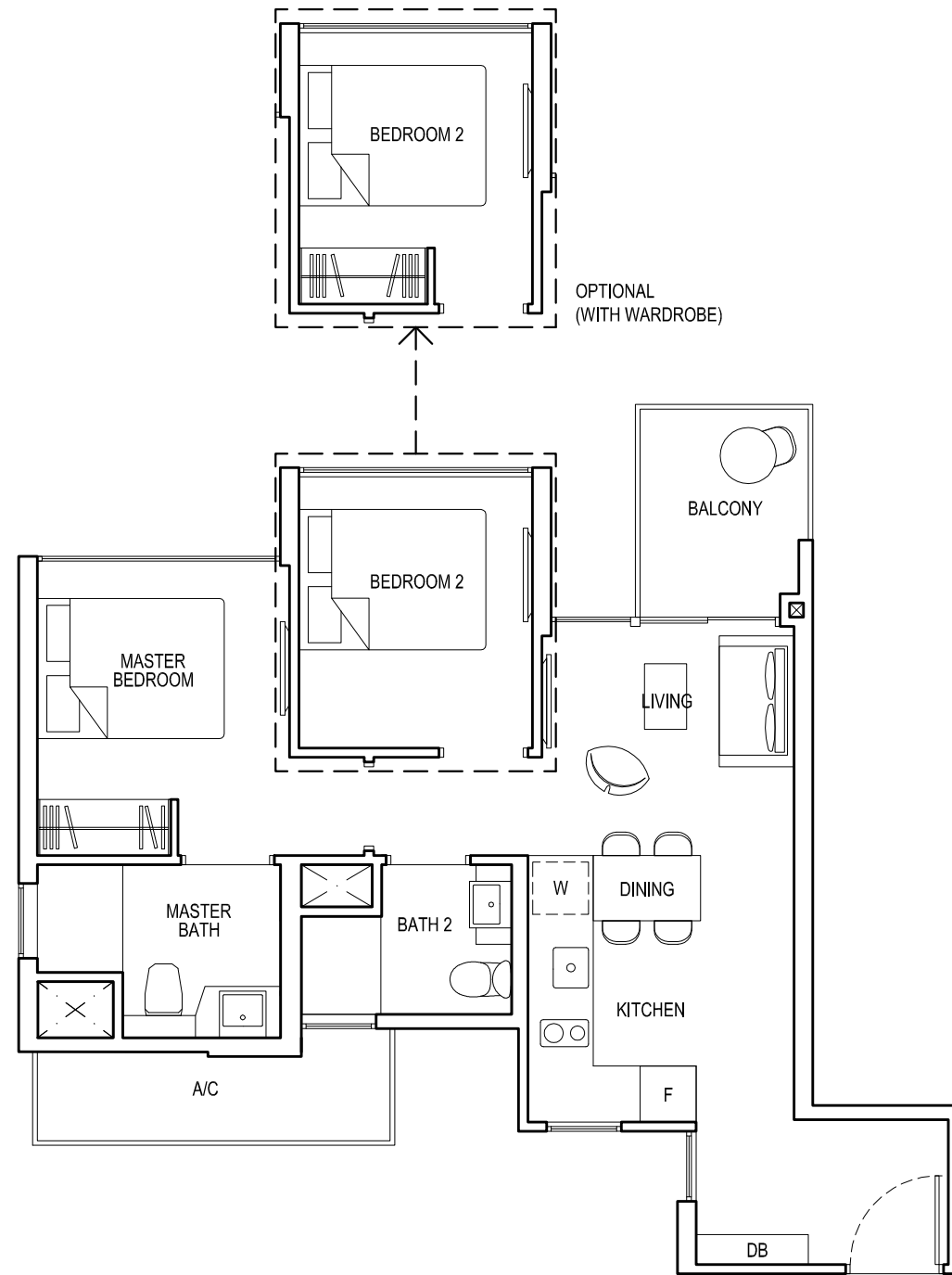
NOTE:  
\* Mirror image

Plans are subject to change/amendments as may be required and/or approved by the Developer and/or the relevant authorities and do not form part of any offer or contract. These are not drawn to scale and are for the purpose of visual presentation only.

# TYPE 2D3

Area: 58 sq m (include 5 sq m A/C LEDGE, 4 sq m BALCONY)  
Unit(s): #08-05 TO #14-05

# 2 - BEDROOM DELUXE

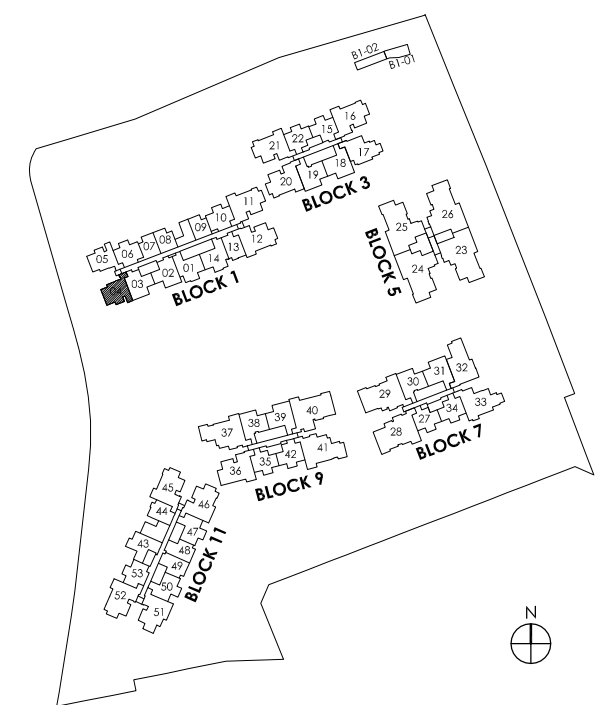
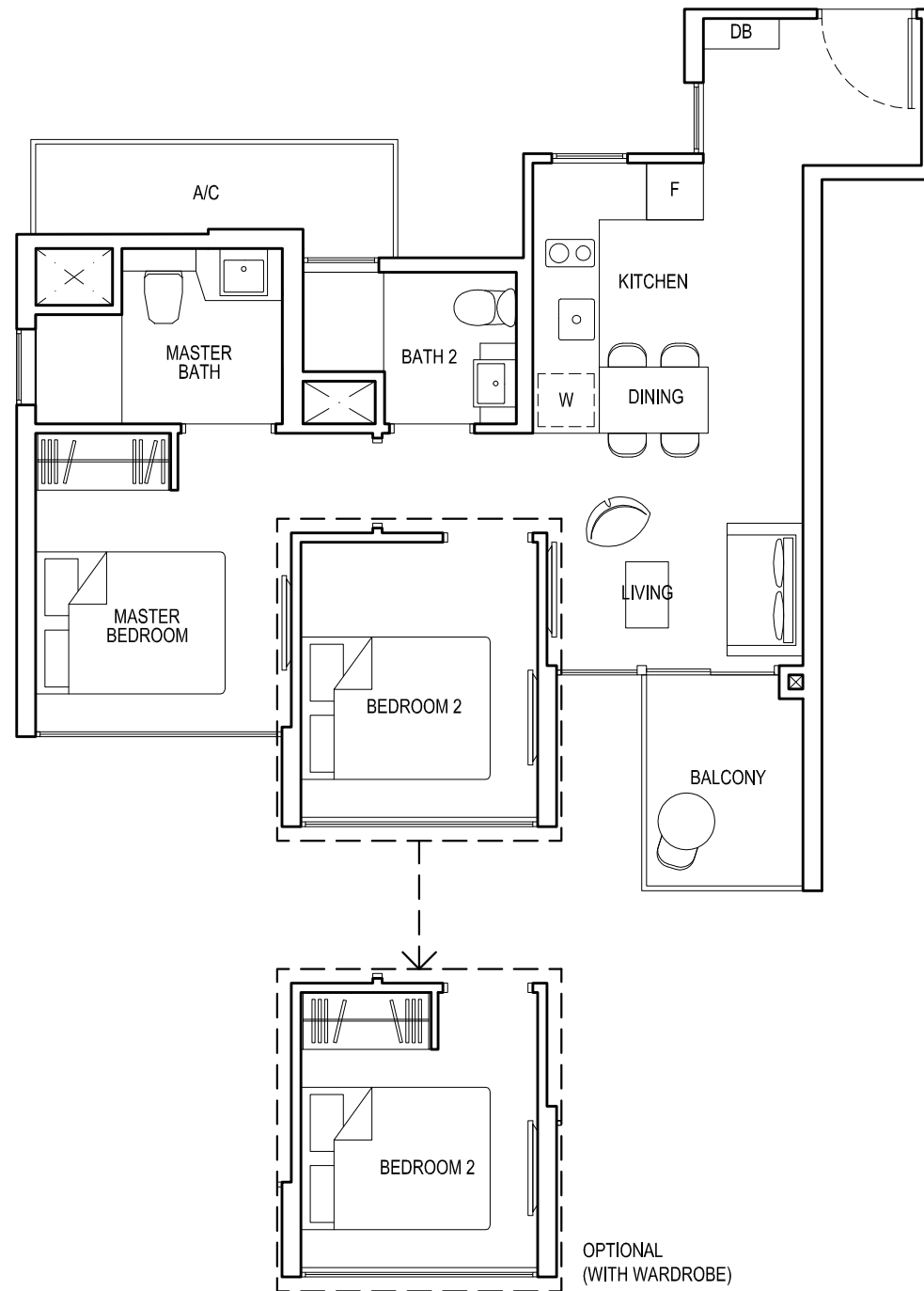


Plans are subject to change/amendments as may be required and/or approved by the Developer and/or the relevant authorities and do not form part of any offer or contract. These are not drawn to scale and are for the purpose of visual presentation only.

# TYPE 2D3a

Area: 58 sq m (include 5 sq m A/C LEDGE, 4 sq m BALCONY)  
Unit(s): #02-04 TO #14-04

# 2 - BEDROOM DELUXE



Plans are subject to change/amendments as may be required and/or approved by the Developer and/or the relevant authorities and do not form part of any offer or contract. These are not drawn to scale and are for the purpose of visual presentation only.

# TYPE 2S1

Area: 62 sq m (include 3 sq m A/C LEDGE, 5 sq m BALCONY)

Unit(s): #02-18 TO #13-18

#02-19\* TO #13-19\*

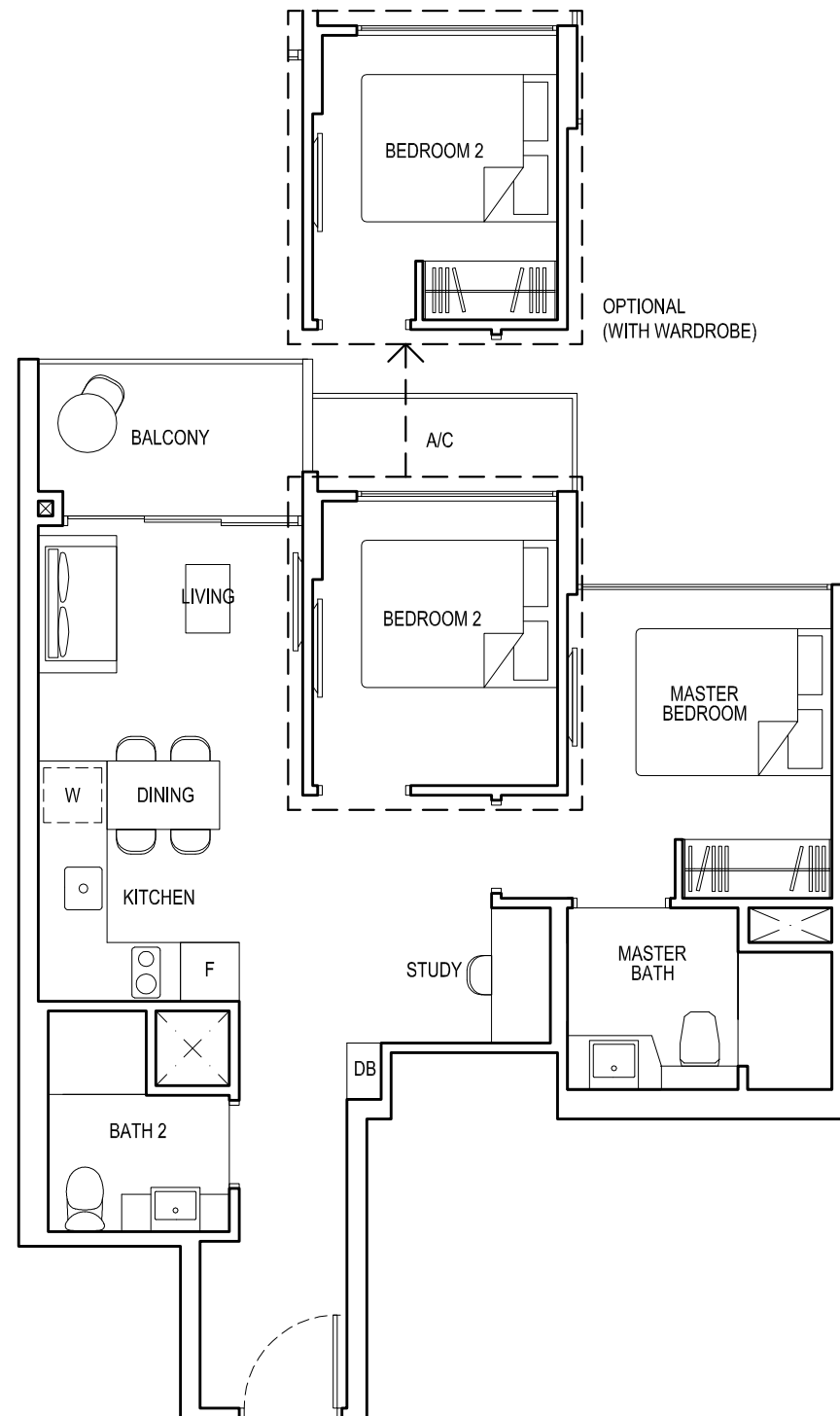
#02-30 TO #13-30

#02-31\* TO #13-31\*

#02-38 TO #14-38

#02-39\* TO #14-39\*

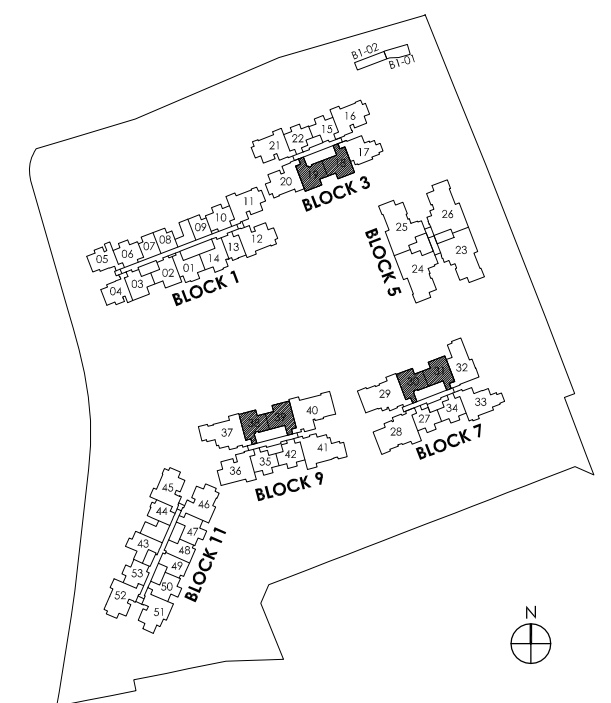
# 2 - BEDROOM + STUDY



NOTE:

\* Mirror image

Plans are subject to change/amendments as may be required and/or approved by the Developer and/or the relevant authorities and do not form part of any offer or contract. These are not drawn to scale and are for the purpose of visual presentation only.



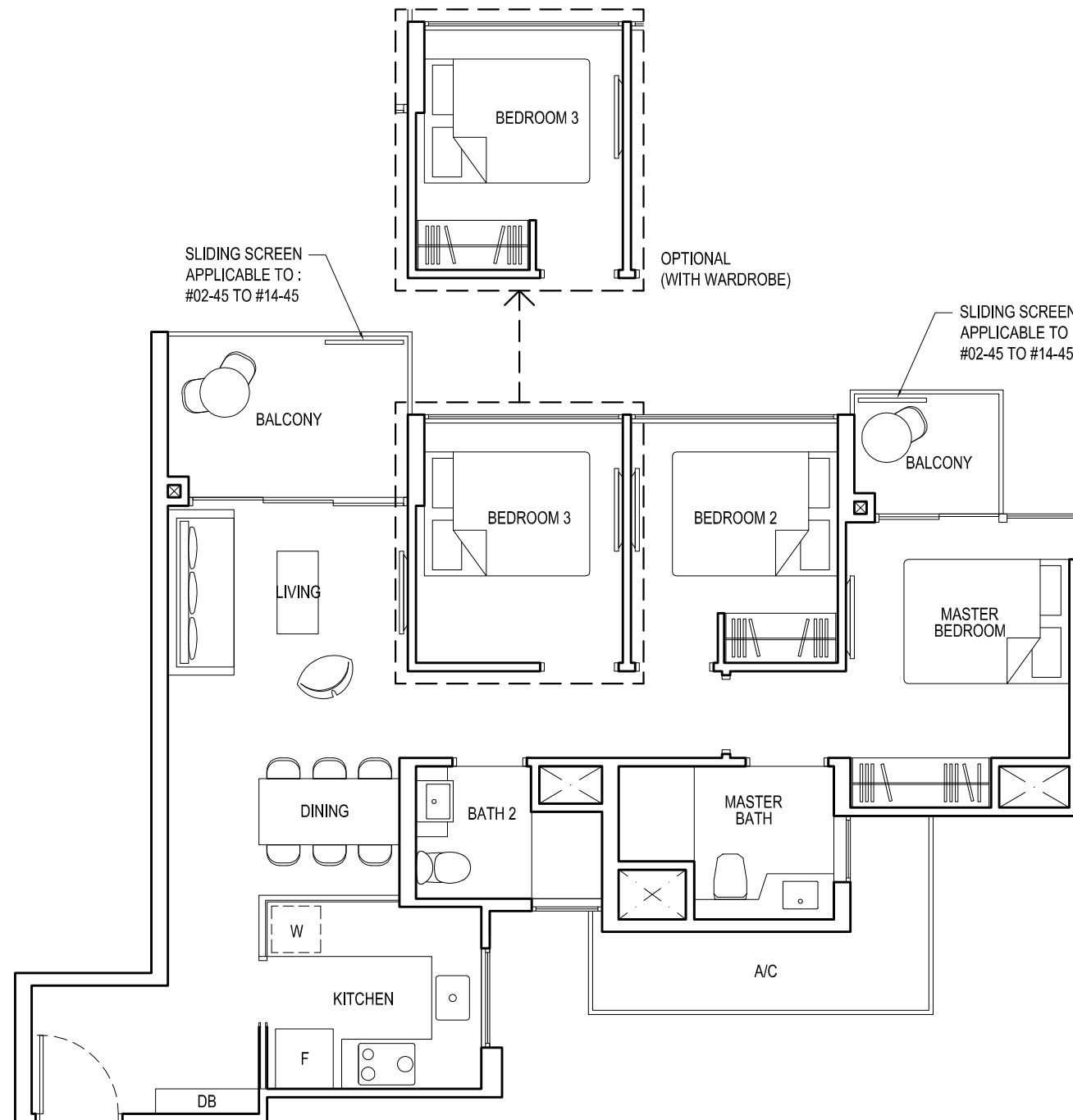
# TYPE 3C1

Area: 82 sq m (include 6 sq m A/C LEDGE, 9 sq m BALCONY)

Unit(s): #02-12\* TO #14-12\*

#02-45 TO #14-45

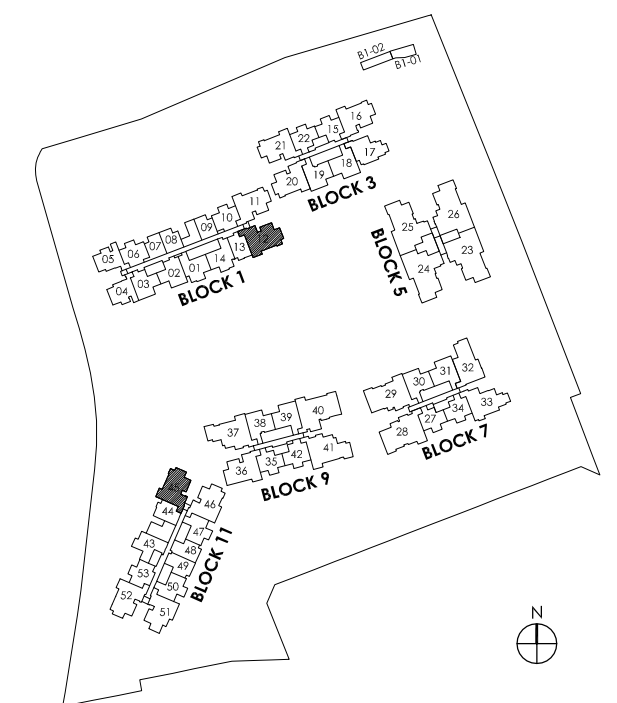
# 3 - BEDROOM COMPACT



NOTE:

\* Mirror image

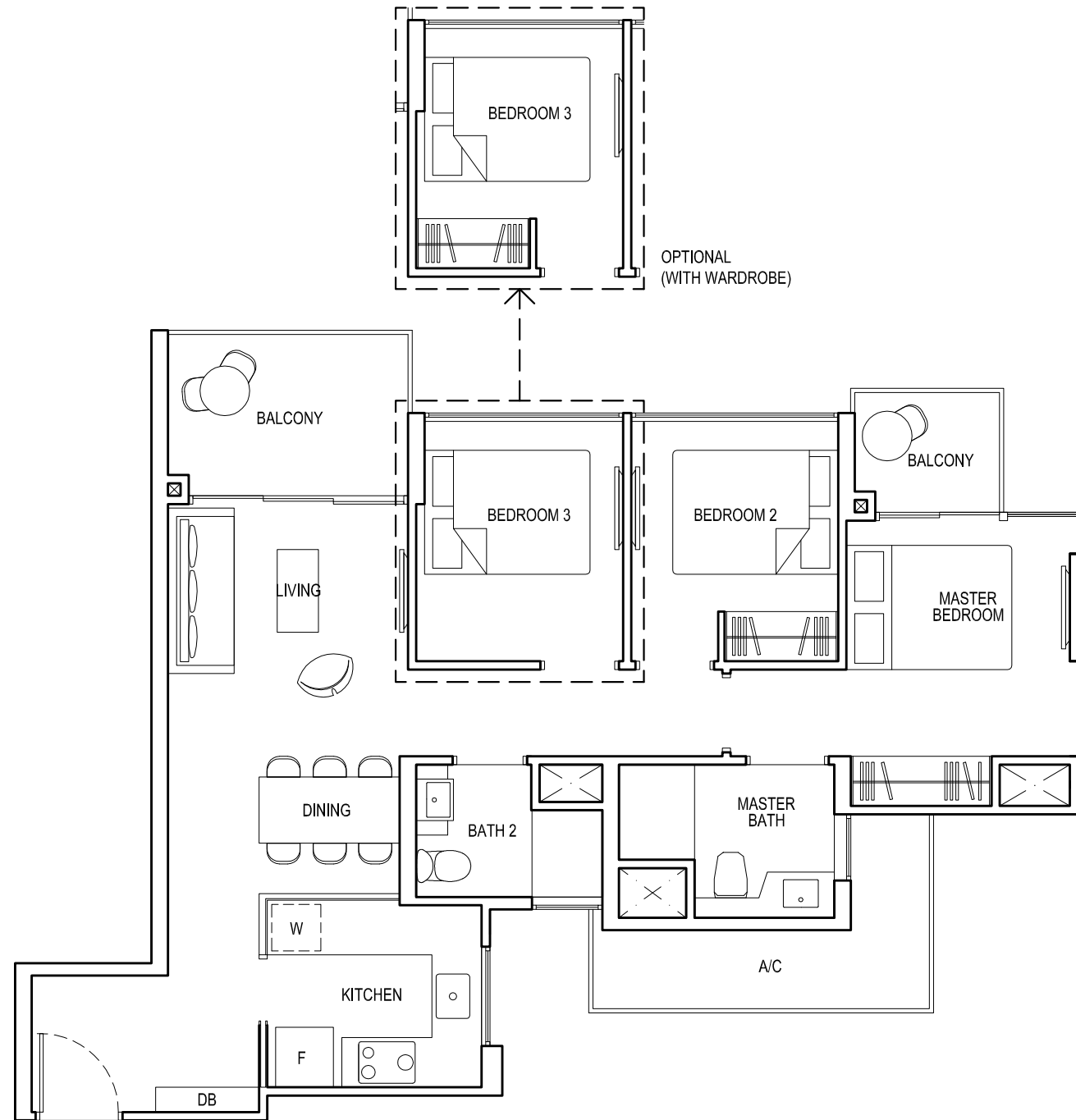
Plans are subject to change/amendments as may be required and/or approved by the Developer and/or the relevant authorities and do not form part of any offer or contract. These are not drawn to scale and are for the purpose of visual presentation only.



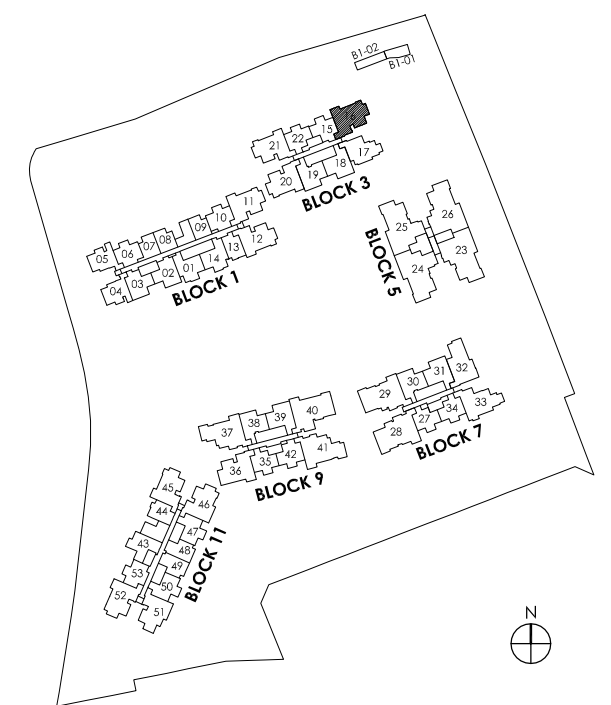
# TYPE 3C1a

Area: 83 sq m (include 6 sq m A/C LEDGE, 9 sq m BALCONY)  
Unit(s): #05-16 TO #13-16

# 3 - BEDROOM COMPACT



Plans are subject to change/amendments as may be required and/or approved by the Developer and/or the relevant authorities and do not form part of any offer or contract. These are not drawn to scale and are for the purpose of visual presentation only.

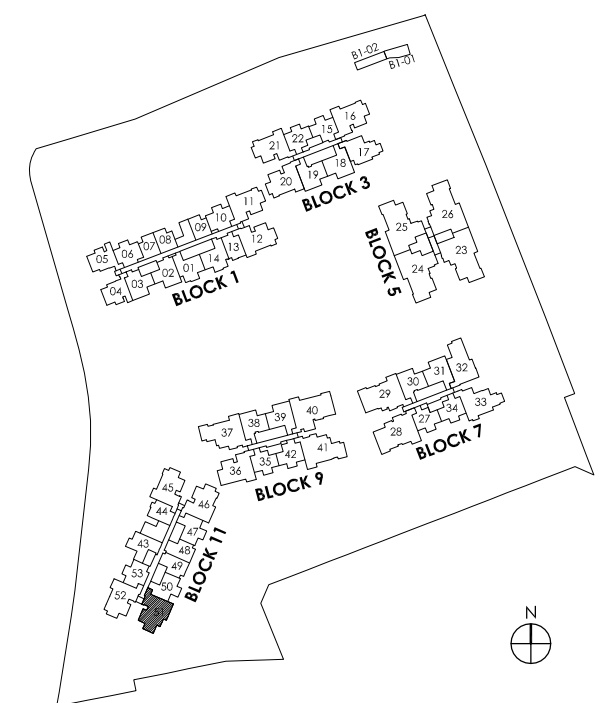
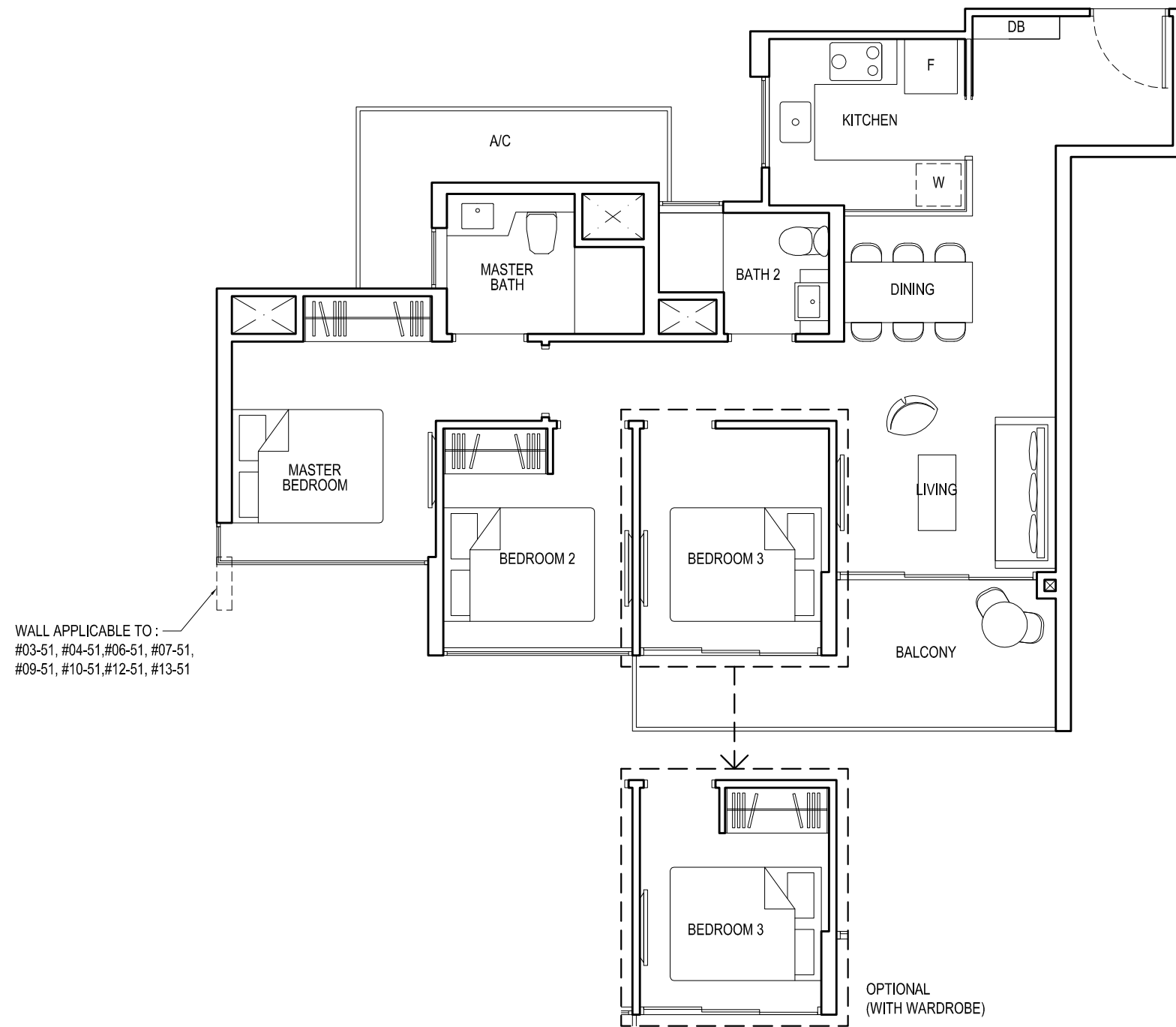




# TYPE 3C1b

Area: 82 sq m (include 6 sq m A/C LEDGE, 9 sq m BALCONY)  
Unit(s): #03-51 TO #14-51

# 3 - BEDROOM COMPACT



Plans are subject to change/amendments as may be required and/or approved by the Developer and/or the relevant authorities and do not form part of any offer or contract. These are not drawn to scale and are for the purpose of visual presentation only.

# TYPE 3C1c

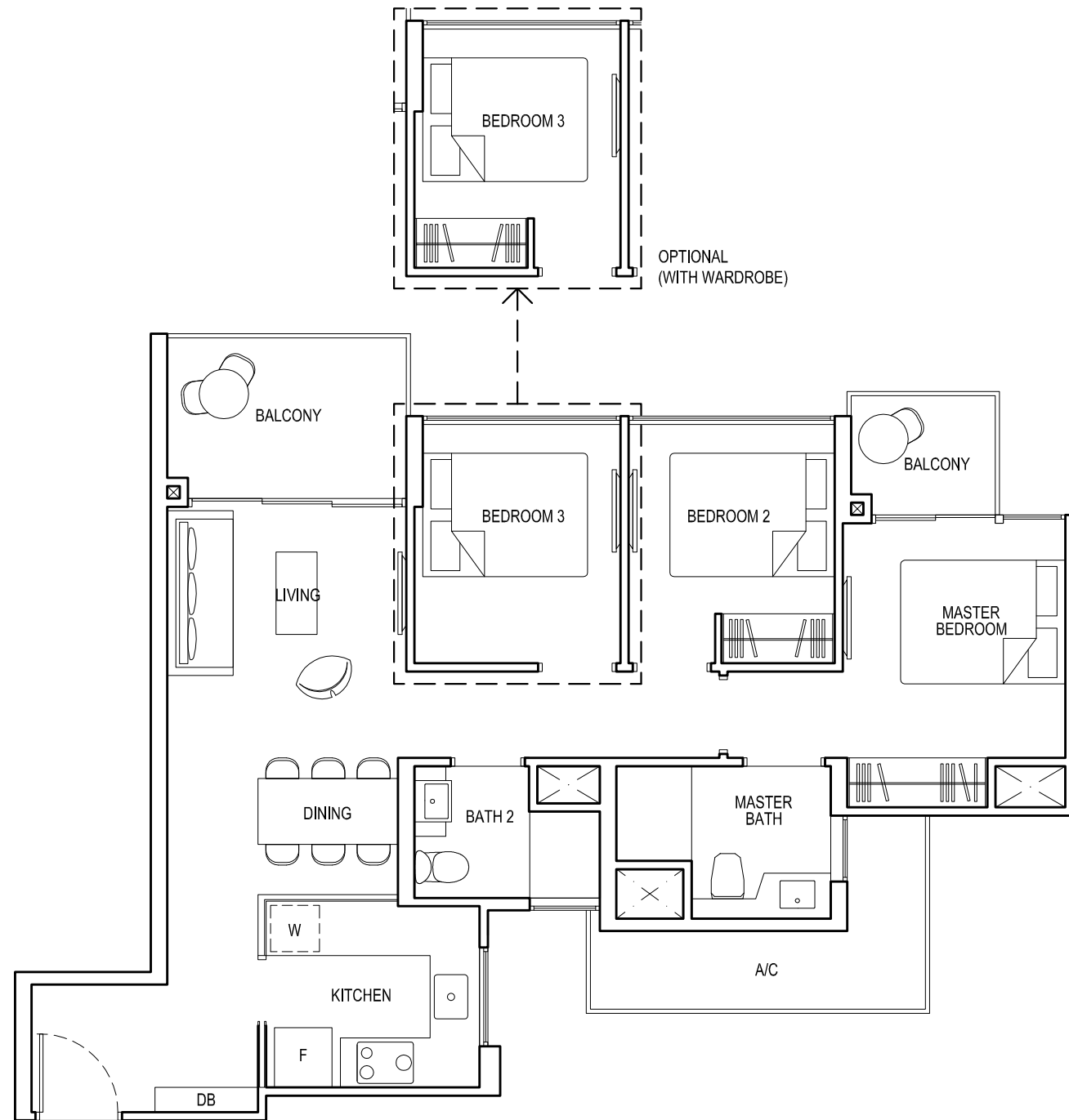
Area: 83 sq m (include 6 sq m A/C LEDGE, 9 sq m BALCONY)

Unit(s): #05-11 TO #14-11

#02-20 TO #13-20

#05-21\* TO #13-21\*

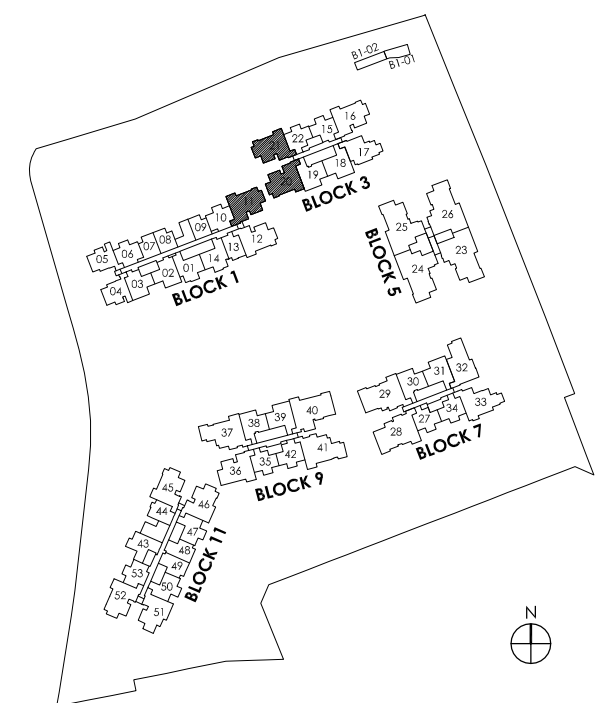
# 3 - BEDROOM COMPACT



NOTE:

\* Mirror image

Plans are subject to change/amendments as may be required and/or approved by the Developer and/or the relevant authorities and do not form part of any offer or contract. These are not drawn to scale and are for the purpose of visual presentation only.

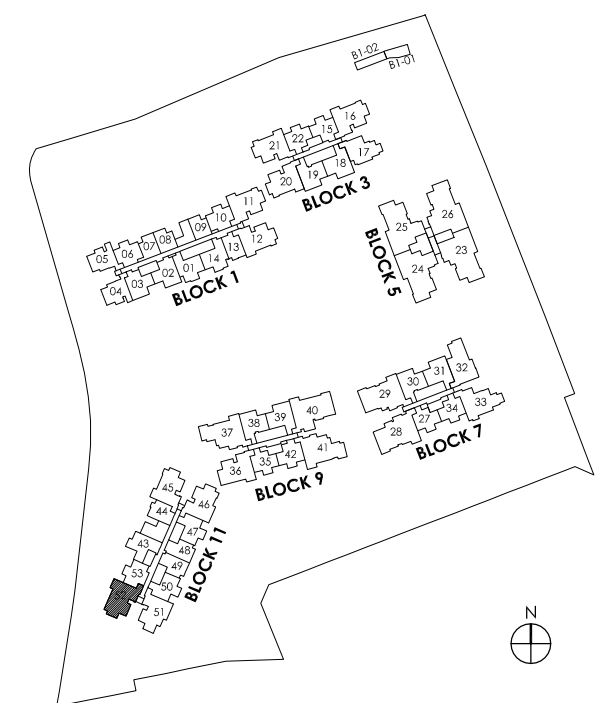
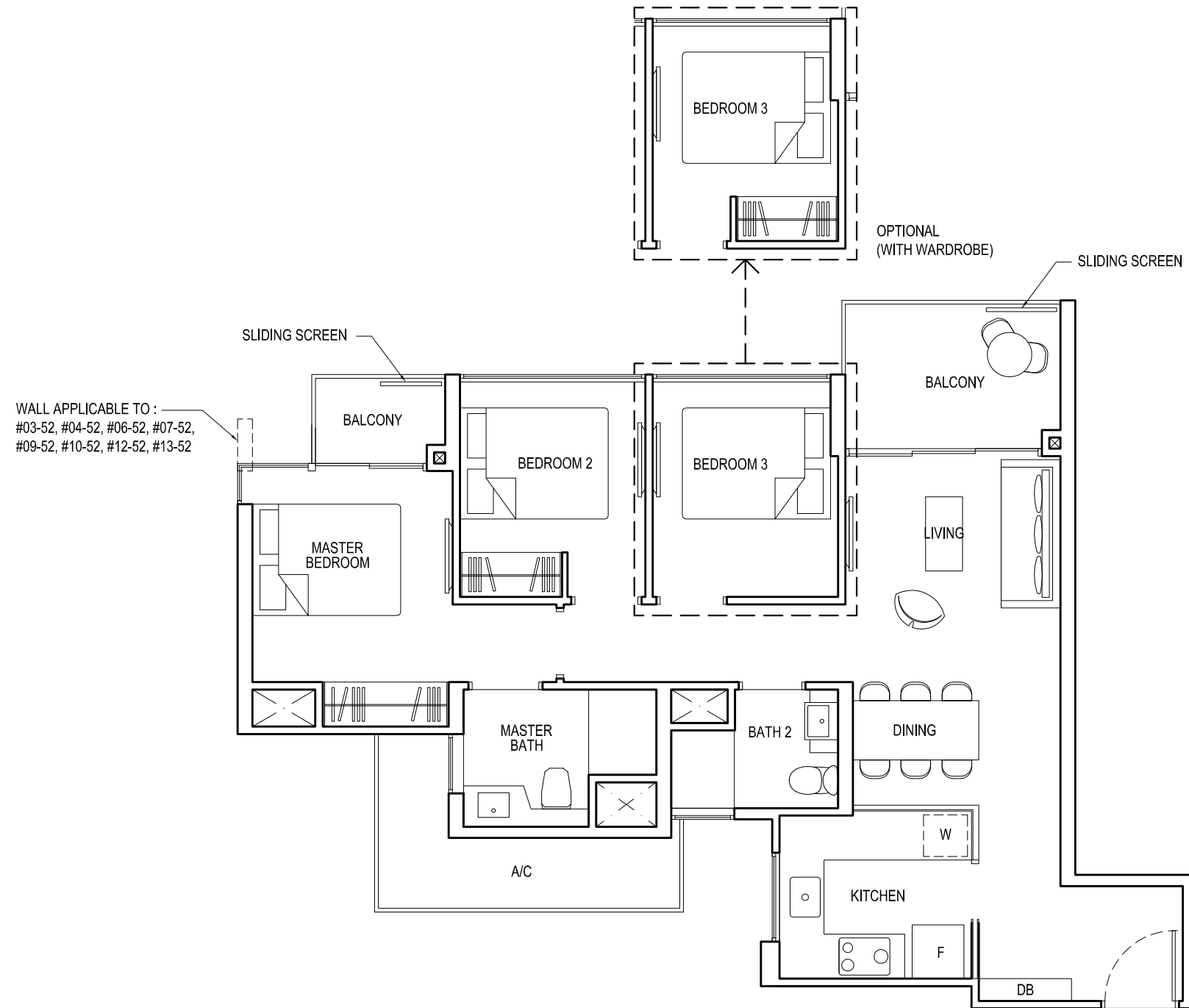




# TYPE 3C1e

Area: 82 sq m (include 6 sq m A/C LEDGE, 9 sq m BALCONY)  
Unit(s): #03-52 TO #14-52

# 3 - BEDROOM COMPACT

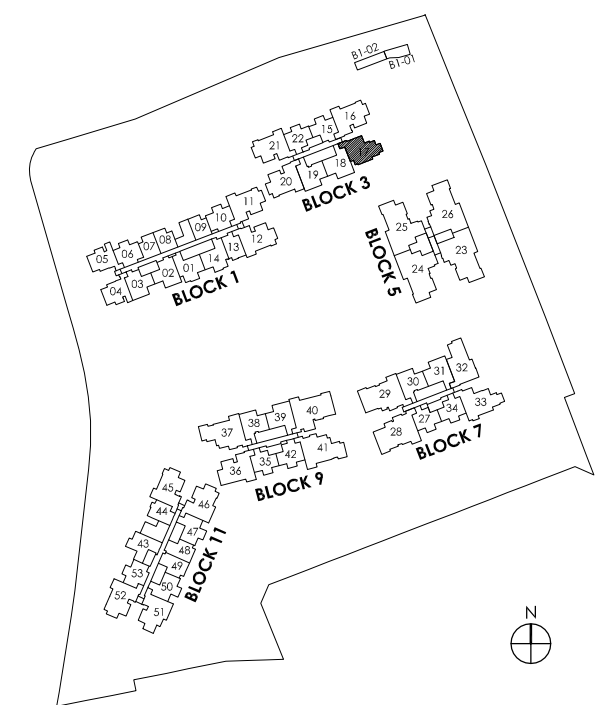
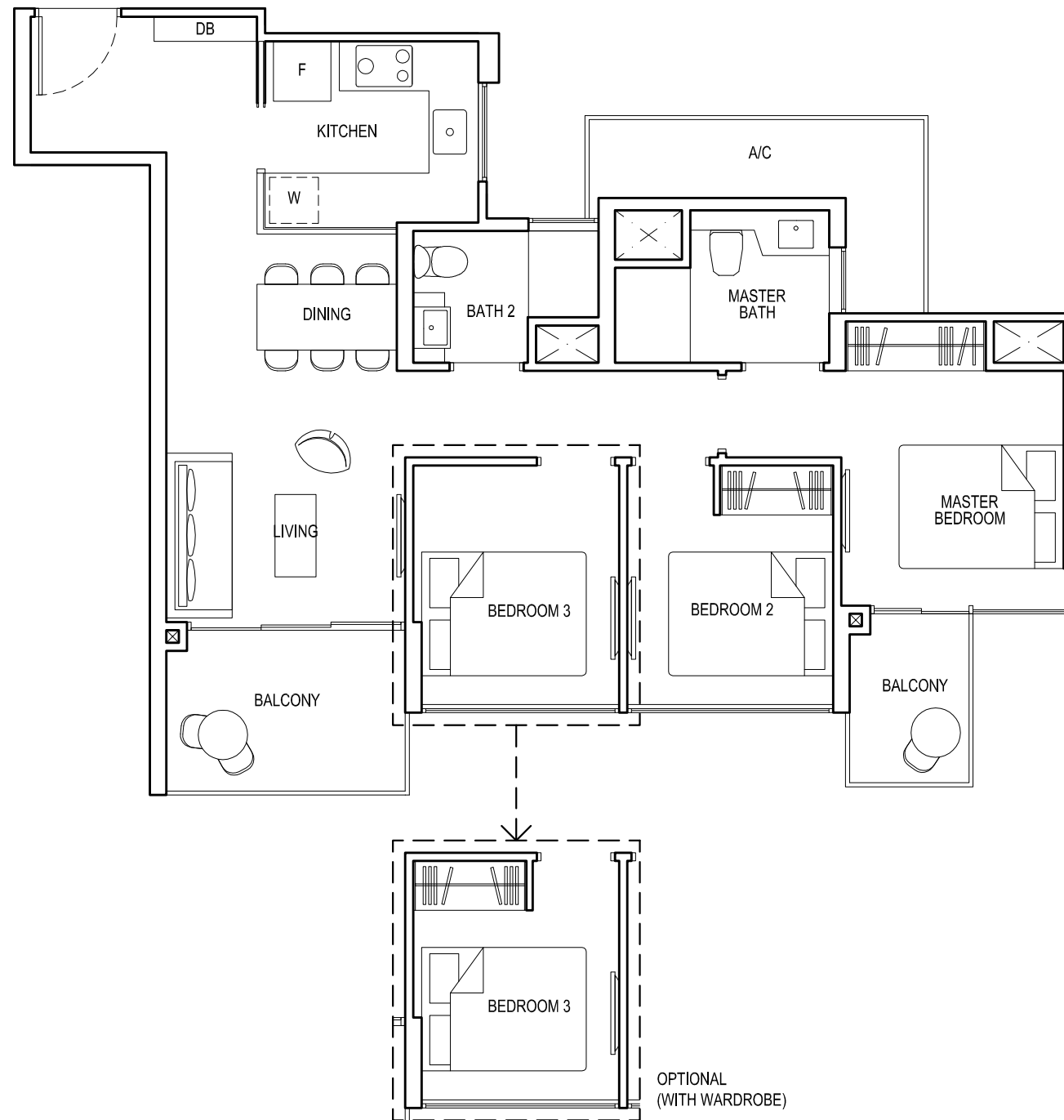


Plans are subject to change/amendments as may be required and/or approved by the Developer and/or the relevant authorities and do not form part of any offer or contract. These are not drawn to scale and are for the purpose of visual presentation only.

# TYPE 3C1f

Area: 83 sq m (include 6 sq m A/C LEDGE, 10 sq m BALCONY)  
Unit(s): #04-17 TO #13-17

# 3 - BEDROOM COMPACT



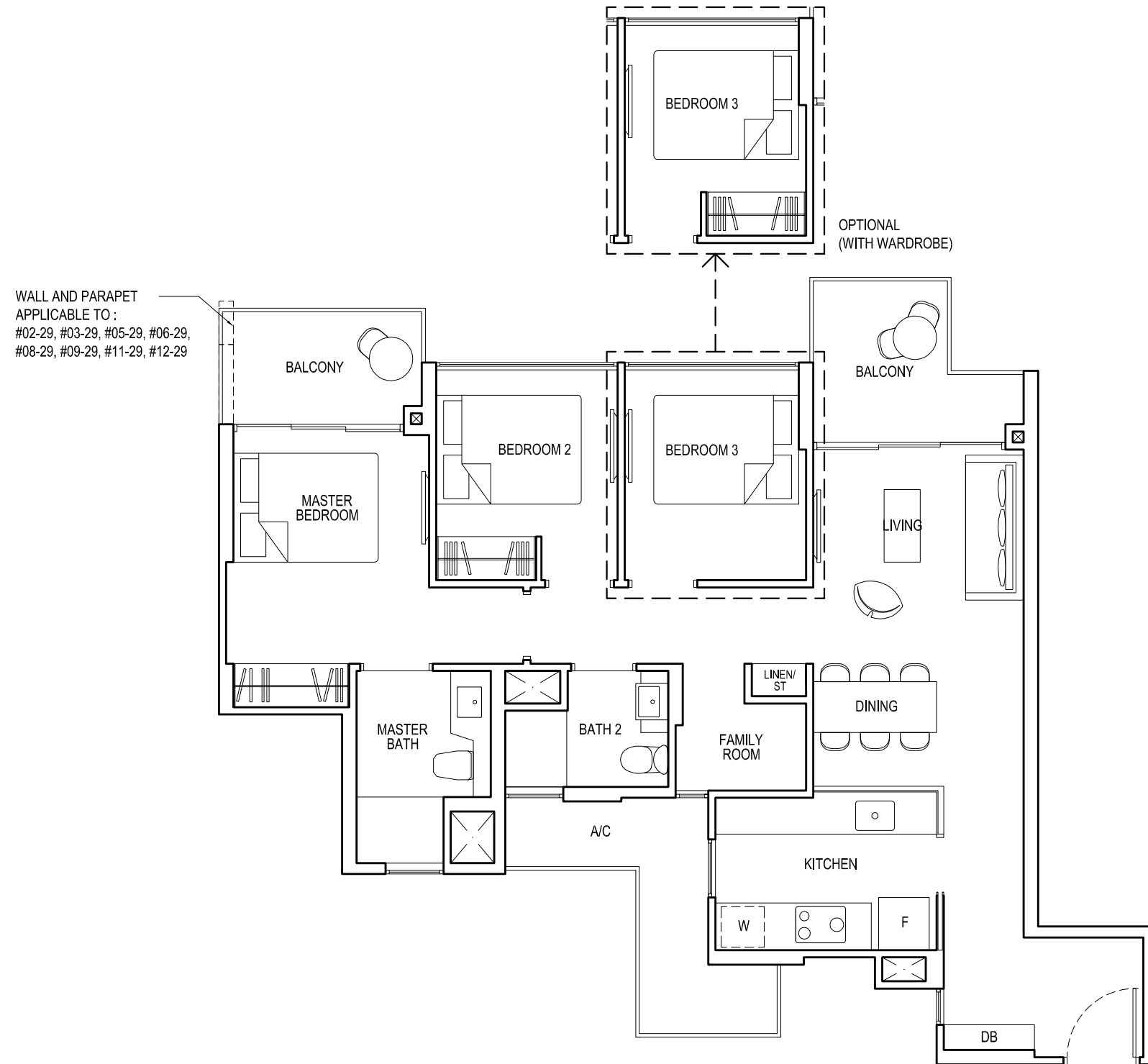
Plans are subject to change/amendments as may be required and/or approved by the Developer and/or the relevant authorities and do not form part of any offer or contract. These are not drawn to scale and are for the purpose of visual presentation only.



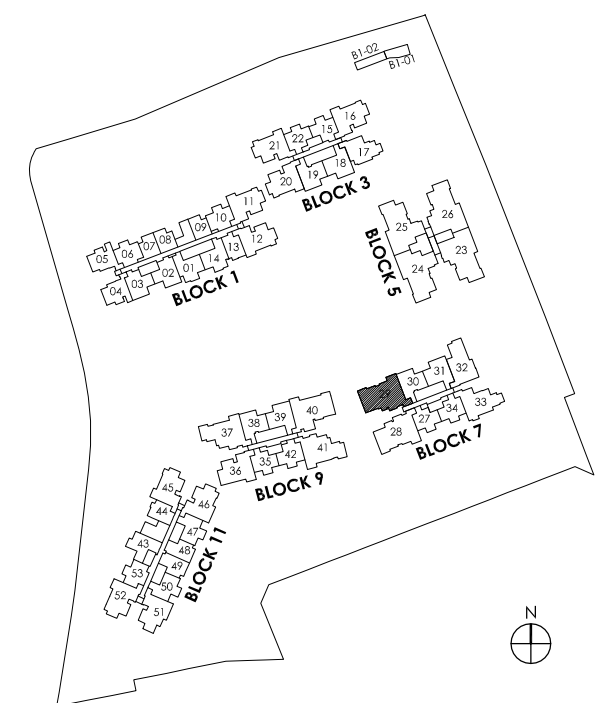
# TYPE 3D1

Area: 91 sq m (include 7 sq m A/C LEDGE, 11 sq m BALCONY)  
Unit(s): #02-29 TO #13-29

# 3 - BEDROOM DELUXE



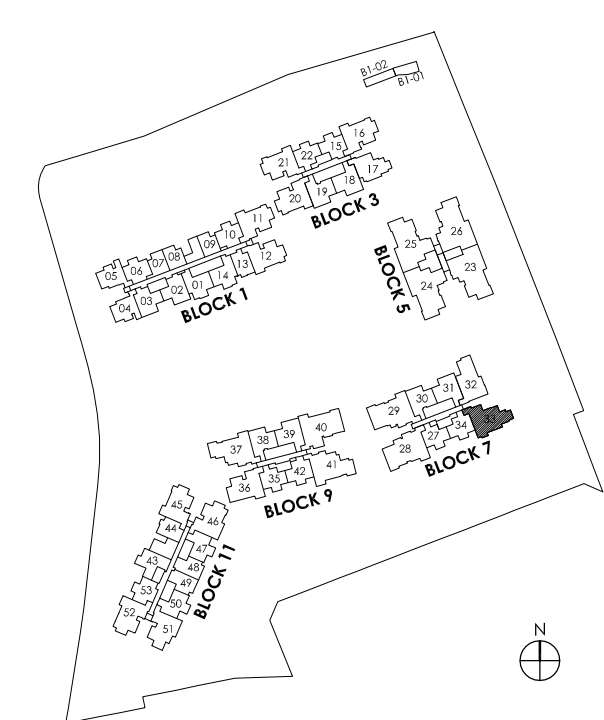
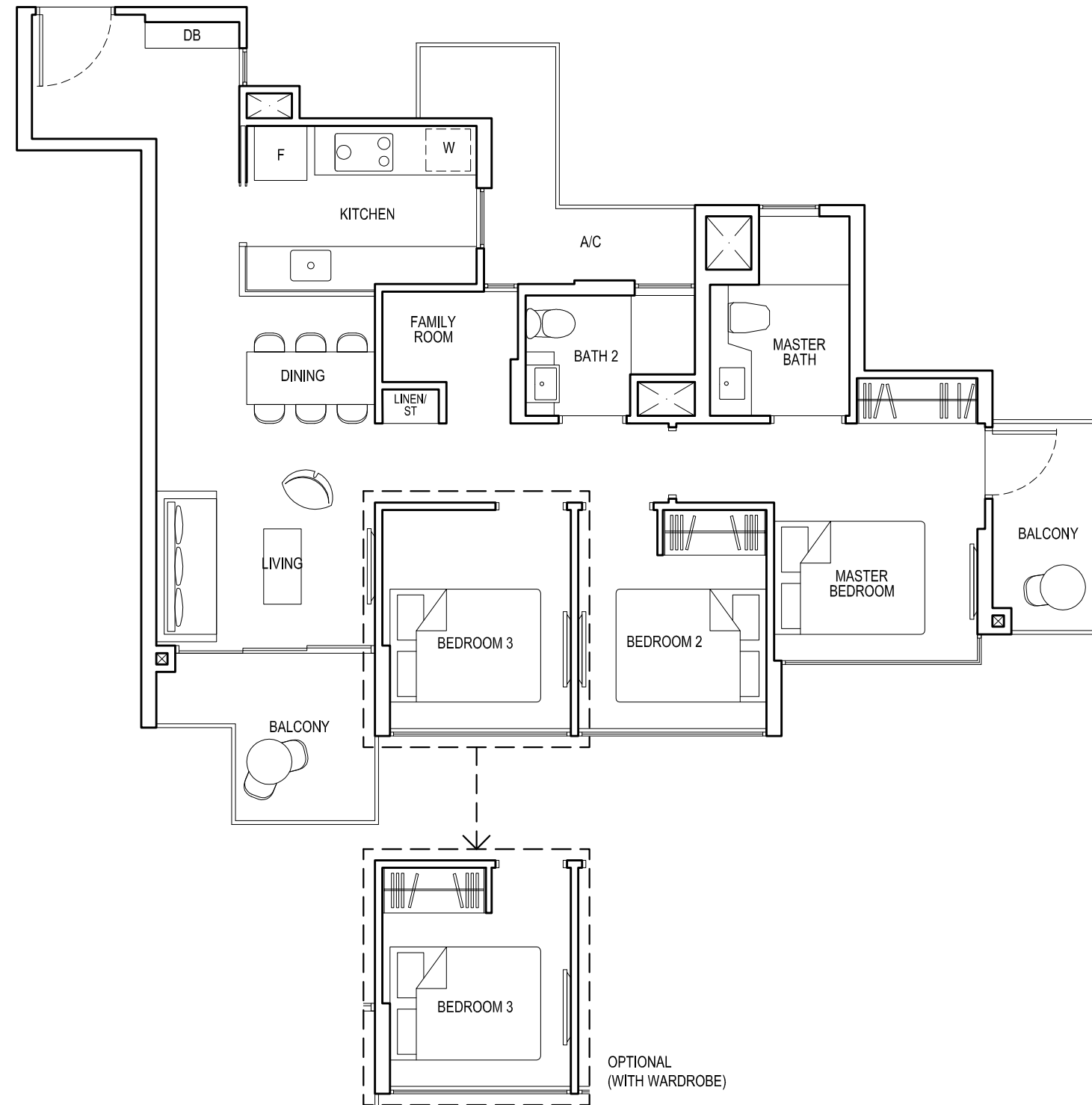
Plans are subject to change/amendments as may be required and/or approved by the Developer and/or the relevant authorities and do not form part of any offer or contract. These are not drawn to scale and are for the purpose of visual presentation only.



# TYPE 3D2

Area: 90 sq m (include 6 sq m A/C LEDGE, 11 sq m BALCONY)  
Unit(s): #02-33 TO #13-33

# 3 - BEDROOM DELUXE



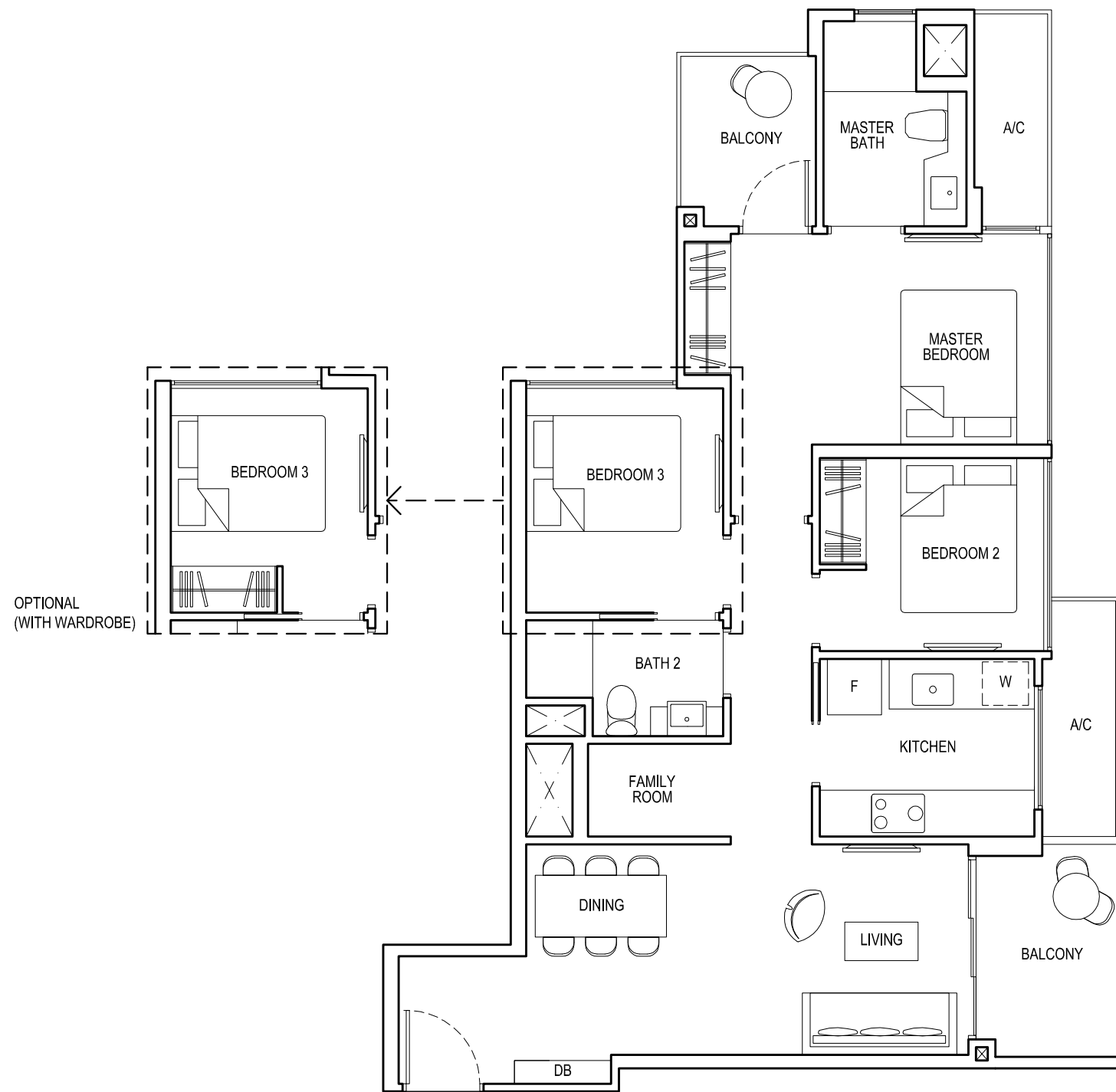
Plans are subject to change/amendments as may be required and/or approved by the Developer and/or the relevant authorities and do not form part of any offer or contract. These are not drawn to scale and are for the purpose of visual presentation only.



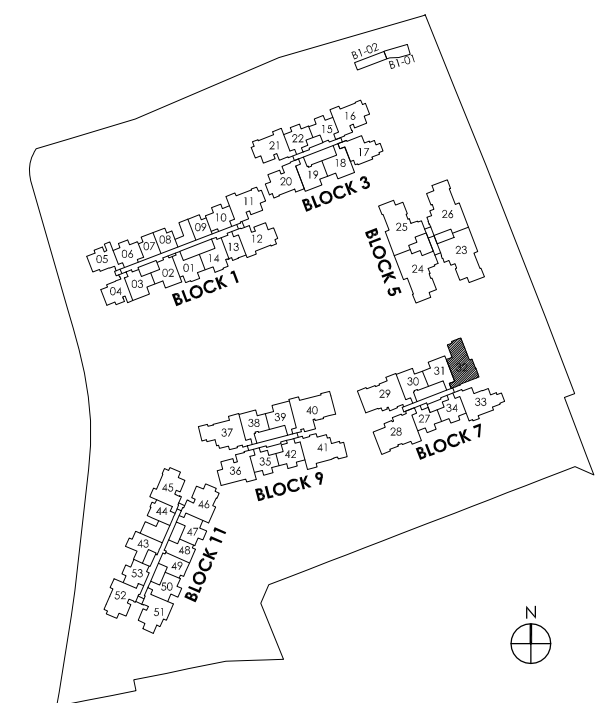
# TYPE 3D2a

Area: 90 sq m (include 6 sq m A/C LEDGE, 10 sq m BALCONY)  
Unit(s): #02-32 TO #13-32

# 3 - BEDROOM DELUXE



Plans are subject to change/amendments as may be required and/or approved by the Developer and/or the relevant authorities and do not form part of any offer or contract. These are not drawn to scale and are for the purpose of visual presentation only.

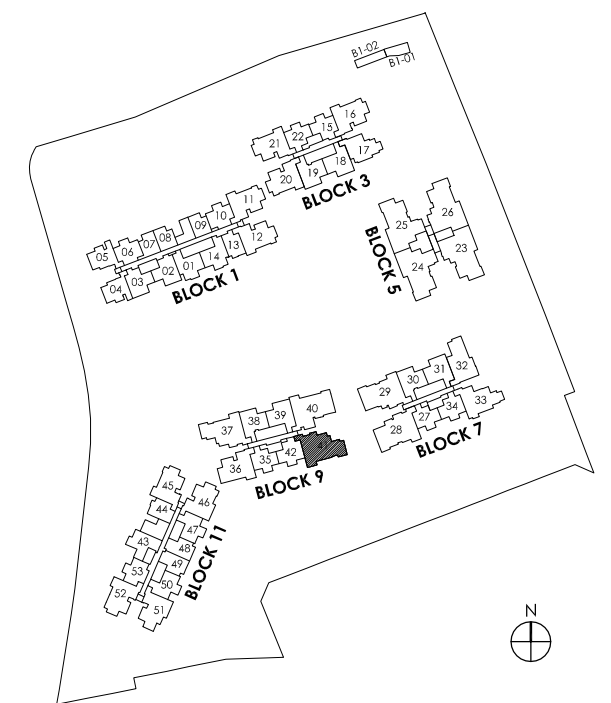
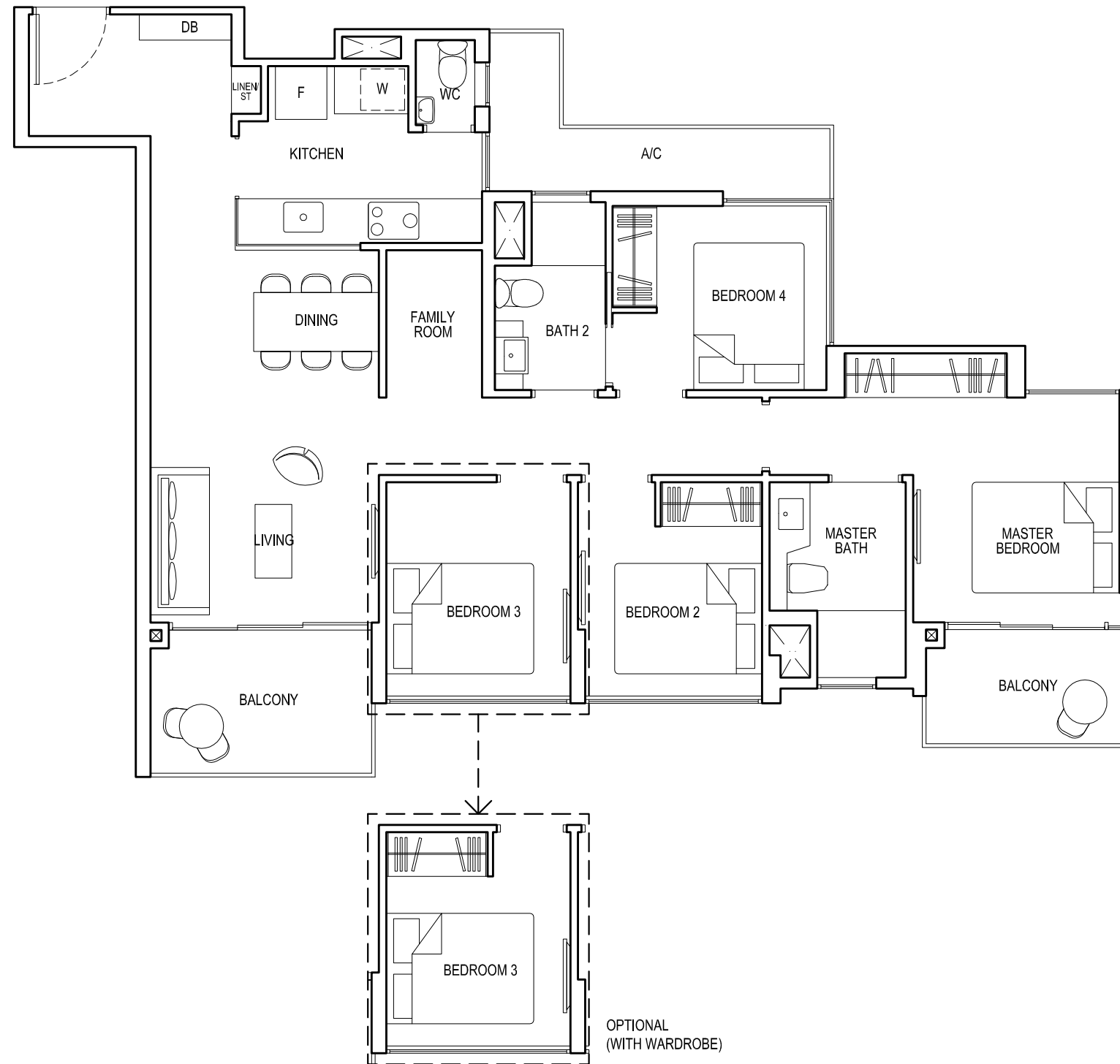


# TYPE 4C1

# 4 - BEDROOM COMPACT

Area: 105 sq m (include 6 sq m A/C LEDGE, 12 sq m BALCONY)

Unit(s): #02-41 TO #14-41

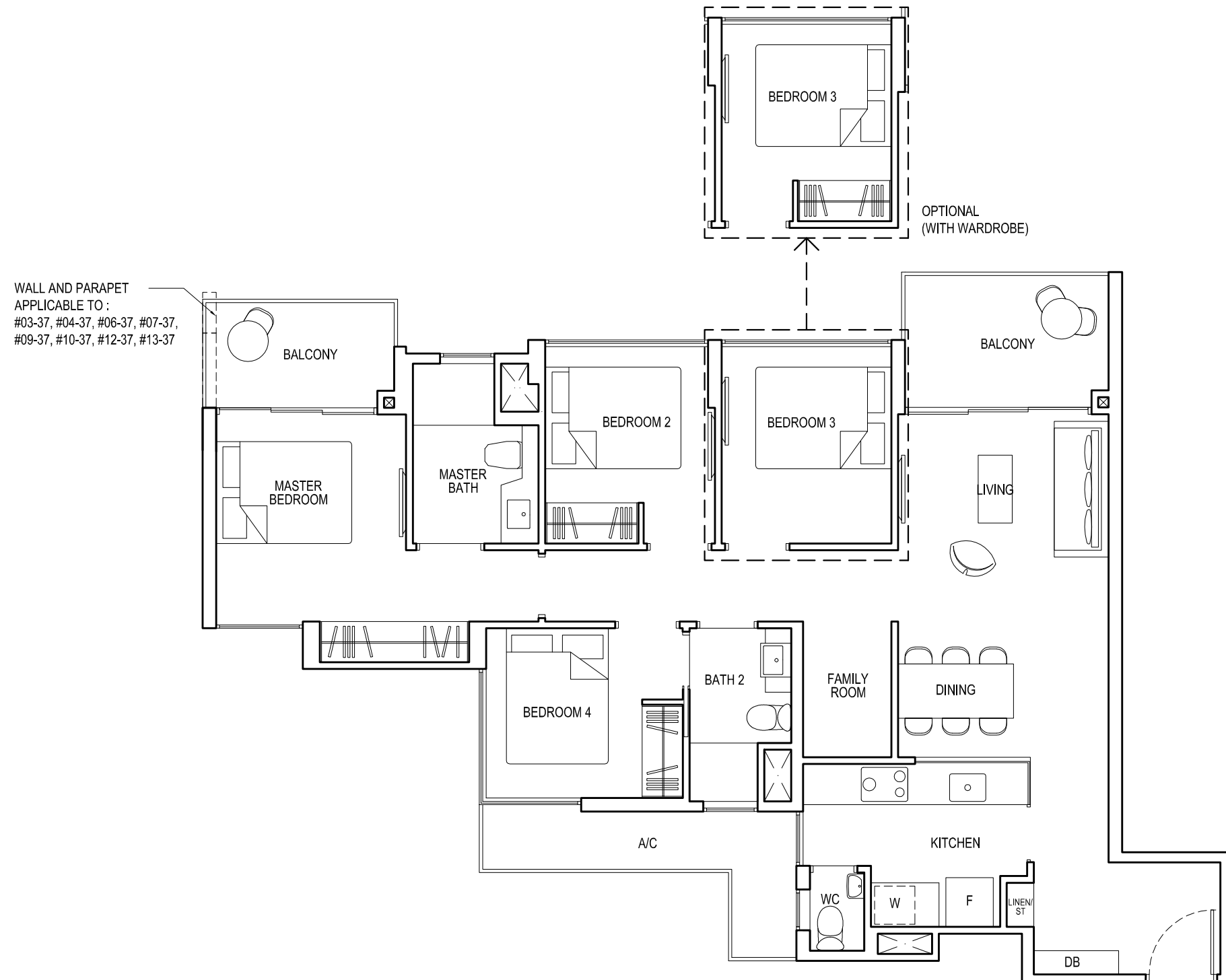


Plans are subject to change/amendments as may be required and/or approved by the Developer and/or the relevant authorities and do not form part of any offer or contract. These are not drawn to scale and are for the purpose of visual presentation only.

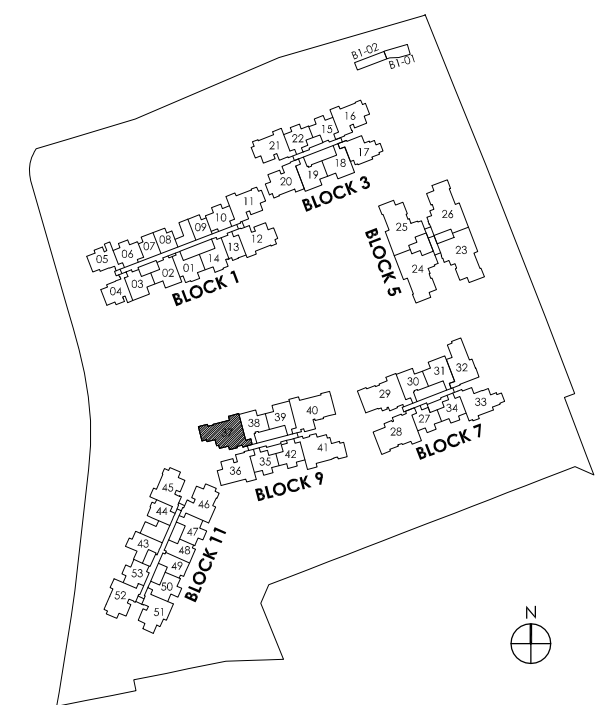
# TYPE 4C1a

Area: 105 sq m (include 6 sq m A/C LEDGE, 12 sq m BALCONY)  
Unit(s): #02-37 TO #14-37

# 4 - BEDROOM COMPACT



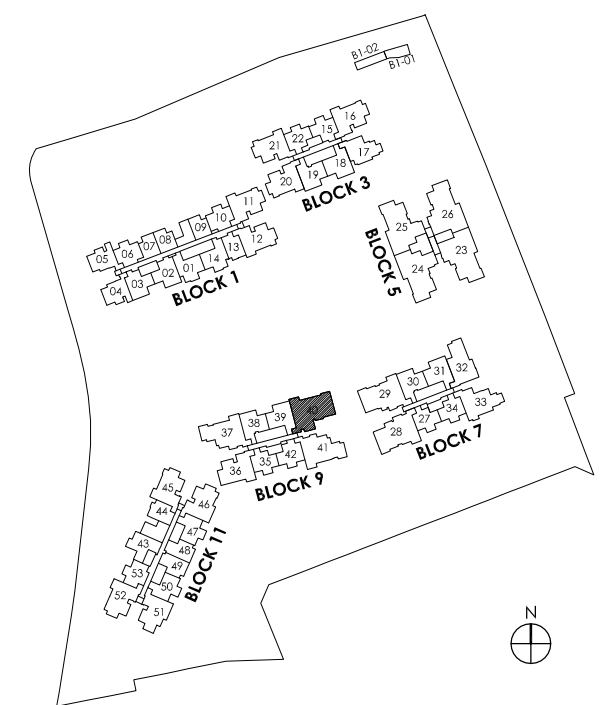
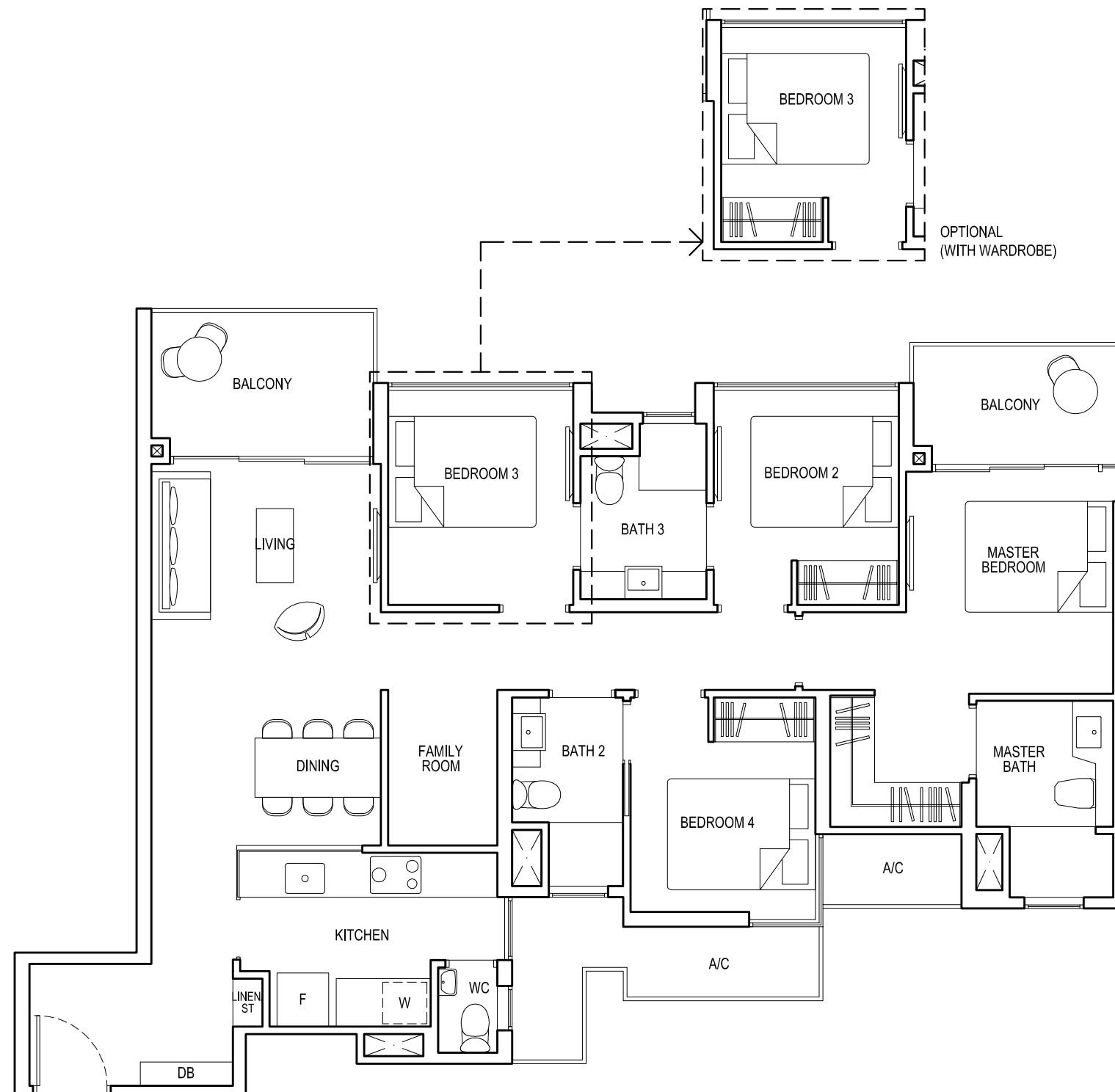
Plans are subject to change/amendments as may be required and/or approved by the Developer and/or the relevant authorities and do not form part of any offer or contract. These are not drawn to scale and are for the purpose of visual presentation only.



# TYPE 4D1

Area: 115 sq m (include 8 sq m A/C LEDGE, 12 sq m BALCONY)  
Unit(s): #02-40 TO #14-40

# 4 - BEDROOM DELUXE

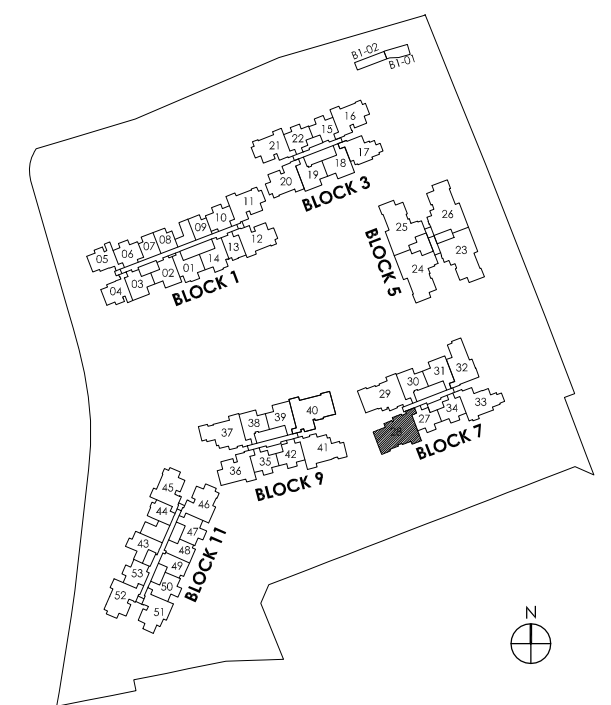


Plans are subject to change/amendments as may be required and/or approved by the Developer and/or the relevant authorities and do not form part of any offer or contract. These are not drawn to scale and are for the purpose of visual presentation only.

# TYPE 4D1a

Area: 115 sq m (include 8 sq m A/C LEDGE, 12 sq m BALCONY)  
 Unit(s): #02-28 TO #13-28

# 4 - BEDROOM DELUXE



Plans are subject to change/amendments as may be required and/or approved by the Developer and/or the relevant authorities and do not form part of any offer or contract. These are not drawn to scale and are for the purpose of visual presentation only.

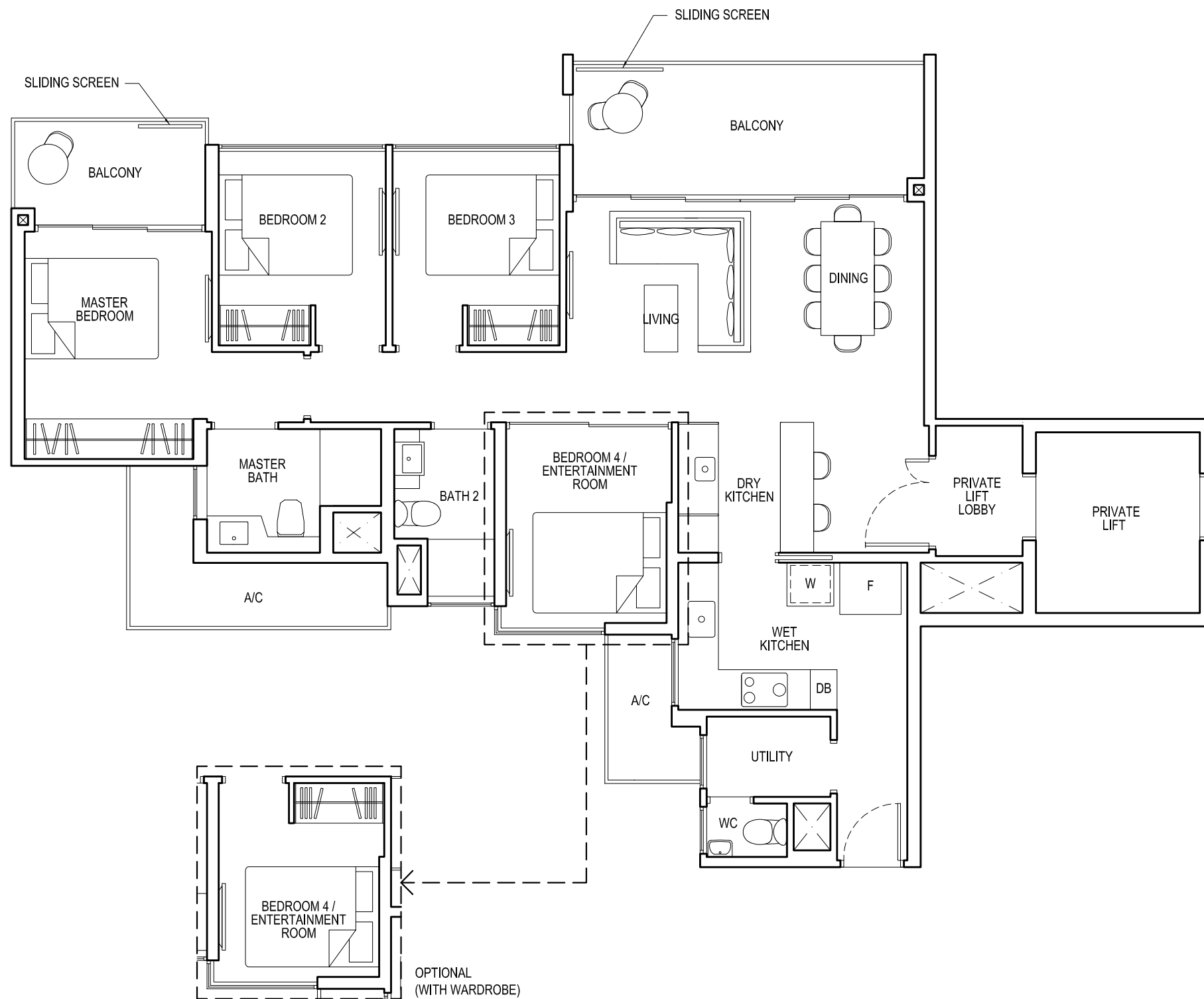
# TYPE 4L

# 4 - BEDROOM PREMIUM

Area: 118 sq m (include 9 sq m A/C LEDGE, 16 sq m BALCONY)

Unit(s): #02-24

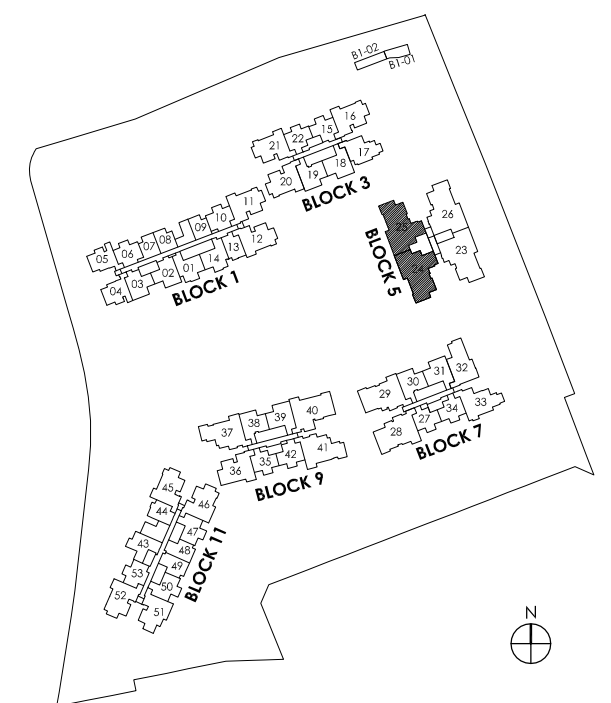
#02-25\*



NOTE:

\* Mirror image

Plans are subject to change/amendments as may be required and/or approved by the Developer and/or the relevant authorities and do not form part of any offer or contract. These are not drawn to scale and are for the purpose of visual presentation only.



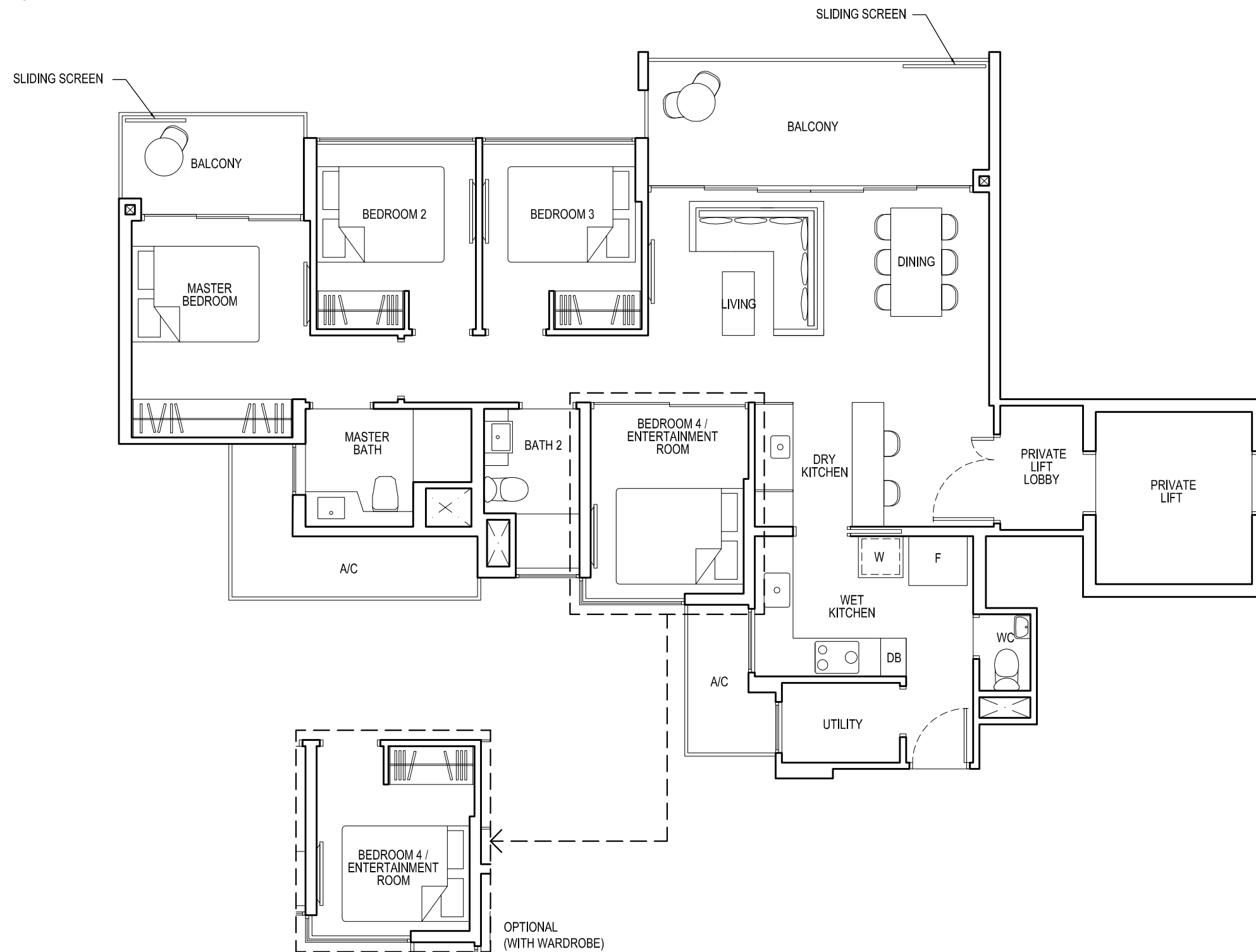
# TYPE 4L1

# 4 - BEDROOM PREMIUM

Area: 117 sq m (include 9 sq m A/C LEDGE, 17 sq m BALCONY)

Unit(s): #02-23\*

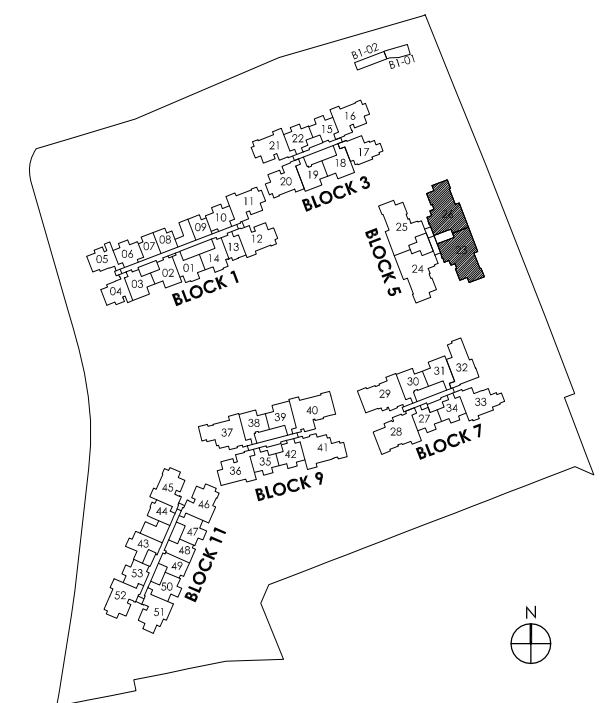
#02-26



NOTE:

\* Mirror image

Plans are subject to change/amendments as may be required and/or approved by the Developer and/or the relevant authorities and do not form part of any offer or contract. These are not drawn to scale and are for the purpose of visual presentation only.



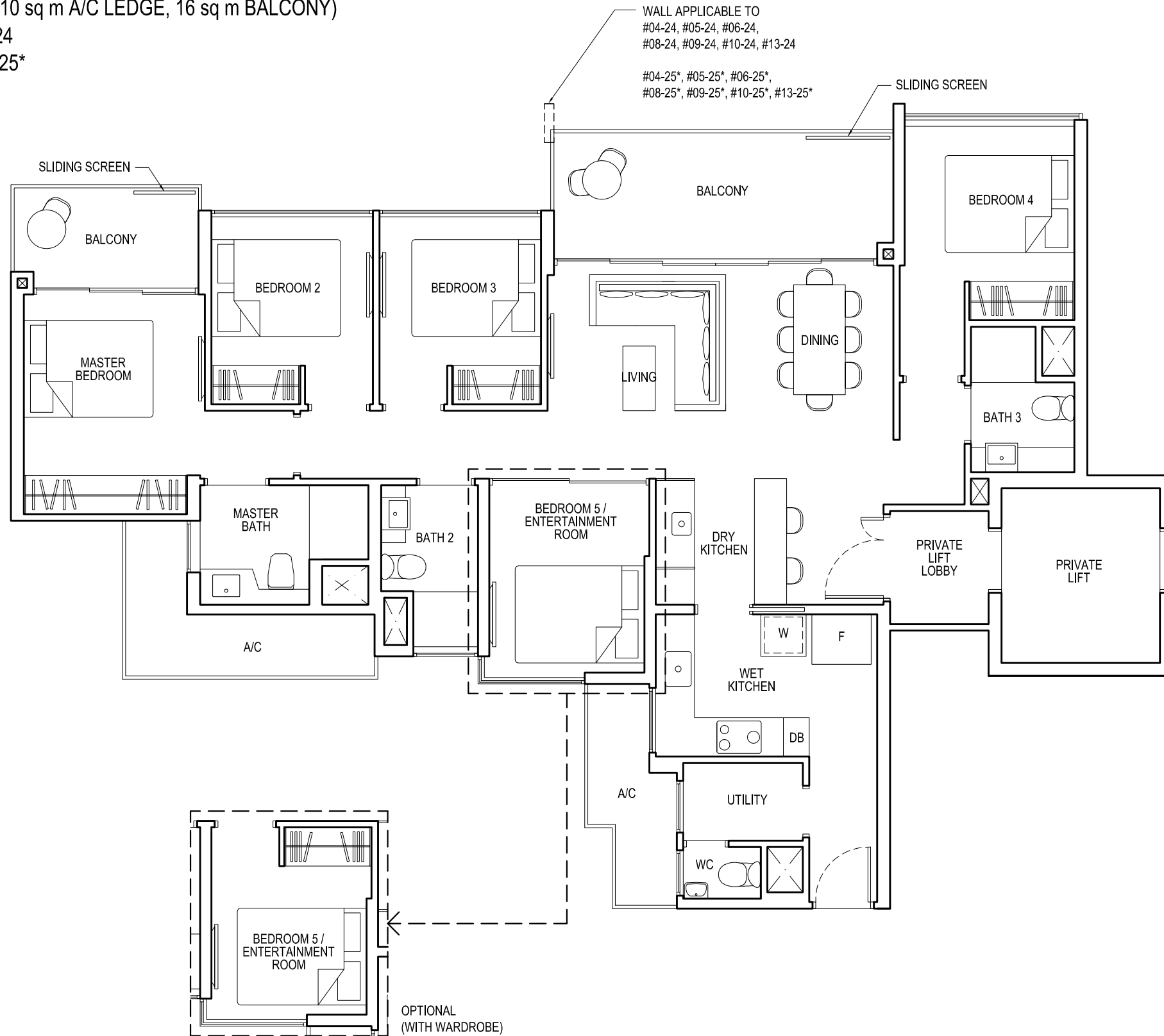
# TYPE 5L

# 5 - BEDROOM PREMIUM

Area: 135 sq m (include 10 sq m A/C LEDGE, 16 sq m BALCONY)

Unit(s): #03-24 TO #13-24

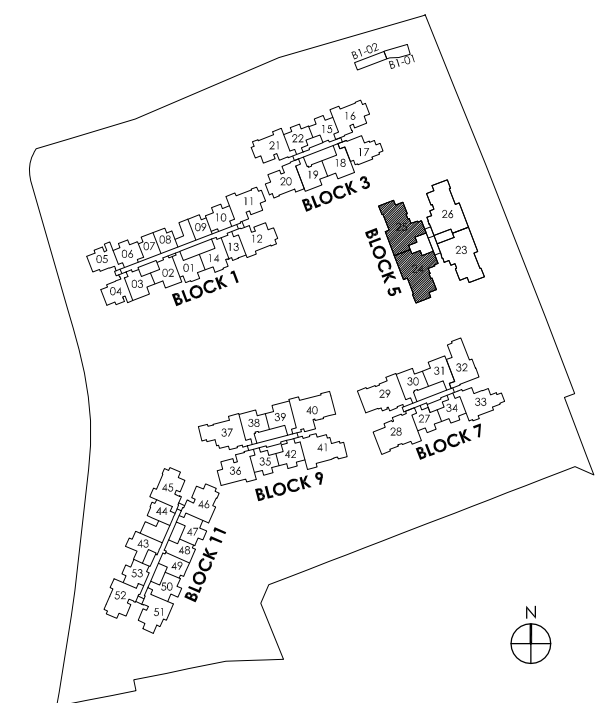
#03-25\* TO #13-25\*



NOTE:

\* Mirror image

Plans are subject to change/amendments as may be required and/or approved by the Developer and/or the relevant authorities and do not form part of any offer or contract. These are not drawn to scale and are for the purpose of visual presentation only.





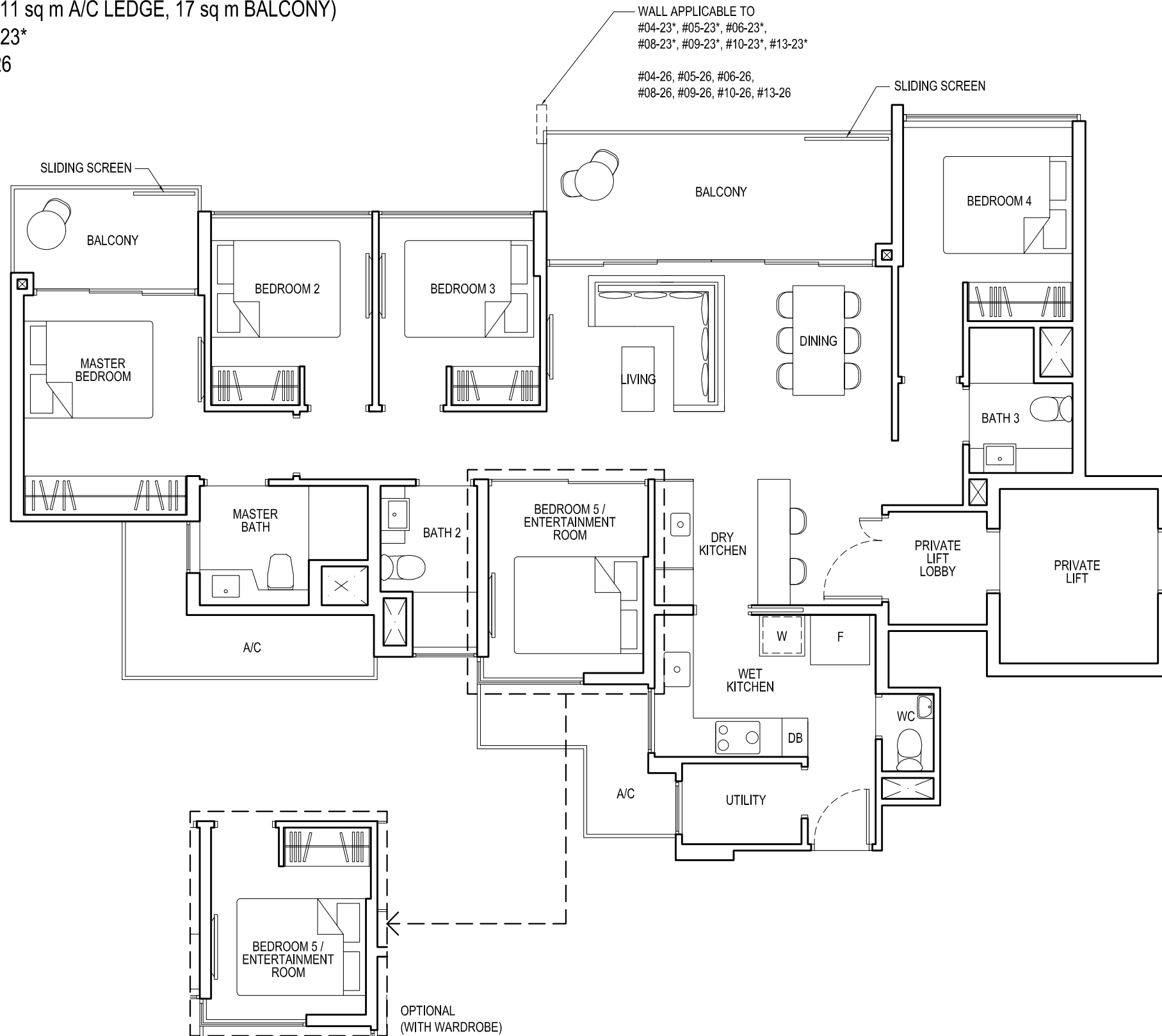
# TYPE 5L1

# 5 - BEDROOM PREMIUM

Area: 135 sq m (include 11 sq m A/C LEDGE, 17 sq m BALCONY)

Unit(s): #03-23\* TO #13-23\*

#03-26 TO #13-26



NOTE:

\* Mirror image

Plans are subject to change/amendments as may be required and/or approved by the Developer and/or the relevant authorities and do not form part of any offer or contract. These are not drawn to scale and are for the purpose of visual presentation only.

